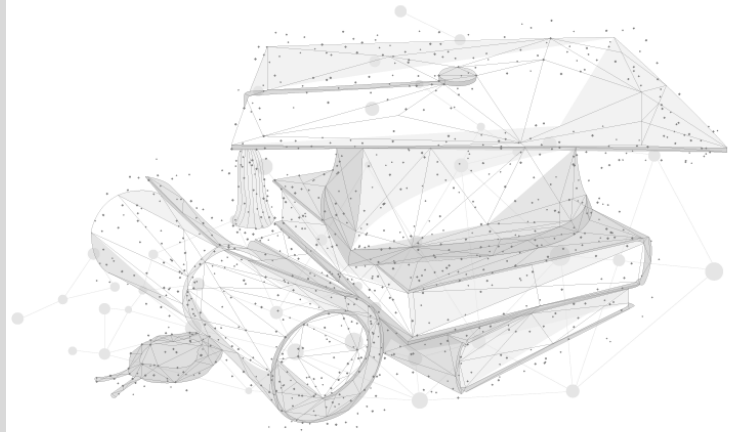





Area of Research

Learning Sciences and Assessment



 Research Domains	 Scope of Research	 Faculty Members (Potential Supervisors)
Assessment	Assessment for Learning Assessment for Learning, Assessment Literacy, Assessment Practices, Feedback Practices, Student-Involved Assessment, Student Self-Assessment, Baseline Research, Teacher PD	Assoc Prof Tan Heng Kiat Kelvin Dr Wong Hwei Ming
Artificial Intelligence	Pedagogical and learning design, Generative AI for education AI in Education Educational data science/machine learning Big data Learning companions, Pedagogical agents Intelligent tutoring systems, Multimodal learning analytics, Generative AI for education, AI literacy, Data literacy Machine learning, Educational data mining, Human-Computer Interaction, AI-enabled metacognitive support AI-Mediated Learning and AI-Augmented Intervention, Educational Data Mining and Data Science, Machine Learning and Analytics in Education, AI and Data Literacy Human-AI augmented problem solving	Assoc Prof Tan Seng Chee Asst Prof Farhan Ali Asst Prof Tanmay Sinha Asst Prof Lee Vwen Yen Alwyn Dr Khor Ean Teng Dr David Junsong Huang

 Research Domains	 Scope of Research	 Faculty Members (Potential Supervisors)
Learning Sciences	<p>Knowledge Building, computer-supported collaborative learning</p> <p>Learner-centered Processes and Cognition, Human computer Interaction and collaboration, Instructional Innovation and Pedagogical Practices, Emerging Technology-enabled Learning</p> <p>Transfer of learning, Design-Based Research</p> <p>Learning analytics, Learning dashboards, Design-based research, Computer-supported collaborative learning, Mixed methods</p>	<p>Assoc Prof Tan Seng Chee Asst Prof Lee Vwen Yen Alwyn</p> <p>Dr Khor Ean Teng</p> <p>Dr David Junsong Huang</p> <p>Dr Elizabeth Koh</p>
Science of learning	<p>Neuroscience/Neurophysiology (EEG/fNIRS) Affect (emotions) and learning</p> <p>Neuroscience, Technology and Learning Educational Neuroscience</p> <p>Brain and Body (Physiological) Signals, Emotions and Learning, Affect-Based Human Computer Interaction; Educational Neuroscience; Neural Engineering; Machine Learning</p>	<p>Asst Prof Farhan Ali</p> <p>Asst Prof Azilawati Jamaludin</p> <p>Dr. Yuvaraj Rajamanickam</p>
Teacher PD	<p>Teacher PD and professionalism</p>	<p>Prof Hung Wei Loong David</p>
Technology-enhanced language learning Technology-mediated learning	<p>Computer-supported collaborative language learning Augmented Reality-supported language learning</p> <p>Teacher professional development Instructional Design</p> <p>Designing for technology-mediated learning Augmenting technology-mediated learning</p> <p>Instructional technologies, Teacher professional learning, mobile learning, personal learning devices</p>	<p>Assoc Prof Wen Yun</p> <p>Assoc Prof Choy Doris</p> <p>Assoc Prof Shanti Divaharan</p> <p>Assoc Prof Tan Seng Chee</p>

 Research Domains	 Scope of Research	 Faculty Members (Potential Supervisors)
Technology-mediated learning	ICT integration for teaching and learning AI for education Human-AI collaboration, reliance on AI STEM learning environments Interdisciplinary learning Collaborative inquiry Scaffolding Self-directed learning, Informal learning, Curiosity and Interest in digital environments	Prof Chen Wenli Asst Prof Zhu Gaoxia Asst Prof Farhan Ali
21st Century Teaching and Learning	Self-directed learning, self-regulated learning	Assoc Prof Tan Seng Chee
21st century competencies	Self-directed learning, Social-emotional awareness, Metacognition	Asst Prof Lee Vwen Yen Alwyn