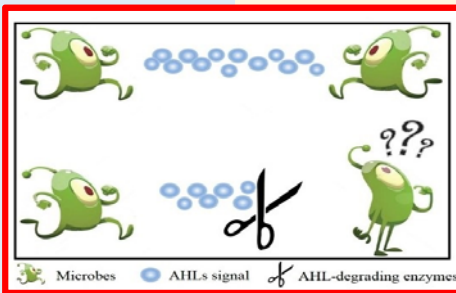


Membrane Fouling Control in MBR Based on Quorum Quenching (QQ)

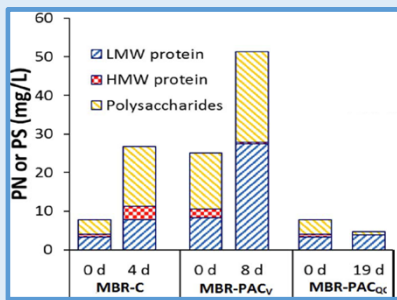
Research members

Zhou Yan (Asst Professor); Liu Jianbo (Ph.D student); Sun Faqian (Ph.D)

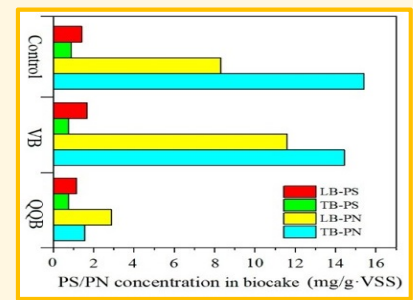
Graphic abstract



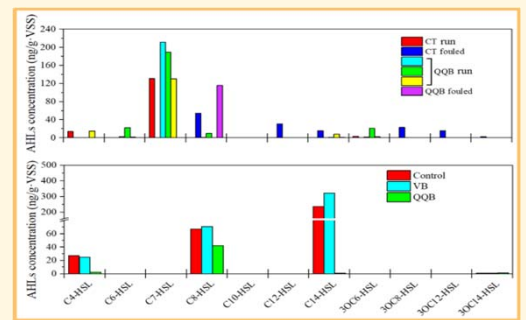
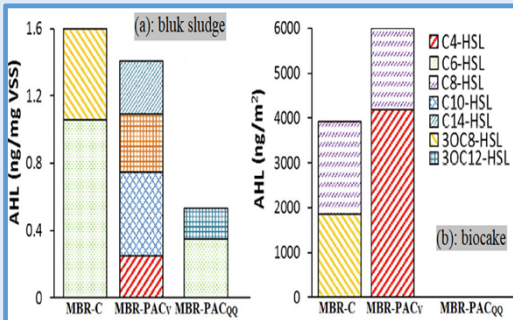
Aerobic MBR



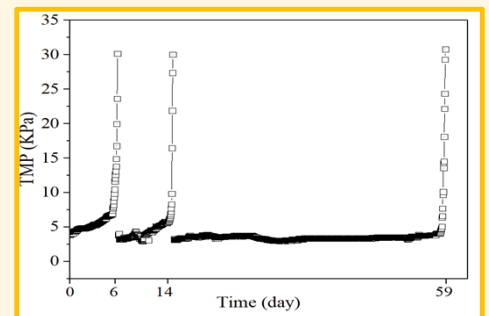
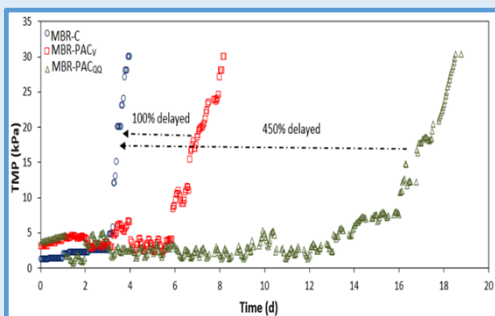
Anaerobic MBR



The EPS contents in biocake decreased with the presence of QQ bacteria in AeMBR and AnMBR.



AHL concentration in biocake declined in QQ reactor compared to control reactors



With QQ addition, operation time of AeMBR and AnMBR can be prolonged by about 4.5 and 8 times, respectively.