



# Jakarta Flood Loss Curve Development

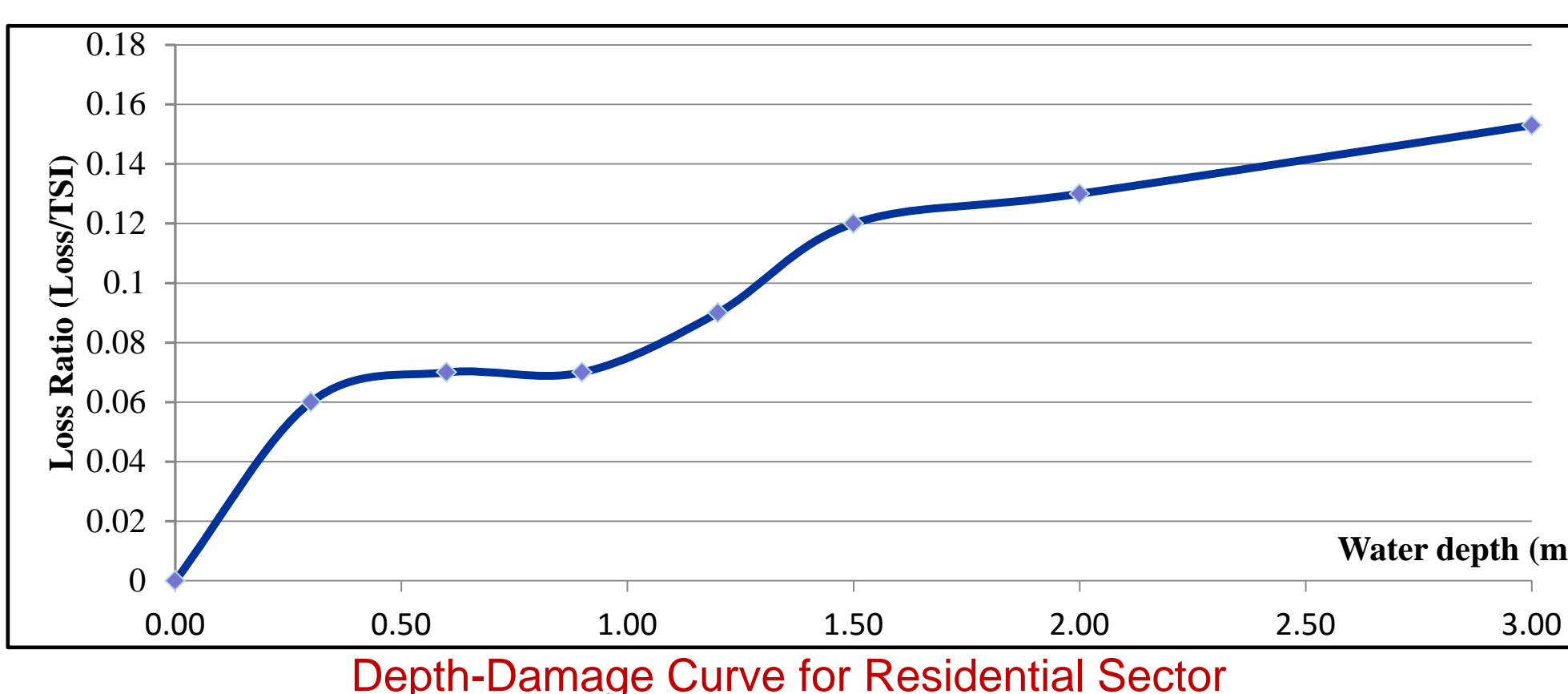
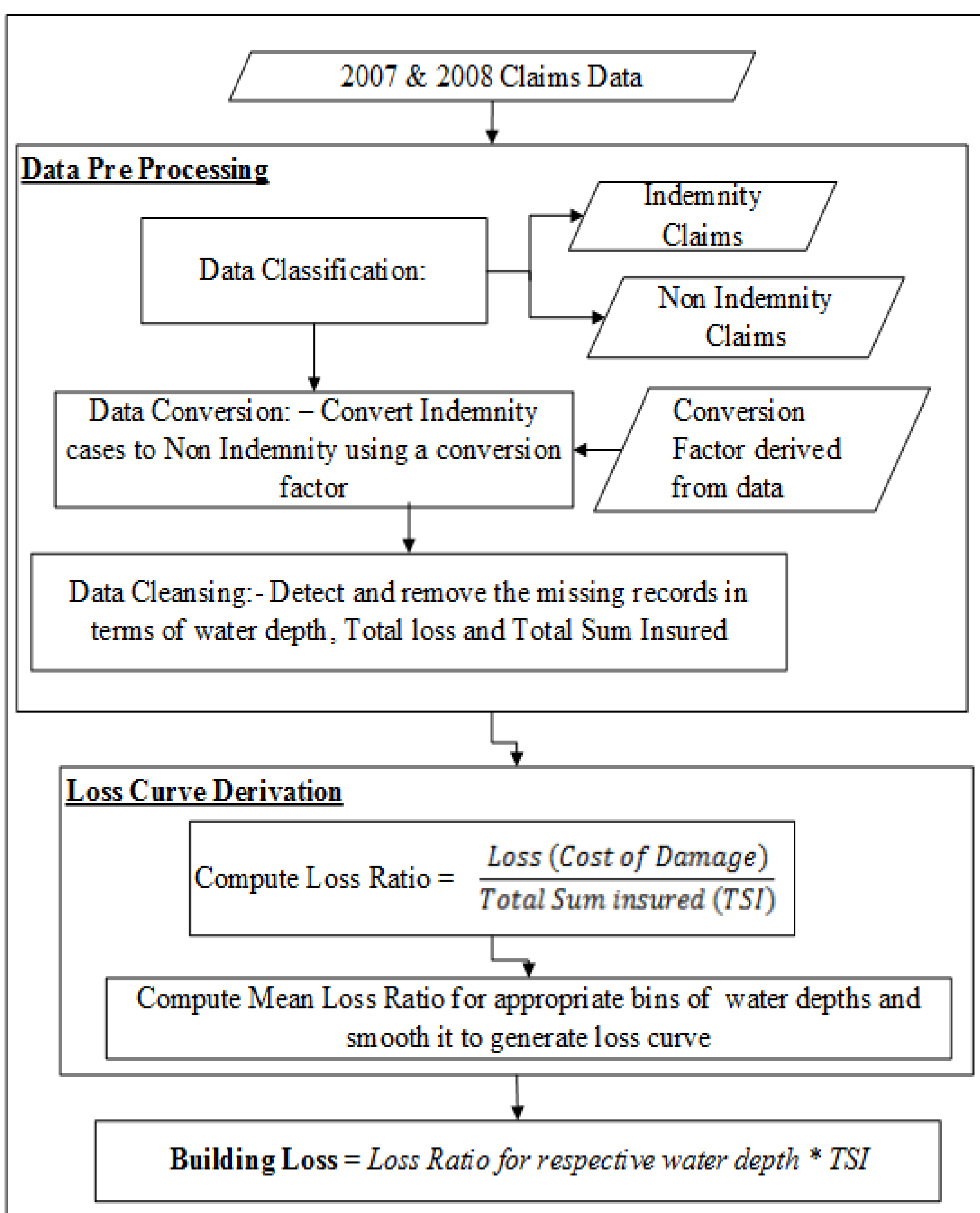
Depth damage curves, which forms the central idea behind flood loss estimation, are an important component for risk oriented flood design, financial appraisal and comparative risk analysis.

The objective of the poster is to showcase the development of residential and commercial depth – damage curves for estimating which losses to buildings and contents applicable for Jakarta.

## • Development of Residential Depth-Damage Curve

Claims data from the 2007 and 2008 flood events as provided by insurance companies have been used for the development of the residential loss functions.

### Methodology:

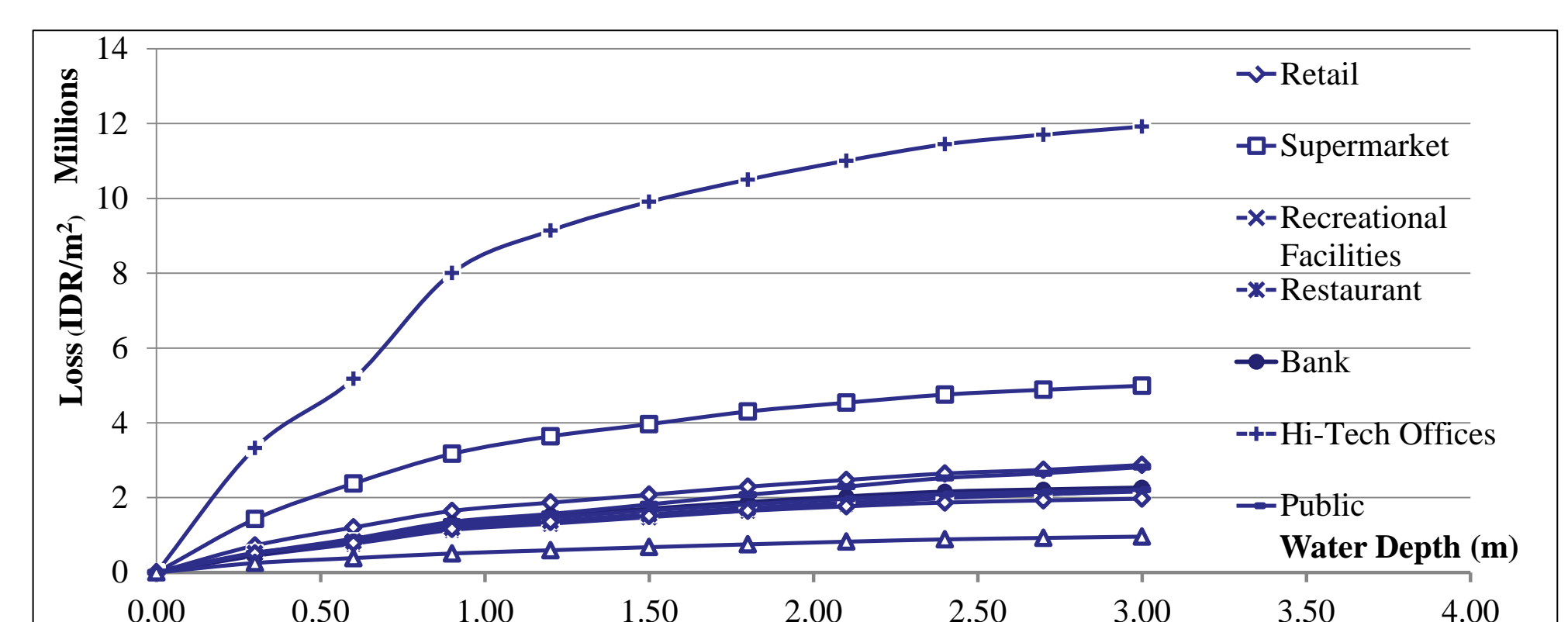
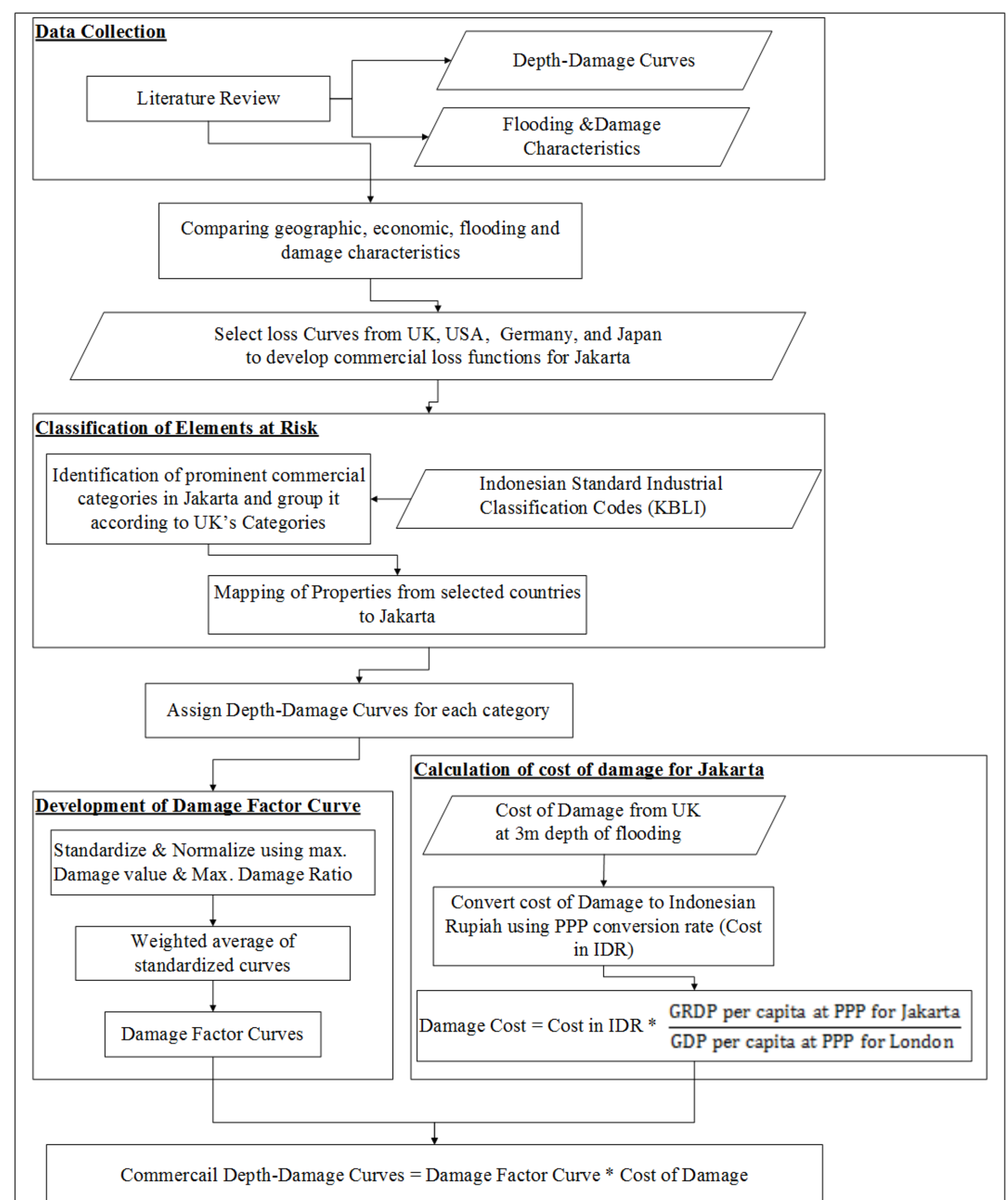


Depth-Damage Curve for Residential Sector

## • Development of Commercial Depth-Damage Curves

The depth-damage curves from UK, USA, Japan and Germany are adapted to represent the loss function for commercial properties in Jakarta.

### Methodology:



Depth-Damage Curve for Commercial Sector

### Contact Us:

Executive Director, ICRM ([ExecDir-ICRM@ntu.edu.sg](mailto:ExecDir-ICRM@ntu.edu.sg))

N1-B1b-07, 50 Nanyang Avenue, Singapore 639798

Tel: +65 6592 1866