

EAAERE 2017

Singapore



*The 7th Congress of the East Asian Association of
Environmental and Resource Economics*

*“Environmental and Sustainable
Development:
Issues, Challenges, and Solutions”*

5-7 August 2017

Mandarin Orchard Hotel, Singapore

Co-hosted by

Economic Growth Centre (EGC), Nanyang Technological University
Association of East Asian Association of Environmental and Resource Economics
College of Social Science, National Taipei University
Taipei Law & Business Economic Academic Education Foundation
Department of Economics, National Taipei University



Contents

GREETING FROM THE PRESIDENT OF EAAERE	3
ORGANIZATION	4
COMMITTEES	5
MAPS AND GENERAL INFORMATION	6
SCHEDULE AT A GLANCE	12
KEYNOTE SPEAKERS	13
DISTINGUISHED SPEAKERS	15
INSTRUCTIONS FOR CONGRESS PARTICIPANTS	16
CONGRESS PROGRAM	18
PARTICIPANT LIST	29

GREETING FROM THE PRESIDENT OF EAAERE

Dear Guests and Speakers,

It is my great honor and pleasure to welcome you all to the 7th Annual Congress of the East Asian Association of Environmental and Resource Economics (EAAERE) held in Nanyang Technological University, Singapore.

First, I would like to express my sincere gratitude to those who make this Congress feasible and successful. Particularly, I appreciate the Chair of Local Organizing Committee (LOC), Professor Euston Quah; the Chair of Scientific Committee, Professor Jong Ho Hong; the Chair of Program Committee, Professor Orapan Nabangchang; and all members of these committees; for their extraordinary services. In addition, I like to thank the Dean of the Social Science College of National Taipei University, Professor Min-Chieh Tseng; and the President of Taipei Law and Business Economic Academic Education Foundation, Mr. William Lu; for their fundraising and donation (total around USD 10,000) to support this Congress. I like to thank Professors Robert Stavin, Yew-Kwang Ng, and Parkash Chander too for assuming the responsibilities of keynote speakers. Finally, I like to acknowledge all participants of this Congress. Without you, our efforts would become meaningless.

Among the 193 submissions of this year, there are 132 papers are selected for presentation in the Congress period. The increasing numbers of submitted papers to our congress in the past seven years indicate the fast growth of the EAAERE. We will co-host WCERE 2018 in Sweden with the Association of Environmental and Resource Economists (AERE) and the European Association of Environmental and Resource Economists (EAERE). This is the first important step for the EAAERE to join and to unify with other international academic associations. I sincerely hope that many of us will meet in Sweden, and let us work together to make the EAAERE more famous international association.

Global warming has brought us much hotter weather and larger scales of flooding around the world in this summer. According to the recent report of the IPCC, Asia will become the most seriously devastated area by global warming. Thus, the main theme of the 7th Congress of the EAAERE is “Environment and Sustainable Development: Issues, Challenges, and Solutions.” As economists focusing on environmental and resource issues, we are racing with time to find out possible solutions for problems caused by global warming, and to make countries’ sustainable development possible. Thus, the EAAERE Congress is an important place to carry out our missions since many relevant issues and policies are discussed here. I hope that we will obtain fruitful results during this congress. Moreover, I hope all of you are having a comfortable stay and enjoying the lovely city of Singapore.

Hsiao-Chi Chen
President of the EAAERE
August 2017

ORGANIZATION

President

Hsiao-Chi CHEN, National Taipei University

Vice-Presidents

Jong Ho HONG, Seoul National University

Shiqiu ZHANG, Peking University

Secretary General

Akihisa MORI, Kyoto University

Vice-Secretary General

Katsuya TANAKA, Shiga University

Directors

Young Sook EOM, Chonbuk National University

Chazhong GE, Chinese Academy for Environmental Planning

Jin-Li HU, National Chiao Tung University

Geum Soo KIM, Hoseo University

Hsing-Chun LIN, National Chiayi University

Orapan NABANGCHANG, Sukhothai Thammatirat Open University

Ayumi ONUMA, Keio University

Budy RESUSODARMO, Australian National University

Jian WU, Renmin University of China

Arief YUSUF, Padjadjaran University

Auditor

Yu MATSUNO, Meiji University

Treasurer

Jun-Li HU, National Chiao Tung University

COMMITTEES

Scientific Committee

Jong Ho HONG, Seoul National University (Chair)
Shiqiu ZHANG, Peking University
Hsing-Chun LIN, National Chiayi University
Katsuya TANAKA, Shiga University
Budy RESOSUDARMO, Australian National University

Program Committee

Orapan NABANGCHANG, Sukhothai Thammatirat Open University (Chair)
Euston QUAH, Nanyang Technological University (Co-Chair)
Ken-ichi AKAO, Waseda University
Young Sook EOM, Chon Buk National University
Fuhai HONG, Nanyang Technological University
Soocheol LEE, Meijo University
Ayumi ONUMA, Keio University
Budy RESOSUDARMO, Australian National University
Daigee SHAW, Academia Sinica
Shiqiu ZHANG, Peking University
Rintaro YAMAGUCHI, Kyushu University
Shigeru MATSUMOTO, Aoyoma Gakuin University

Local Organizing Committee

Euston QUAH, Nanyang Technological University (Chair)
Youngho CHANG, Singapore University of Social Sciences
Jiankun Lucas LU, Zhejiang University
Youjin Cecilia KIM, Nanyang Technological University (Secretariat)

MAPS AND GENERAL INFORMATION

Meeting Location & Contact Information

Mandarin Orchard Hotel

333 Orchard Road, Singapore 238867

T: (65) 6737 4411

F: (65) 6732 2361

E: orchard@meritushotels.com

Mandarin Orchard Singapore is easily accessible. The nearest MRT station is *Somerset*. The hotel is accessible via hotel limousines, taxis, airport shuttle buses, trains and public buses from and to the Airport.

By Taxi

Metered taxis to the hotel are readily available at the Arrival Halls of Singapore Changi Airport. Travelling time from the Airport to the hotel is around 30 minutes. Taxi fare from the Airport is approximately \$25.00 by meter.

By MRT

Train services are available at the Airport train station located at Terminal 2 and Terminal 3. Transfer to the westbound train at *Tanah Merah* train station to alight at *Somerset* train station. The hotel is a 5-minute walk from the station. MRT fare is \$2.00 per person. More information can be found at: <http://www.smrt.com.sg/Trains/NetworkMap.aspx>



Electricity and Plug

Electricity in Singapore is 230 Volts, alternating at 50 cycles per second. If you travel to Singapore with a device that does not accept 230 Volts at 50 Hertz, you will need a voltage converter. Outlets in Singapore generally accept one type of plug, having two parallel flat pins with ground pin. If your appliances plug has a different shape, you may need a plug adapter.

Singapore plug adapters: the grounded plug adapter WA-7 and the ungrounded plug adapter #5. These are the recommended wall outlet plug adapters for Singapore.

Useful Contact Information

Emergency

Police	999	Flight Info	800 542 4422
Fire Brigade	995	Tourist Hotline	800 736 2000
Ambulance	995	Directory	100

Dial a Cab

Taxi	(65) 6600 2800	TIBS & SMRT	(65) 6555 8888
Comfort & City	(65) 6552 1111	Premier	(65) 6363 6888
Trans-Cab	(65) 6555 3333	SMART	(65) 6485 7777

Credit Cards

AMEX	1800 295 0500	Diners Club	6416 0900
JCB	(65) 6734 0096	Visa	800 448 1250
Master	800 110 0113		

Registration

5 August 2017 (Saturday) 06.00 pm – 07.00 pm at Grange Ballroom at Level 5, Main Tower

6 – 7 August 2017 (Sunday - Monday) 08.00 am – 17.00 pm at Mandarin Grand Ballroom at Level 6, Main Tower

All participants are expected to register and collect their conference package prior to attending the conference.

Name Badges

A name tag will be provided upon registration and will serve as the official pass to sessions, coffee breaks, lunches and other official functions. For security and administrative purpose, please wear your name badges in conference functions and social events.

Welcome Reception

Date 5 August 2017 (Saturday)

Time 7.00 pm – 9.00 pm

Venue Mandarin Orchard Hotel, Grange Ballroom at Level 5, Main Tower

Daily Tea Break & Lunch Buffet

Morning tea on 6-7 August 2017 will be served at Mandarin Grand Ballrooms II and III, Main Tower.

Afternoon tea will be served at the common area outside the meeting rooms at Level 8 and Level 5, Main Tower.

Lunch will be served daily at Mandarin Grand Ballroom II and III, Main Tower.

Gala Dinner

Date 6 August 2017 (Sunday)

Time 7.00 pm – 9.00 pm

Venue Mandarin Orchard Hotel, Imperial Ballroom at Level 35, Orchard Wing

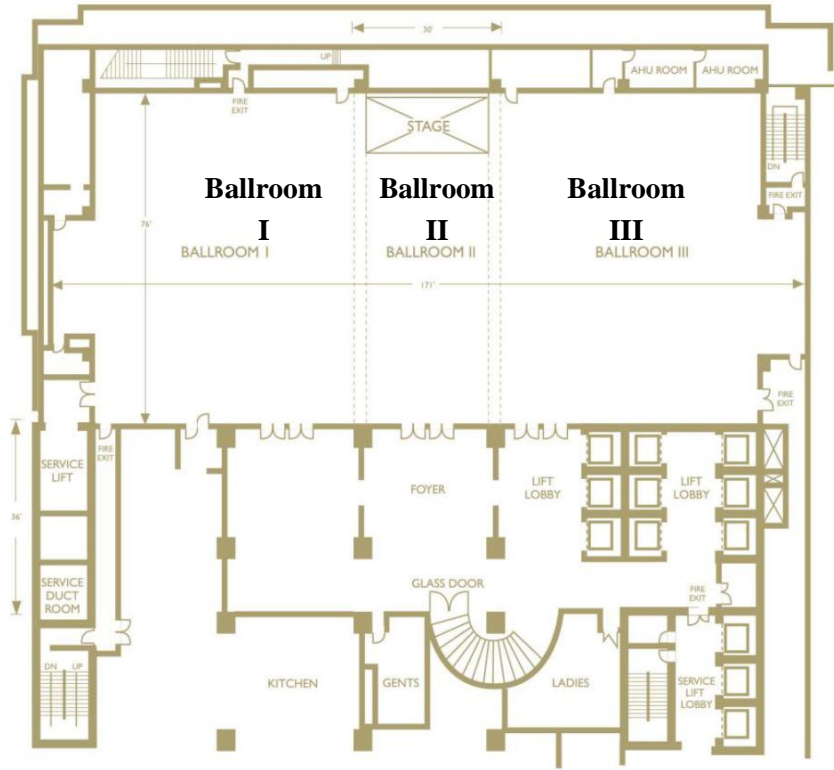
Conference Rooms and Floor Plans (Maps will follow)

The opening ceremony, keynotes, and distinguished speeches will be held at the Mandarin Grand Ballrooms which are located at Level 6 of the Main Tower of the hotel. All parallel sessions will either be held at Meeting Rooms 801- 805 located at Level 8 of the hotel or Grange Ballroom at Level 5, Main Tower.

Each session is assigned a unique number which indicates where the session will be held. For instance, Session 1-A will be held at Meeting Room 801 and Session 1-B will be at Meeting Room 802. Please take note that Session 1-F will be held at Grange Ballroom.

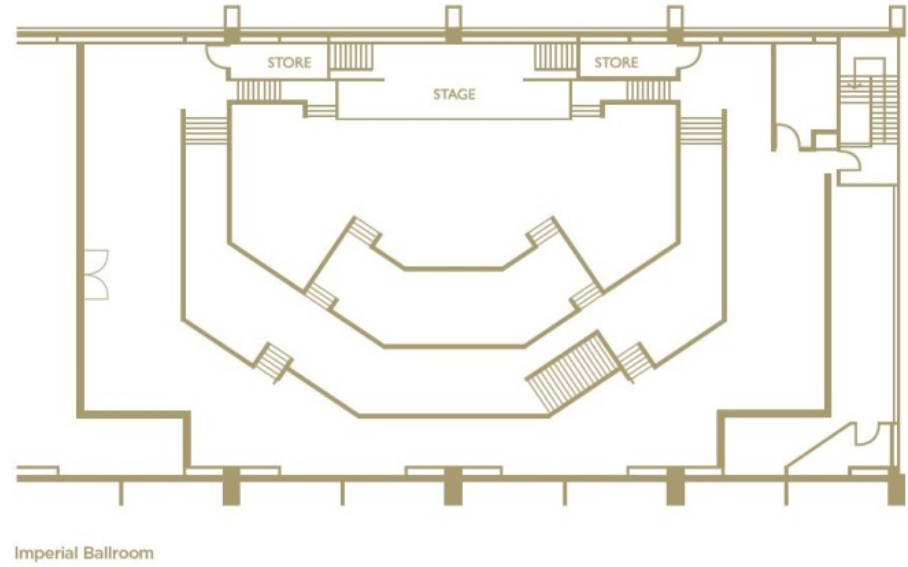
Plenary Sessions (Opening, Keynotes, Distinguished speech) and Lunch

Mandarin Grand Ballrooms at Level 6, Main Tower



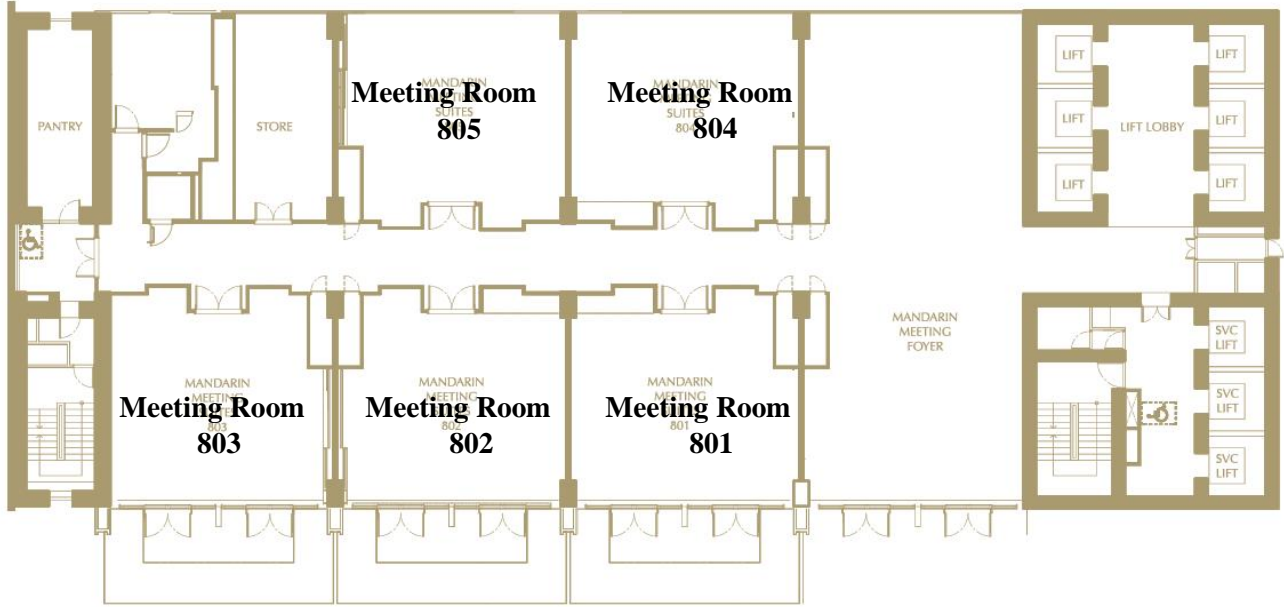
Gala Dinner

Imperial Ballroom at Level 35, Orchard Wing



Parallel Sessions

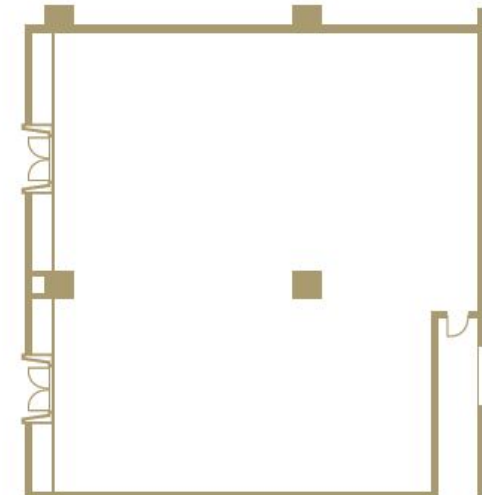
Mandarin Meeting Rooms at Level 8, Main Tower



Mandarin Meeting Suite

Parallel Session & Welcome Reception

Grange Ballroom at Level 5, Main Tower



Internet Access

Wireless internet access within the hotel area is chargeable. Please contact the Hotel Business Centre.

Uploading of Presentation – Service Station and Hours

Paper presenters are to upload PowerPoint slides to the laptops provided in the meeting rooms 10 minutes before their scheduled presentations. Laptops are able to accept thumb drive, CD-R and CD-RW.

Attendance and Punctuality

The EAAERE Committee would like to extend its gratitude for your presence and for coming on time in all sessions and activities throughout the congress.

Information & Assistance

Visit the Help Desk located outside Mandarin Grand Ballroom I Foyer at Level 6.

Emergency

Day: Conference staff

Night: Dial 999

Day and Night: EAAERE2017@ntu.edu.sg

Travel & Tour

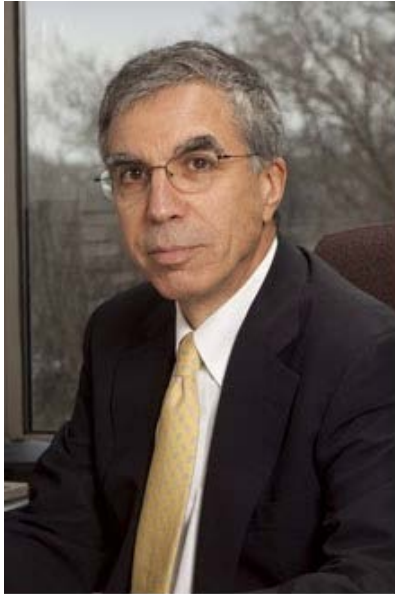
Tour information is available at the hotel reception.

SCHEDULE AT A GLANCE

Saturday 5 August, 2017	Sunday 6 August, 2017	Monday 7 August 2017	Tuesday 8 August 2017
	8:00-8:50am Registration	8:00-8:50am Registration	
	09:00-:9:30am Opening Remarks (by Guest-Of-Honor: Senior Minister of State for Environment and Water Resources Dr Amy Khor)	9:00-10:00am Parallel Session 4	9am-1pm Post-Conference Tour C: Gardens by the Bay D: Many Faces of Singapore <i>Not available</i> E: Urban Farming F: Singapore City Tour G: Mangrove Kayak (Day Tour)
	09:30-10:30am Keynote Speech 1 (by Prof Robert Stavins)	10:00-11:00am Distinguished Speech (by Prof Parkash Chander)	
	Coffee Break	Coffee Break	
	11:00-12:00am Keynote Speech 2 (Prof Yew-Kwang NG)	11:30-12:30pm Parallel Session 5	
	12:00am-1:00pm Parallel Session 1		
	1-2pm Lunch	1-2pm Lunch & General Assembly	12:30- 1:30pm Lunch
			12:30-1:30pm Lunch & 2 nd BOD Meeting
2-4pm 1 st BOD Meeting	2:00pm-3:00pm Parallel Session 2	1:30-2:30pm Poster Session	
	Coffee Break	2:30-3:30pm Parallel Session 6	
	3:30-4:50pm Parallel Session 3	Coffee Break	
		4:00-4:50pm Parallel Session 7	
		4:50-5:00pm Closing Ceremony	
6-7pm Registration	7-9pm Gala Dinner	6-11pm Post-Conference Tour	
7-9pm Welcome Reception		A: Singapore by Night B: Night Safari	
8-10pm Special Dinner (for invited guests only)			

KEYNOTE SPEAKERS

Professor Robert N. Stavins
Harvard University



Speaker's Introduction:

Robert N. Stavins is the A. J. Meyer Professor of Energy & Economic Development at the Harvard Kennedy School, Director of the Harvard Environmental Economics Program, Director of Graduate Studies for the Doctoral Programs in Public Policy and Political Economy & Government, Co-Chair of the Harvard Business School-Kenny School Joint Degree Programs, and Director of the Harvard Project on International Climate Agreements. He is a University Fellow of Resources for the Future, a Research Associate of the National Bureau of Economic Research, Co-Editor of the *Review of Environmental Economic and Policy* and the *Journal of Wine Economics*, and a member of the Board of Directors of Resources for the Future and the Scientific Advisory Board of the Fondazione Eni Enrico Mattei. He is an elected Fellow of the Association of Environmental and Resource Economists. He was formerly Chairman of the Environmental Economics Advisory Committee of the U.S. Environmental Protection Agency's Science

Advisory Board. He has been a Lead Author of the Second, Third, and Fifth Assessment Reports of the Intergovernmental Panel on Climate Change. His research has focused on diverse areas of Environmental Economics and policy, and has appeared in leading economics, law, and policy journals, as well as a dozen books. He has been a consultant to the several Administrations, Members of Congress, environmental advocacy groups, the World Bank, the United Nations, state and national governments, and private foundations and firms. He holds a B.A. in Philosophy from Northwestern University, an M.S. in Agricultural Economics from Cornell, and a Ph.D. in Economics from Harvard. Homepage: <https://scholar.harvard.edu/stavins/home>

Keynote Speech: “*What Can an Economist Possibly Have to Say about Climate Change (in the Age of Trump)*”

Professor Stavins will begin by arguing that an economic perspective is essential for full understanding – and hence the best action – on the problem of global climate change. He will review how the natural science of climate change leads to the economics of climate change and how that leads to the key geopolitical challenges presented by this global commons problem. He will describe why policy analysts around the world have focused on carbon pricing as a key policy instrument to address climate change, will describe the worldwide status of carbon pricing, including both carbon taxes and cap-and-trade policies, and will examine the basic consequences of explicit and implicit carbon pricing. This will lead to a discussion of the international dimensions of climate change policy. Professor Stavins will describe the Paris Agreement and emphasize how it is a departure from twenty years of climate negotiations. Given that national policies are key, he will turn his attention to the types of policies that countries have put in place and may launch in the future. This raises the question of how the United States will proceed with the new Trump administration. First, Stavins will examine the path the administration has taken and is likely to take in the future with domestic climate policy, and then he will look at the Trump administration’s approach in the international domain. He will conclude with reflections on the path ahead for the Paris Agreement.

Professor Yew-Kwang Ng Nanyang Technological University



Speaker's Introduction:

Yew-Kwang Ng, Winsemius Professor in Economics, Nanyang Technological University (NTU) and Emeritus Professor, Monash University, has been a fellow of the Academy of Social Sciences in Australia since 1980. Before his service at NTU, he was a professor of economics at Monash University 1985-2012. In 2007, he received the highest award (Distinguished Fellow) of the Economic Society of Australia. He has published more than a dozen books and more than 200 refereed journal papers in Economics, Biology, Cosmology, Mathematics, Philosophy, Psychology, etc., including *American Economic Review*, *Economic Journal*, *Journal of Political Economy*, *Review of Economic Studies*, *Journal of Economic Theory*, *Social Choice & Welfare*. Recent books includes *Common Mistakes in Economics*, Nova, 2011 (open access); *Markets and Morals*, contract signed with Cambridge University Press; *How Did the Universe Come About?* Fudan

University Press, 2011; *The Road to Happiness*, Fudan University Press, 2013; *Happinessism*, Wunan Press, Taiwan, 2015. He obtained his BCom from Nanyang University in 1966, and PhD from Sydney University in 1971. Homepage: <http://www.ntu.edu.sg/home/ykng/>

Keynote Speech: “*Why is environmental protection inadequate?*”

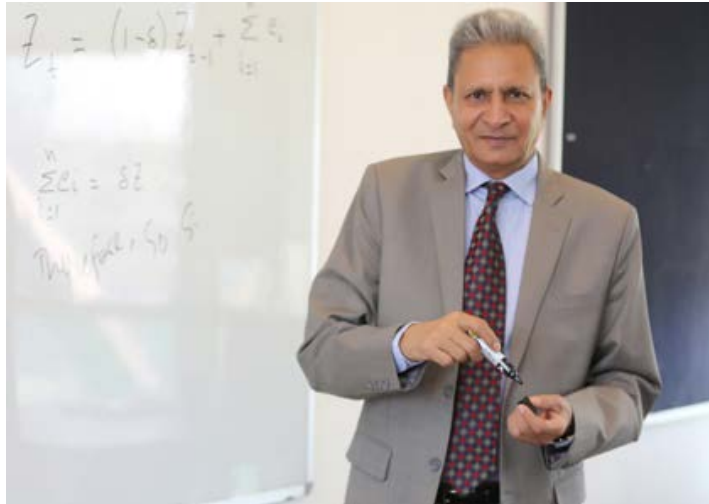
Despite having been a topical issue for a long time, environmental protection has been inadequate and under-emphasized in practice due to a number of reasons.

- Environmental protection (especially climate change) has an important global element. The world consists of more than two hundred countries, giving rise to the publicness problem. The U.N. is too weak to tackle the problem. The U.S. fails to lead, especially under Trump.
- Environmental disruption is an external effect typically leading to market failure. Most governments have not done a good job in tackling this failure, resulting in the double failures of both the market and the government.
- Mistakes by prominent economists including Nobel laureates in putting too much reliance on the market accentuate the problem.
- Inadequate understanding of basic economics leads to the failure to use the most efficient method of taxing pollution (e.g. objection to ‘rights to pollute’). Using quotas has potentially disastrous long-term consequences.
- Under business as usual, we will likely end up fast in extinction (hundreds instead of billions of years). The huge loss of possible global extinction trumps almost all considerations, making our current attention to environmental protection grossly inadequate.
- After the levels of survival and comfort, additional consumption is virtually useless in increasing happiness, especially at the social level. Environmental protection, even if very costly in money terms, is almost costless in the more fundamental term of welfare.

DISTINGUISHED SPEAKERS

Professor Parkash Chander

Jindal School of Government and Public Policy



Speaker's Introduction:

Parkash Chander, Professor of Economics and Executive Director of Center for Environmental Economics and Climate Change at Jindal School of Government and Public Policy, is a Fellow of the Econometric Society, an Associate Editor of Journal of Public Economic Theory, a member of the Advisory Board of Journal of Economic Surveys, and a member of the International Advisory Board of Singapore Economic Review. He has previously held professorial positions at

Indian Statistical Institute, Delhi and National University of Singapore (in reverse order). Also, he served as Head of Indian Statistical Institute, Delhi and as Head of Department of Economics, National University of Singapore.

After completing his PhD from Indian Statistical Institute, Chander was a post doc to Professor Leo Hurwicz. He has researched primarily in the areas of public economics, environmental economics, and game theory and applications. His publications include articles in *Econometrica*, *Review of Economic Studies*, *Journal of Economic Theory* and other leading journals in economics. Professor Chander has held visiting appointments at Johns Hopkins University, California Institute of Technology, University of Pennsylvania, Vanderbilt University, CORE (Louvain-la-Neuve), the Autonomous University of Barcelona, International Monetary Fund, among other institutions. Homepage: <http://parkashchander.com/>

Distinguished Speech: “*Coase and Games with Empty Cores*”

This paper addresses a three decade old debate concerning validity of the Coase theorem in games with empty cores and shows that it does not really break down in three-player superadditive characteristic function games with empty cores. To show this the paper introduces a stronger notion of a credible deviation and an infinitely farsighted stable set which looks much like a traditional von Neumann-Morgenstern stable set, but not amenable to similar criticisms.

INSTRUCTIONS FOR CONGRESS PARTICIPANTS

PARALLEL SESSIONS

Equipment and Time Frame

A computer (MS Windows environment) will be available in each room. Session participants can use either PowerPoint (.ppt or .pptx) or Portable Document Format (.pdf) for their presentations. Congress staffs will be happy to assist in resolving any technical issues. However, connecting personal laptops is not encouraged. The time allocated for each paper is 20 minutes for a session with three papers, including time for both presentation and general discussion; 30 minutes for a session with two papers.

Presenters

Presenters ought to finish uploading their les to the computers 10 minutes prior to the beginning of a session. Common file names such as EAAERE or 2017 should not be used to avoid overwriting other people's presentation.

Chairs

Chairs are invited to come to the room 10 minutes prior to the beginning of a session. They will introduce the session and speakers, make sure the presentation proceed as scheduled, and guide the discussion from the floor following paper presentation. In each session, the chair is programmed to be the presenter of the last paper. In case the scheduled chair does not attend, the presenter of the session's actual last paper is expected to take the role of chair.

Some may want to attend different parallel sessions and move in the middle of session. So please do not change the order of the presentations. If for some reason a presenter doesn't show up, take a break or extend the previous discussion, and return for the next talk on time. Also note that no discussant is assigned and open the floor for discussion right after each presentation.

POSTER SESSIONS

Equipment and Time Frame

The panel size for a poster stand is 1m x 1m (or approx. 3ft by 3 ft). The Poster area is located at the Mandarin Grand Ballroom I at the 6th floor. Congress staffs and the necessary tools and materials (tapes, pins, scissors, etc.) will be ready to help authors hang their posters on the panel. The time for oral presentation of each poster is 10 minutes. Nevertheless, all posters will be exhibited throughout the entire duration of the Congress.

Presenters

Presenters should first check the number of your poster stand from the list located in the poster area, and display the poster at your earliest convenience. For the presentation, a session chair will be responsible to keep the time and move the audience smoothly from poster to poster. Presenters are encouraged to stay next to their posters long enough to answer questions and interact with the audience after the oral report.

CONGRESS PROGRAM

Aug 5, 2017 (Saturday)	
14:00 – 16:00 Mandarin Meeting Suites 801, Main Tower 8F	1 st BOD Meeting
18:00 – 19:00 Grange Ballroom, Main Tower 5F	Registration
19:00 – 21:00 Grange Ballroom, Main Tower 5F	Welcome Reception
20:00 – 22:00	Special Dinner (for invited guests only)

Aug 6, 2017 (Sunday)													
08:00 – 08:50 Grand Mandarin Ballroom 1 Foyer, Main Tower 6F	Registration												
09:00 – 09:30 Grand Mandarin Ballroom 1, Main Tower 6F	<p>Opening Ceremony</p> <ul style="list-style-type: none"> • Prof Hsiao-Chi Chen, President of the EAAERE; Head and Professor of the Department of Economics, National Taipei University • Prof Euston Quah, Local Organizing Committee Chair of the 7th Congress of the EAAERE <p>Opening Remarks Guest-Of-Honour Dr Amy Khor, Senior Minister of State, Ministry of Environmental and Water Resources, Singapore</p>												
09:30 – 10:30 Grand Mandarin Ballroom 1, Main Tower 6F	<p>Keynote Speech “<i>What Can an Economist Have to Say About Climate Change Policy in the Age of Trump</i>”</p> <p>Prof Robert M. Stavins, A. J. Meyer Professor of Energy & Economic Development, Harvard Kennedy School; Director, Harvard Environmental Economics Program Harvard University</p> <p>Chair: Prof Euston Quah, Head and Professor of Economics, Nanyang Technological University; President of the Economic Society of Singapore</p>												
10:30 – 11:00 Grand Mandarin Ballroom 2,3, Main Tower 6F	Tea Break												
11:00 – 12:00 Grand Mandarin Ballroom 1, Main Tower 6F	<p>Keynote Speech “<i>Why is Environmental Protection Inadequate</i>”</p> <p>Prof Yew-Kwang Ng, Albert Winsemius Chair Professor of Economics Nanyang Technological University</p> <p>Chair: Prof Daigee Shaw, Academia Sinica (Institute of Economics); Former President of the EAAERE</p>												
12:00 – 13:00	<p>Parallel Session (1) 20min/paper</p> <table border="1"> <tr> <td>Energy Conservation1</td> <td>Urban Sewage Treatment and Water Use</td> <td>Energy and Environmental Policy</td> <td>Future Design</td> <td>Pollution and Economic Growth</td> <td>Environment and Health Implications</td> </tr> <tr> <td>Suites 801 Main Tower 8F</td> <td>Suites 802 Main Tower 8F</td> <td>Suites 803 Main Tower 8F</td> <td>Suites 804 Main Tower 8F</td> <td>Suites 805 Main Tower 8F</td> <td>Grange Ballroom Main Tower 5F</td> </tr> </table>	Energy Conservation1	Urban Sewage Treatment and Water Use	Energy and Environmental Policy	Future Design	Pollution and Economic Growth	Environment and Health Implications	Suites 801 Main Tower 8F	Suites 802 Main Tower 8F	Suites 803 Main Tower 8F	Suites 804 Main Tower 8F	Suites 805 Main Tower 8F	Grange Ballroom Main Tower 5F
Energy Conservation1	Urban Sewage Treatment and Water Use	Energy and Environmental Policy	Future Design	Pollution and Economic Growth	Environment and Health Implications								
Suites 801 Main Tower 8F	Suites 802 Main Tower 8F	Suites 803 Main Tower 8F	Suites 804 Main Tower 8F	Suites 805 Main Tower 8F	Grange Ballroom Main Tower 5F								
13:00 – 14:00	Lunch												
	General Assembly												

Grand Mandarin Ballroom Main Tower 6F	Grand Mandarin Ballroom 2,3 Main Tower 6F	Grand Mandarin Ballroom 1, Main Tower 6F				
14:00 – 15:00	Parallel Session (2)					
Social Capital and Sustainable Development Suites 801 Main Tower 8F	Choice of Energy Suites 802 Main Tower 8F	Energy and Resources1 Suites 803 Main Tower 8F	Stakeholders and Resource Management Suites 804 Main Tower 8F	Biological Diversity and Water Management Suites 805 Main Tower 8F	Forest Management and Agricultural Production Grange Ballroom Main Tower 5F	
15:00 – 15:30 Common Place, Main Tower 8F	Tea Break					
15:30 – 16:50	Parallel Session (3)					
Power Sector: Technology and Market Suites 801 Main Tower 8F	Cases of Climate Change Impacts Suites 802 Main Tower 8F	Pollution Control and Voluntary Regulation Suites 803 Main Tower 8F	Regulatory Practices and Productivity of Firms Suites 804 Main Tower 8F	Fishery and Climate Change Impact Suites 805 Main Tower 8F	Energy Conservation2 Grange Ballroom Main Tower 5F	
19:00 – 21:00 Imperial Ballroom 35F, Orchard Wing	Gala Dinner					

Aug 7, 2017 (Monday)						
08:00 – 08:50 Grand Mandarin Ballroom 1 Foyer, Main Tower 6F	Registration					
09:00 – 10:00	Parallel Session (4)					
Waste, Recycling and Pollution Suites 801 Main Tower 8F	Market Structure and Environmental Regulation Suites 802 Main Tower 8F	Institutions and Sustainable Development Suites 803 Main Tower 8F	Energy Policy Assessment Suites 804 Main Tower 8F	Urban Air Pollution Suites 805 Main Tower 8F	Energy and Resource2 Grange Ballroom Main Tower 5F	
10:00 – 11:00 Grand Mandarin Ballroom 1, Main Tower 6F	Distinguished Speech “ <i>Coase and Games with Empty Cores</i> ” Prof Parkash Chander, Jindal School of Government and Public Policy; Former Head of Economics, National University of Singapore Chair: Prof Ken-Ichi Akao, Professor of Environmental and Resource Economics, Waseda University; Chief Managing Editor, <i>Environmental Economics and Policy Studies</i> ; President, Society for Environmental Economics and Policy Studies					
11:00 – 11:30 Grand Mandarin Ballroom 2,3, Main Tower 6F	Tea Break					
11:30 – 12:30	Parallel Session (5)					
Climate Change Policies Suites 801 Main Tower 8F	Environmental Regulation and Instruments Suites 802 Main Tower 8F	Clean Development Mechanism: Really Clean Consequences? Suites 803 Main Tower 8F	Waste Management and Recycling Suites 804 Main Tower 8F	Environmental Kuznets Curve Re-Visited Suites 805 Main Tower 8F	Environmental Quality: Consumer Perspective Grange Ballroom Main Tower 5F	

12:30 – 13:30 Grand Mandarin Ballroom, Main Tower 6F	Lunch Grand Mandarin Ballroom 2,3 Main Tower 6F	2 nd BOD Meeting Grand Mandarin Ballroom 1, Main Tower 6F				
13:30 – 14:30 Grand Mandarin Ballroom 1, Main Tower 6F	Poster Session 10min/paper					
14:30 – 15:30	Parallel Session (6)					
	Energy Poverty and Energy Efficiency Suites 801 Main Tower 8F	Food Security Suites 802 Main Tower 8F	Power Sector: Assessment and Regulations Suites 803 Main Tower 8F	Carbon Emission in Asia Suites 804 Main Tower 8F	International Environmental Agreements Suites 805 Main Tower 8F	Green Accounting in Practice Grange Ballroom Main Tower 5F
15:30 – 15:50 Common Area, Main Tower 8F	Tea Break					
15:50 – 16:50	Parallel Session (7)					
	Forest Carbon Storage and Eco System Services Suites 801 Main Tower 8F	Political Economy Suites 802 Main Tower 8F	Environmental Regulation and Firms' Competiveness Suites 803 Main Tower 8F	N/A Suites 804 Main Tower 8F	N/A Suites 805 Main Tower 8F	N/A Grange Ballroom Main Tower 5F
16:50 – 17:00 Grand Mandarin Ballroom 1, Main Tower 6F	Closing Ceremony					
18:00 – 23:00	Post-Conference Tour Option A: Singapore by Night Option B: Night Safari					

Aug 8, 2017 (Tuesday)	
09:00 – 13:00	Post-Conference Tour Option C: Gardens by the Bay Option D: Many Faces of Singapore <i>Not available</i> Option E: Urban Farming Option F: Singapore City Tour Option G: Mangrove Kayak (Day Tour)

Sessions Details

Aug 6, 2017 (Sunday) Parallel Session (1)

Time	12:00 – 1:00	
1A: Energy Conservation1		Room 801, Main Tower 8F Chair: Toshi H. Arimura
Driving Factors of Energy and CO2 Emission Increases in Thailand Under Consumption Perspectives: A Hybrid-Unit Energy Input-Output Approach	Tharinya Supasa	National Central University
Energy Conservation Habit Formation after Demand Response. Field Experiment	Yoshiaki Ushifusa	The University of Kitakyushu
Seemingly Unrelated Intervention :Environmental Management Systems at Workplaces and Energy Conservation Behaviors at Home	Toshi Arimura	Waseda University
1B: Urban Sewage Treatment and Water Use		Room 802, Main Tower 8F Chair: Zhou Kai
Floating Population and Urban Water Use in China	Yang Jie	Kobe University
Economic Analysis of The Sponge City Program In China: Case Study of Chengdu City	Xiao Liang	Shenzhen University
The Study of Operation Efficiency of Urban Sewage Treatment Plant based on Stochastic Frontier Analysis in China	Zhou Kai	Renmin University of China
1C: Energy and Environmental Policy		Room 803, Main Tower 8F Chair: Duong Hai Long
Technology Licensing and Environmental Policy Instruments: Price Control versus Quantity Control	Sungwan Hong	University of Tokyo
Price Salience and Imperfect Information: Evidence from Experiments at Fueling Stations in Brazil	Duong Hai Long	National University of Singapore
Evaluating the Benefits for the Policy Instruments of Green Energy Technology	Ting-Ting Lin	Taiwan Research Institute
1D: Future Design		Room 804, Main Tower 8F Chair: Shibly Shahrier
Can Deliberation Solve the Intergenerational Sustainability Dilemma?	Raja Rajendra Timilsina	Kochi University of Technology
Intergenerational Sustainability and The Degree of Capitalism in the Society: A Field Experiment	Shibly Shahrier	Kochi University of Technology
Intergenerational Sustainability Dilemma and Democracy: Future Ahead and Back Mechanism as A Potential Solution	Koji Kotani	Kochi University of Technology
1E: Pollution and Economic Growth		Room 805, Main Tower 8F Chair: Budy Resosudarmo
Investigation of the Relationship between Air Pollution and Economic Growth in Hebei Province - Based on Decoupling Analysis and Generalized Impulse Response Function	Bian Yangzi	Renmin University of China
Dynamic Analysis of Pollution in a Small Open Economy	Yasuhiro Nakamoto	Kansai University,
Tariff Reform and Air Pollution in Indonesia	Budy Resosudarmo	Australian National University
1F: Environment and Health Implications		Grange Ballroom, Main Tower 5F

Chair: Shiqiu Zhang		
Economic Analysis of Health Benefits from Replacing Rural Residential Coal use by Clean Energy: Taking winter heating in northern China as an example	Xiang Zhang	Peking University
Modelling Heterogeneity in Residents' Preferences for Health Risk Reductions From Air Quality Improvement in China	Shiqiu Zhang	Peking University

Aug 6, 2017 (Sunday) Parallel Session (2)

Time	14:00 – 15:00
------	---------------

2A: Social Capital and Sustainable Development		Room 801, Main Tower 8F
Chair: Jie Li		
Farmers' Participation in Rural Tourism, Social Capital and Environmental Protection Awareness: Evidence from the Poor Rural Mountainous Areas in West China	Jie Li	Jiaotong University
Community Participation of Sea Farming Demonstration Zone in Mao'ao Bay of Taiwan: a Perspective of Local Residents	Jyun-Long Chen	Taiwan Fisheries Research Institute
Sustainable Performance Index of Ousteri Wetland: Evaluating the Ecological, Economic and Social Characteristics	Zareena Begum Irfan	Madras School of Economics

2B: Choice of Energy		Room 802, Main Tower 8F
Chair: Yixuan Gao		
Examining The Relationship Between Electricity Consumption, Economic Growth, Energy Prices And Technology Development In India	Geetilaxmi Mohapatra	Birla institute of Technology and Science (BITS)
Patterns of Road Energy Use and Its Implications for Forecasting in Four Developing Countries	Yixuan Gao	University of New Hampshire
Effect of EV and FCEV Diffusion within the Automobile Industries to Korean Economy with an Emission Trading System: An Exploratory CGE Approach	Taek-Whan Han	Seo Kyeong University

2C: Energy and Resources1		Room 803, Main Tower 8F
Chair: Eric Fesselmeyer		
How Do Households Discount Over Centuries? Evidence from Singapore's Private Housing Market	Eric Fesselmeyer	National University of Singapore
The Effect of Electricity Prices on Residential Solar Photovoltaic Panel Adoption Fukushima as a Natural Experiment	Takahiko Kiso	University of Aberdeen

2D: Stakeholders and Resource Management		Room 804, Main Tower 8F
Chair: Katsuya Tanaka		
Assessing transition risk with stress test methodology	Alessandro Ravina	Paris 1 Sorbonne University
How to Reconcile Private Sector Engagement with Country Ownership in Multilateral Environmental Funds? Case of the Global Environmental Facility (GEF) the Green Climate Fund (GCF)	Yutaro Niimi	Nomura Research Institute
Factors Affecting the Use of Genetic Resources by Private Firms in Japan	Ayumi Onuma	Keio University

2E: Biological Diversity and Water Management		Room 805, Main Tower 8F
Chair: Yoomi Kim		
Water Environmental Capacity Study in Lushui Basin	Wen YANG	Renmin University

		of China
Quantitative analysis of the effectiveness of the Convention on Biological Diversity (CBD)	Yoomi Kim	Seoul National University
A Computable General Equilibrium (CGE)-Based Integrated Model for Water Management Under CO2 Mitigation Strategies in a Rapidly Urbanizing Catchment	Hancheng Dai	Peking University

2F: Forest Management and Agricultural Production		Grange Ballroom, Main Tower 5F Chair: Payal Shah
Preferences and Acceptances for REDD+ Projects in Different Forest Management Regimes: A Choice Experiment in Kalimantan, Indonesia	Ari Rakatama	University of Western Australia
Robbing Peter to Pay Paul: State Sponsored Reforestation and Agricultural Production in Southeast Asia	Paulo Santos	Monash University
Determinants and Implications of Global Protected Area Effectiveness	Payal Shah	Okinawa Institute of Science and Technology

Aug 6, 2017 (Sunday) Parallel Session (3)

Time	15:30 – 16:50
------	---------------

3A: Power Sector: Technology and Market		Room 801, Main Tower 8F Chair: Myunghun Lee
The Potential Cost Saving and Power Supply Price Markdown Effects of Input Allocative Efficiency in Korean Electric Power Sector	Myunghun Lee	Inha University
The Causality between Unbundling Vertically-Integrated Electricity Industry and Renewable Energy Development	Kota Sugimoto	Kyoto university
Electricity Market Deregulation and Its Influences in Taiwan	Yu-Ting Lu	Taiwan Research Institute

3B: Cases of Climate Change Impacts		Room 802, Main Tower 8F Chair: Brantley Liddle
The Relationship Between Climate Change and Agricultural Productivity in MALAYSIA	A.S. Abdul-Rahima	Universiti Putra Malaysia
Warming and GDP Growth in the United States: A Heterogeneous, Common Factor Dynamic Panel Analysis	Brantley Liddle	Energy Studies Institute, NUS
How Does Weather Variability Affect Sectoral Income in Vietnam	Tran Thi Thu Hien	Hue University
Social cohesion and community-shared adaptation financing: Evidence from a tropical cyclone prone coastal district of Bangladesh	Sonia Akter	National University of Singapore

3C: Pollution Control and Voluntary Regulation		Room 803, Main Tower 8F Chair: Jing-you Wang
Dose Social Interaction Enhance Landowners' Voluntary Participation in a Forest Incentive Program?	Hideki Shimada	Kyoto University
Could environmental CSR and donations be a pollution-free card? An empirical analysis of	Hironori KAWASE	Kyushu Sangyo University
Analysis on Water Resources Utilization Efficiency of 113 Key Environmental Protection Cities in China Based on DEA Model	Jingyou Wang	Renmin University of China

A Tournament Tax Mechanism to Control Non-Point Source Pollution	Eiji SAWADA	Kyushu Sangyo University
--	-------------	--------------------------

3D: Regulatory Practices and Productivity of Firms		Room 804, Main Tower 8F
Chair: Zareena Begum Irfan		
Does Environmental Regulation Affect Productivity? Evidence from China's Textile Printing and Dyeing Industry	Bing Zhang	Nanjing University
The Relationship between Corporate Environmental Disclosure and Innovation Activity: Evidence from EU Corporations	Emiko Inoue	Kyoto University
Degrading or Sustaining: Assessing whether the Indian Firms Do follow Sustainable Reporting Framework	Zareena Begum Irfan	Madras School of Economics
Study on the Relationship between Industrial Sectors and Industrial Pollution in China from the Perspective of Regional-Based on the Grey Correlation Analysis	JIANG Shurui	Renmin University of China

3E: Fishery and Climate Change Impact		Room 805, Main Tower 8F
Chair: Shoichi Kiyama		
Do Marine Protected Areas Have Lower Overfishing Level?	Alin Halimatussadiyah	Universitas Indonesia
Valuing Climate Change Impacts on Coral Reef Ecosystems In Nha Trang Bay, Vietnam	Quach Thi Khanh Ngoc	Nha Trang University
Behavioral Responses Of Small-scale Fishers To A Collapse of The Fishery: Evidence From Japan	Shoichi Kiyama	Kyoto University

3F: Energy Conservation2		Grange Ballroom, Main Tower 5F
Chair: Jin-Li Hua		
Economic and Environmental Effects of Introduction of Renewable Power Sources: An Application of Scenario Input-Output Analysis to China and Japan	Jiayang Wang	University of Tokyo
Uncertain Climate Change, Learning and Optimal Technology Portfolio	Seung-Rae Kim	Hallym University
Energy Poverty, Oil Price and Income Inequality	Jin-Li Hu	National Chiao Tung University

Aug 7, 2017 (Monday) Parallel Session (4)

Time	09:00 – 10:00	
4A: Waste, Recycling and Pollution		Room 801, Main Tower 8F
Chair: Akihisa Mori		
Factors Affecting the Amount of MSW Incineration—A Structural Equations Modeling Approach	Sun Yueyang	Renmin University of China
Curse of Dirty Power: the Impact of Indoor Air Pollution on Cognitive Abilities and Health Outcomes	Yun Qiu	Jinan University
Agricultural Crop Production in Cadmium Contaminated Areas in Thailand	Akihisa Mori	Kyoto University

4B: Market Structure and Environmental Regulation		Room 802, Main Tower 8F
Chair: Wenyan Sun		
Mixed Oligopoly, Foreign Penetration and Environmental Policy	Wenyan Sun	Nanjing Audit University
A Case Study on the Effect of Environmental Taxes on High Polluted Enterprises	Siyu LIN	Renmin University of China
Managerial Delegation Contracts in a Cournot Duopoly with Pollution	Joanna Poyago-Theotoky	La Trobe University Melbourne

4C: Institutions and Sustainable Development		Room 803, Main Tower 8F Chair: Rintaro Yamaguchi
Corruption, Institutions, and Sustainable Development: Theory and Evidence from Inclusive Wealth	Rintaro Yamaguchi	Kyushu University
Bureaucratism, Corruption, and Firms' Environmental Investment and Abatement	Fuhai Hong	Nanyang Technological University

4D: Energy Policy Assessment		Room 804, Main Tower 8F Chair: Thanicha Ruangmas
A Study on the Impacts of Industry Transition Under Decarbonization Due to the Technology Innovation and Carbon Pricing on Economy and GHG Reduction	Sunhee Suk	Institute for Global Environmental Strategies
The Environmental Costs of Fossil Fuel Subsidies Removal: Evidence from Thailand's Natural Gas Price Deregulation	Thanicha Ruangmas	University of Wisconsin-Madison
What Stimulates Increase in Vietnam's Energy Consumption?	Tharinya Supasa	National Central University

4E: Urban Air Pollution		Room 805, Main Tower 8F Chair: Daigee Shaw
Cleaning the Air for the 2008 Beijing Olympic Games: An Empirical Study of China's Thermal Power Sector	Teng Ma	Kobe University
Severe Air Pollution and School Absences	Haoming Liu	National University of Singapore
Addressing Endogeneity in Estimating the Demand for Environmental Attributes with the Hedonic Method in Taiwan	Daigee Shaw	Academia Sinica

4F: Energy and Resource2		Grange Ballroom, Main Tower 5F Chair: Michinori Uwasu
Developing Energy Literacy Index for Measuring and Examining the Relationship between Literacy and Energy Choices in Japan	Miwa Nakai	University of Tokyo
Do Resource Depletion Experiences Affect Social Cooperative Preferences? Analysis Using Field Experimental Data on Fishers in the Philippines and Indonesia	Kenta Tanaka	Musashi University
Problem Framing Affects Deliberation and Decision Making: A Case Study of Future Energy Mix in Japan	Michinori Uwasu	Osaka University

Aug 7, 2017 (Monday) Parallel Session (5)

Time	11:30 – 12:30	
5A: Climate Change Policies		Room 801, Main Tower 8F Chair: Akihisa MORI
A Global VAR Model for Evaluating Impacts of the Paris Agreement	Hyunyoung CHO	Seoul National University
An Integrated And Transparent Tool To Assess The Fairness And Ambition Of Climate Pledges	CUI Xueqin	Renmin University of China
Financing Modality and Effectiveness of Adaptation Project: Comparative Analysis of GEF-UNDP and AF-UNEP projects in Cambodia	Akihisa MORI	Kyoto University

5B: Environmental Regulation and Instruments		Room 802, Main Tower 8F Chair: Jung Yun Choi
Analysis of Emissions Trading Mechanism under Different	Je -Liang Liou	Chung-Hua

Equity Initial Rights Allocation Principles: A Provincial Simulation of Upcoming Five-Year Plans in China		Institution for Economic Research
Effect of Environmental Regulation on Employment: Evidence from Jiangsu Province	Zhu Ziyi	Nanjing Audit University
Voluntary Environmental Regulation, Environmental Innovation and Environmental Performance in a Globalized World Economy: The Case of ISO 14001	Jungyun Choi	Korea University

5C: Clean Development Mechanism: Really Clean Consequences? **Room 803, Main Tower 8F**
Chair: Yimeng Du

The Development of Wind Power-Related Technology in China: The Role of The Clean Development Mechanism	Ling Chu	Kobe University
Measuring Social Benefits of The Clean Development Mechanism: Empirical Evidence from Rural China	Yimeng Du	Kobe University
Trade in Value Added and GHG Inventories	Yunsun Park	Seoul National University

5D: Waste Management and Recycling **Room 804, Main Tower 8F**
Chair: GeumSoo Kim

Optimal Disposal Fee and Planned Obsolescence	Shuichi Ohori	Kansai University
An Economic Analysis on the Collection of Waste and Location of Recycling Plants (cancelled)	Takashi Saito	Kyorin University
The Determinants of Waste Agricultural Plastics Generation in the Republic of Korea	Geumsoo Kim	Hoseo University

5E: Environmental Kuznets Curve Re-Visited **Room 805, Main Tower 8F**
Chair: Sabuj Kumar Mandal

Analysis of the Environmental Kuznets Curve of CO2 Emission in China and OECD Countries	Yongsung Cho	Korea University
EKC revisited and revised: decomposing the short-run and long-run dynamics of SO2 emissions, economic growth and energy efficiency in China	Bin Hu	Central University of Finance and Economics
Is Economic Growth A Cure or Cause for Environmental Degradation? – Empirical Evidences from Developing Countries	Sabuj Kumar Mandal	Indian Institute of Technology Madras

5F: Environmental Quality: Consumer Perspective **Grange Ballroom, Main Tower 5F**
Chair: Nopasom Sinphurmsukskul

The Amenity Value of Urban Greenspaces in Seoul: A Choice Experiment Approach	Andy Choi	National Institute of Ecology
Personality in Contingent Valuation Interviews: The Predictive Power of Narrow Versus Broad Trait Measures	Nopasom Sinphurmsukskul	Kasetsart university
Towards Determination of Users' Fees for Visitors and Estimation of Recreation Values of Taklong Island National Marine Reserve (TINMR)	Rodelio Subade	University of the Philippines Visayas

Aug 7, 2017 (Monday) Parallel Session (6)

Time	14:30 – 15:30
------	---------------

6A: Energy Poverty and Energy Efficiency **Room 801, Main Tower 8F**
Chair: Frank Adusah-Poku

International Comparison of Industry-Level Total Factor Energy Efficiency	Satoshi Honma	Tokai University
Energy Poverty in Ghana: Any Progress Made So Far?	Frank Adusah-Poku	Kobe University
Energy Efficiency Gap of SADC Countries Compared with EU and ASEAN countries	Ming-Chung Chang	Kainan University

6B: Food Security		Room 802, Main Tower 8F Chair: Robert Rudolf
The Impacts of Soybean Export Outlet on Deforestation and Welfare in the Brazilian Amazon	Suhyun Jung	University of Michigan-Ann Arbor
Development of Resource Exports and Food Supply in Southeast Asia: Historical experience in the nineteenth century	Atsushi Kobayashi	Osaka Sangyo University
The Impact of Food Price Shocks on Food Security: Panel Evidence from Tanzania	Robert Rudolf	Korea University

6C: Power sector: Assessment and Regulations		Room 803, Main Tower 8F Chair: Soocheol Lee
Modelling the Power Sectors Toward 2050 in East Asia: The Choice of Power Sources and Its Economic Impact by Feed-in-Tariffs and Carbon Taxes to Meet the 2030 NDCs and 2050 CO2 Targets	Tae-Yeoun Lee	Ryukoku University
Modeling the Power Sectors toward 2050 in East Asia – The choice of Power Sources Under Regulations on Nuclear and Coal Power Generation	Azuma Aiko	Shokei Gakuin University
Modeling the Power Sectors Toward 2050 in East Asia: Economic and Environmental Impact by Choice of Power Sources Under Regulations on Nuclear and Coal Power Generations	Soocheol Lee	Meijo University

6D: Carbon Emission in Asia		Room 804, Main Tower 8F Chair: Kai Su Chien-Ming Lee
Transition Pathways to Emissions Peak in Chinese Cities: a Case Study of Qingdao	ZHANG Xiaoli	Renmin University of China
The Impact of Foreign Direct Investment and Income on Carbon Dioxide Emissions in Vietnam	Pham Thi Ha	Kyushu University
Is It Possible to Achieve Greenhouse Gas Emissions Peak by Early 2030 in China	Kai Su Chien-Ming Lee	National Taipei University

6E: International Environmental Agreements		Room 805, Main Tower 8F Chair: Ken-Ichi Akao
International Environmental Agreements with Full Participation Under the Evolutionary Mechanism of Imitation	Hsiao-Chi Chen	National Taipei University
International Environmental Negotiations and Agreements: A Differential Game Interpretation	Ken-Ichi Akao	Waseda University
Reciprocity in a Climate Coalition Negotiation	Yu-HSUAN LIN	Catholic University of Korea

6F: Green Accounting in Practice		Grange Ballroom, Main Tower 5F Chair: Chan-Fatt Cheah
Green GDP and Health Expenditure in Malaysia	Chan-Fatt	Universiti Putra

	Cheah	Malaysia
Ecosystem Service Valuation and Accounting Framework in Japan	Masayuki Sato	Kobe University

Aug 7, 2017 (Monday) Parallel Session (7)

Time	16:00 – 16:50
------	---------------

7A: Forest Carbon Storage and Eco System Services		Room 801, Main Tower 8F
		Chair: Seong-Hoon Cho
Product-Related Environmental Regulation and the Porter Hypothesis: Empirical Evidence from Malaysian and Vietnamese Firms	Qizhong YANG	Osaka University
Optimal Provision of Forest Carbon Storage and Cost Effectiveness of Incentive Payment Approaches	Seong-Hoon Cho	University of Tennessee

7B: Political Economy		Room 802, Main Tower 8F
		Chair: Fuhai Hong
Does Democracies Induce Higher Energy Efficiency	Li-Chen Chou	Wenzhou Business College
Positive and Negative Impacts of Oversea Visitors on Japanese Regional Economy	Mariko Makita	Nagoya University

Aug 7, 2017 (Monday) Poster Sessions

Time	13:30 – 14:30
------	---------------

Grand Mandarin Ballroom 1&2, Main Tower 6F		
A Field Survey of Relationship Between Subjective Well-being and Social Capital in Denmark, Sweden, Finland and Switzerland	Shiori Tanaka	Tokyo Institute of Technology
Eco-labeling and Singaporean Sushi Consumption	Oishi Taro	Fukuoka Institute of Technology
Nature Connectedness and Willingness to Pay for Urban Ecosystem Services	Ippei Aoshima	Kobe University
Impacts of Heat Metering and Efficiency Retrofit Policy on Residential Energy Consumption: A Chinese Perspective	Lin Zhang	City University of Hong Kong

PARTICIPANT LIST

Number: Parallel Session Number

Alphabet: Room Location (A=801; B= 802; C=803; D=804, E=805, F=Grange)

C: Chairing Session

S/N	Presenter		Session
1	Abdul-sama	Abdul-rahim	3B
2	Adusahpoku	Frank	6A-C
3	Akao	Ken-ichi	6E-C
4	Akter	Sonia	3B
5	Aoshima	Ippei	P
6	Arimura	Toshihide	1A-C
7	Azuma	Aiko	6C
8	Bian	Yangzi	1E
9	Chang	Ming-chung	6A
10	Cheah	Chan Fatt	6F-C
11	Chen	Hsiao-chi	6E
12	Chen	Di	1B
13	Chen	Chunlung (Jyun-Long)	2A
14	Chen	Cheng-hung	1C
15	Cho	Seong-hoon	7A-C
16	Cho	Hyunkyung	5A
17	Cho	Yongsung	5E
18	Choi	Jungyun	5B-C
19	Choi	Andy	5F, 7A
20	Chou	Li-chen	7B
21	Chu	Ling	5C
22	Cui	Xueqin	5A
23	Dai	Hancheng	2E
24	Du	Yimeng	5C-C
25	Duong	Hai Long	1C-C
26	Fesselmeye	Eric	2C-C
27	Fujikawa	Kiyoshi	3F
28	Gao	Yixuan	2B-C
29	Halimatussadiyah	Alin	3E
30	Han	Taek-whan	2B
31	Hong	Sungwan	1C, 4D
32	Honma	Satoshi	6A
33	Hu	Jin-li	3F-C
34	Hu	Bin	5E
35	Huang	Chung-huang	1C
36	Inoue	Emiko	3D
37	Irfan	Zareena Begum	2A, 3D-C

38	Jiang	Shurui	7C
39	Jung	Suhyun	6B
40	Kawase	Hironori	3C
41	Kim	Seung-rae	3F
42	Kim	Yoomi	2E-C
43	Kim	Geum Soo	5D-C
44	Kiso	Takahiko	2C
45	Kiyama	Shoichi	3E-C
46	Kobayashi	Atsushi	6B
47	Kotani	Koji	1D
48	Kwon	Oh Sang	5A
49	Lee	Myunghun	3A-C
50	Lee	Soocheol	6C-C
51	Lee	Tae-yeoun	6C
52	Lee	Chien - Ming	6D-C
53	Li	Jie	2A-C
54	Liang	Xiao	3F
55	Liddle	Brantley	3B-C
56	Lin	Siyu	4B
57	Lin	Ting-ting	1C
58	Lin	Yu-hsuan	6E
59	Lin	Ting-ting	1C
60	Lin	Shih-mo	1A
61	Liou	Je-liang	5B
62	Liu	Haoming	4E
63	Lu	Yu-ting	3A
64	Ma	Teng	4E
65	Makita	Mariko	7B
66	Mandal	Sabuj Kumar	5E-C
67	Mohapatra	Geetilaxmi	2B
68	Mori	Akihisa	4A-C, 5A-C
69	Nakai	Miwa	4F
70	Nakamoto	Yasuhiro	1E
71	Niimi	Yutaro	2D
72	Ohuri	Shuichi	5D
73	Onuma	Ayumi	2D
74	Park	Yunsun	5C
75	Pham Thi	Ha	6D
76	Poyago-the	Joanna	4B
77	Qiu	Yun	4A
78	Quach	Thi Khanh Ngoc	3E
79	Rakatama	Ari	2F

80	Ravina	Alessandro	2D
81	Resosudarm	Budy P.	1E-C
82	Roh	Jae Sun	5A
83	Ruangmas	Thanicha	4D-C
84	Rudolf	Robert	6B-C
85	Santos	Paulo	2F
86	Sato	Masayuki	6F
87	Sawada	Eiji	3C
88	Shah	Payal	2F-C
89	Shahrier	Shibly	1D-C
90	Shaw	Daigee	4E-C
91	Shimada	Hideki	3C
92	Sinphurmsu	Nopasom	5F-C
93	Subade	Rodelio	5F
94	Sugimoto	Kota	7B
95	Suk	Sunhee	4D
96	Sun	Yueyang	4A
97	Supasa	Tharinya	P
98	Takashi	Saito	5D
99	Tanaka	Kenta	4F
100	Tanaka	Katsuya	2D-C
101	Tanaka	Shiori	P
102	Taro	Oishi	P
103	Timilsina	Raja	1D
104	Tran	Hien	3B
105	Ushifusa	Yoshiaki	1A
106	Uwasu	Michinori	4F-C
107	Wang	Jingyou	3C-C
108	Wang	Yue	1E
109	Wang	Jiayang	3F
110	Wen	Yang	2E
111	Yamaguchi	Rintaro	4C
112	Yang	Jie	3F
113	Yang	Qizhong	7C-C
114	Zhang	Xiaoli	6D
115	Zhang	Bing	3D
116	Zhang	Lin	P
117	Zhang	Xiang	1F
118	Zhang	Shiqiu	1F-C
119	Zhou	Kai	2E, 3F
120	Zhu	Ziyi	5B

This is the end of the Congress Handbook (Ver.6, September 12, 2017)