

# MScP (Master of Science) in PSYCHOLOGY

*A programme by Coursework*



EMPOWERING MINDS.

ELEVATING WELL-BEING.

TRANSFORMING LIVES.



**#12**

NTU is ranked  
12th globally

**#27**

Psychology is ranked  
27th globally by Subject



# Background

## Empowering the Next Generation of Psychologists

Good mental health is at the heart of how we thrive and flourish as individuals and as a society. Across Singapore and beyond, there is a growing call for psychologists who can make a real difference, supporting and empowering well-being in schools, workplaces, hospitals, community settings, and even within the justice system. The need for skilled professionals is not only for those who understand human behaviour, but for those who can bring empathy, creativity, and evidence-based solutions to some of today's most pressing psycho-socio-emotional challenges.

That's where our new **Master of Science in Psychology (MScP)** programme comes in. Created to meet the rising demand for compassionate, highly trained practitioners driven by empirical science and rigorous scholarship, these advanced degrees prepare you to step into meaningful roles within community mental health, neuropsychology, thanatology, and forensic psychology, amongst others.



## Be Part of the Change



Champion mental health, wellbeing, and community resilience.



Drive practice and policy by translating research into real-world impact.



Elevate your career with a qualification for advanced practice.



Shape the future of mental health, wellbeing, and community resilience through advocacy and innovation.



# Programme

## Highlight



The Master of Science in Psychology (MScP) programme is strategically designed to cultivate a highly skilled and compassionate workforce of mental health professionals.

The programme will prepare students for a career, or for further career progression, in specific areas including community mental health services, neuropsychology, thanatology, and forensic psychology, filling critical gaps while supporting national and global priorities to enhance mental well-being and resilience.

This degree programme is not only timely but crucial in fostering a society where mental health is prioritised and individuals have access to high-quality, compassionate, and effective mental health support.



# Overarching Aims

**To empower the next generation of psychology practitioners.**



The MScP will prepare skilled and compassionate psychologists to address the growing and diverse mental health needs of the local population and beyond.

**To inclusively cater to diverse mental health needs and desired career paths in Singapore and beyond.**



Unique from other local Psychology programmes, the MScP provides more options for students with various career aspirations, by offering multiple specialization tracks that lead to a range of career pathways.

**To deliver a fast-track, intensive programme that appeals to both local and international students.**



The MScP can be completed in 18 months with highly competitive tuition fees.

# 4 Specialization Tracks

## Community Health Psychology

As Singapore's pioneering track in Community Health Psychology, we train professionals to be catalysts for change. Drive real-world impact in community mental health, with multidisciplinary efforts to advocate for awareness and health promotion, develop strategic interventions for specialised home-based care and community outreach, and lead the enhancement of population-level wellbeing and resilience in society.



## Neuropsychology

The Neuropsychology track advances brain and cognitive science toward applied practice, with emphasis on clinical neuropsychological principles, neuropsychological assessment in adults and children, and either exposure to school-based neuropsychology or a focused anxiety disorders mini-track in evidence-based assessment and intervention. Together, the track equips graduates with integrated competencies linking brain-based assessment, targeted intervention, and translational research across educational and clinical settings.



## Thanatology

Asia's first specialised track in Thanatology, the study of dying, death, and grief. Train to become an expert professional, equipped to provide specialised, compassionate support for individuals, families, and communities navigating complexities at the end-of-life (EOL), pre and post-loss grief, and the bereavement experience. In the words of Palliative physician David Kuhl, "Dying is hard work," with this track focusing on the humanistic care we can render to others for life's final journey.



## Forensic Psychology

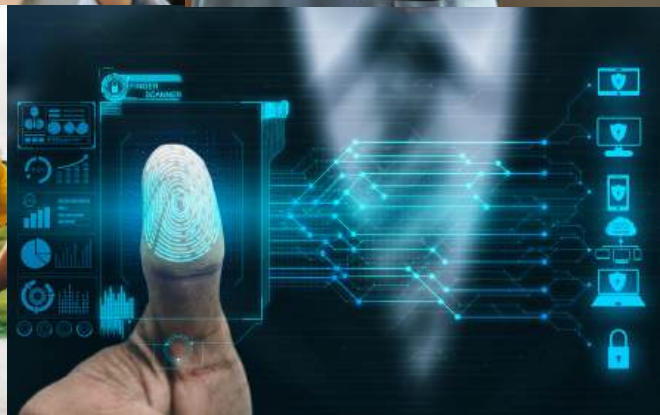
A highly specialised track dedicated to Forensic Psychology. Train to apply advanced psychological expertise across complex settings, including legal systems, criminal justice, law enforcement, public safety, and cyber-security.



# Key Highlights



- A highlight of the MScP programme is its **hands-on, applied focus**.
- Students complete **500 hours of practicum**, including **200 hours of direct practice experience** and **90 hours of integrated supervision**, all within the full-time MScP curriculum.
- While completing the MScP does not automatically grant professional registration with the *Singapore Registry of Psychologists (SRP)* or the *Singapore Association for Counselling (SAC)*, graduates are supported and connected to further clinical supervision opportunities tailored to their specialisation.
- **Neuropsychology** and **Forensic Psychology** graduates can pursue pathways toward SRP registration. In contrast, **Community Health Psychology** and **Thanatology** graduates are guided toward SAC registration – helping you continue your journey toward professional credentials with confidence.



# Programme Structure



## Tracks

Enrol in 1 of 4 tracks:

- Community Health Psychology
- Neuropsychology
- Thanatology
- Forensic Psychology



## Duration

Complete between 18 to 36 months (i.e. 5 to 9 full-time trimesters).

## Format

Runs on a trimester basis.

## Academic Units

Consists of 12 courses/36 AUs across 3 categories:

- Foundational Courses (5 courses/15 AUs)
- Track Specialization Courses (4 courses/12 AUs)
- Graduation Courses (3 courses/9 AUs)

## Practicum

Complete a total of 500 practicum hours, including:

- 200 hours of direct practice experience
- 90 hours of integrated supervision

# Admission & Fees



## Admission Criteria

- Bachelor's in Psychology or Social Sciences (2nd class lower or above) from reputable institutions.
- Strong interest in helping others, lifelong learning, ethical practice, and demonstrable fit with the programme (personal statement required).
- NTU Psychology Honours graduates who demonstrate a good fit with the programme will be considered for direct entry.
- Competitive GPA, relevant coursework/experience.
- IELTS  $\geq 6.5$  or TOEFL  $\geq 93$  (iBT)\*

## Tuition Fees

### AY2026 Tuition Fees

Programme	Amount (SGD)
MScP (18-month)	<b>\$68,175</b> <b>Payable equally over five trimesters</b>

All Singapore Citizens (SC) and Singapore Permanent Residents (SPR) are eligible for a S\$5,000 tuition fee subsidy. Additional fee subsidy of up to S\$15,000 is available for needy SC/SPR students who meet the qualifying criteria.

*\*For international applicants whose medium of instruction at the tertiary level was not in English*

# Career Prospects

The MScP provides a range of career pathways including academia, research, industry and community care.



**We look forward to welcoming you to the MScP family!**

**For enquiries, contact:**

Mr David Lim, MScP Senior Assistant Director

Email: [MSC-Psychology@ntu.edu.sg](mailto:MSC-Psychology@ntu.edu.sg)

**For more information**

Scan the QR code or visit our website at  
<https://www.ntu.edu.sg/sss/graduate-education/MScP>