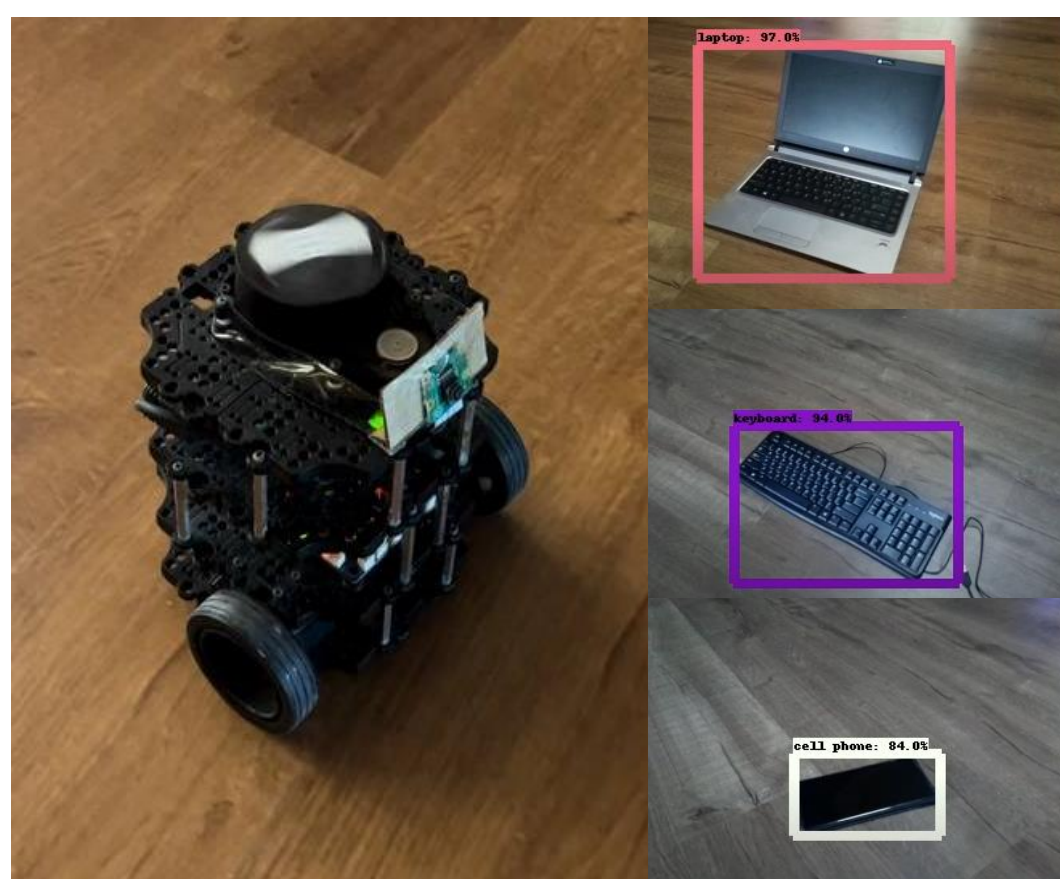


Intelligent Robotic Navigation

As a Child Companion

Student: Chew Zhi Kang

Supervisor: Dr Smitha K G



TurtleBot3 and Object Recognition



Child Tracking around a household


Project Objectives:

This project aims to develop a functionally tested TurtleBot3 capable of being a child companion with intelligent robotic navigation. The robot should be able to supervise a child by detecting and following the child around the house and notifying the parents immediately when the child falls. This will provide parents with a greater ease of mind and certainty when they have no choice but to leave their child unsupervised at home for a short period of time.

Features:



Real-time Object Recognition and Child detection using TensorFlow



Track and follow a child's movement by keeping the child within the Raspberry Pi Camera's field of vision



Determine if child has fallen at home



WhatsApp Notification using Imgur and Twilio API

WhatsApp Notification of child fallen

