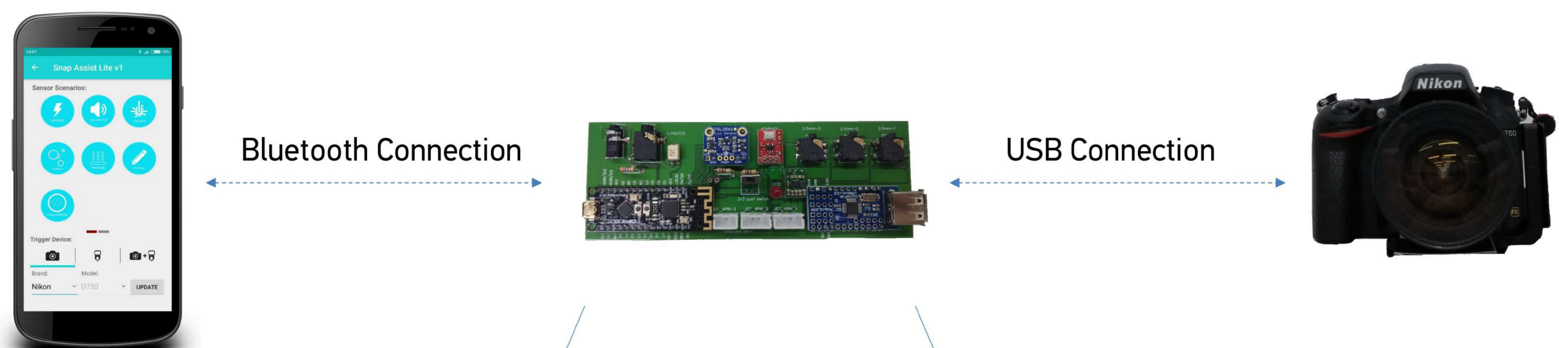


Intelligent Remote/Trigger

A Photographer's Buddy

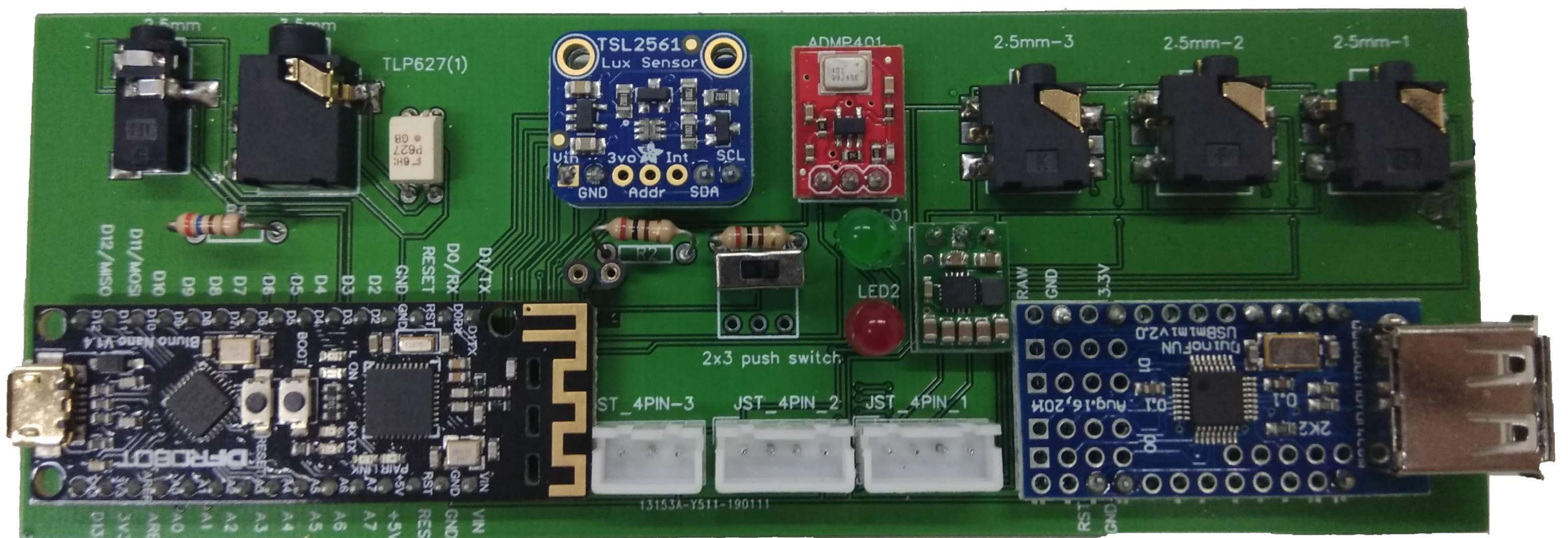
System that allow DSLR Camera to be triggered remotely and controlled by a smartphone application



External Flash Connector

Onboard Sound & Light Sensor

External Sensor Connectors



Arduino Bluno Nano

External Actuator Connectors

USB Connector For Camera

- Smartphone application is connected to Arduino via Bluetooth
- System contain onboard sound and light sensor
- Supports external sensors and actuators
- All settings can be changed through the smartphone application