

GPS Trail Planner

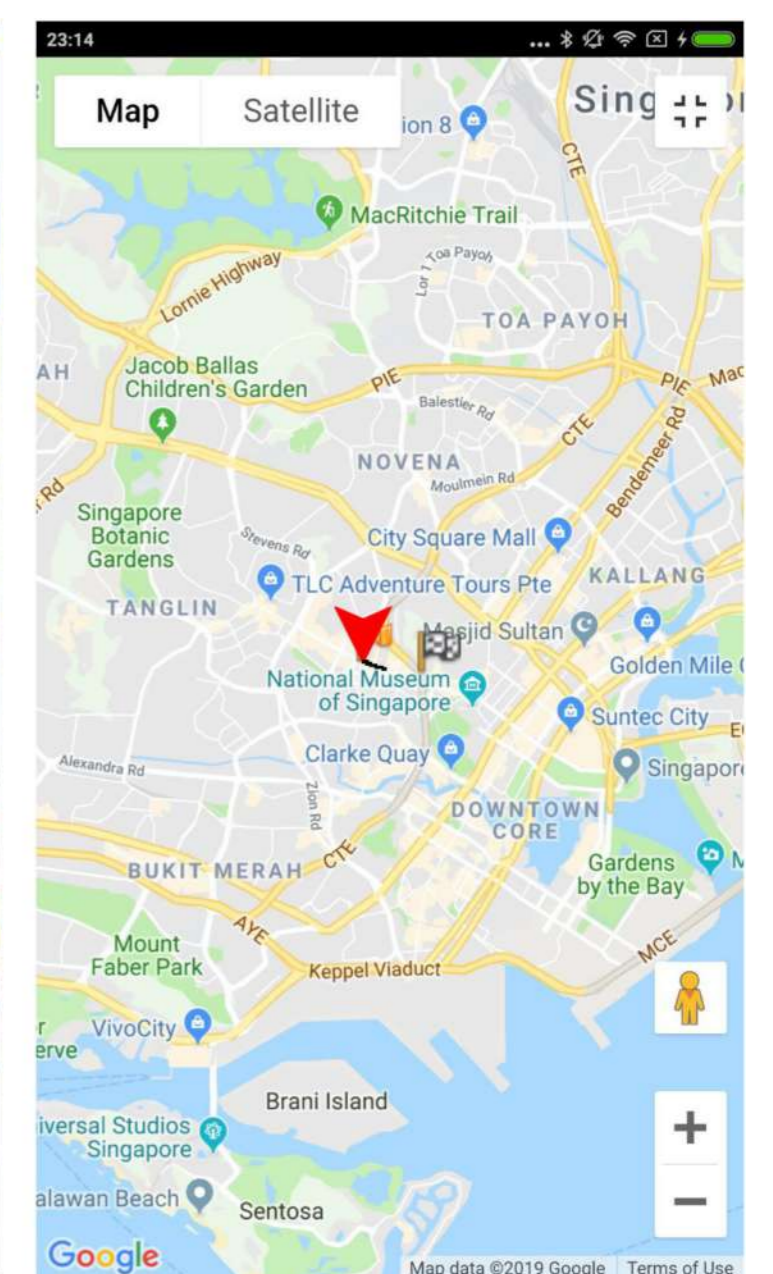
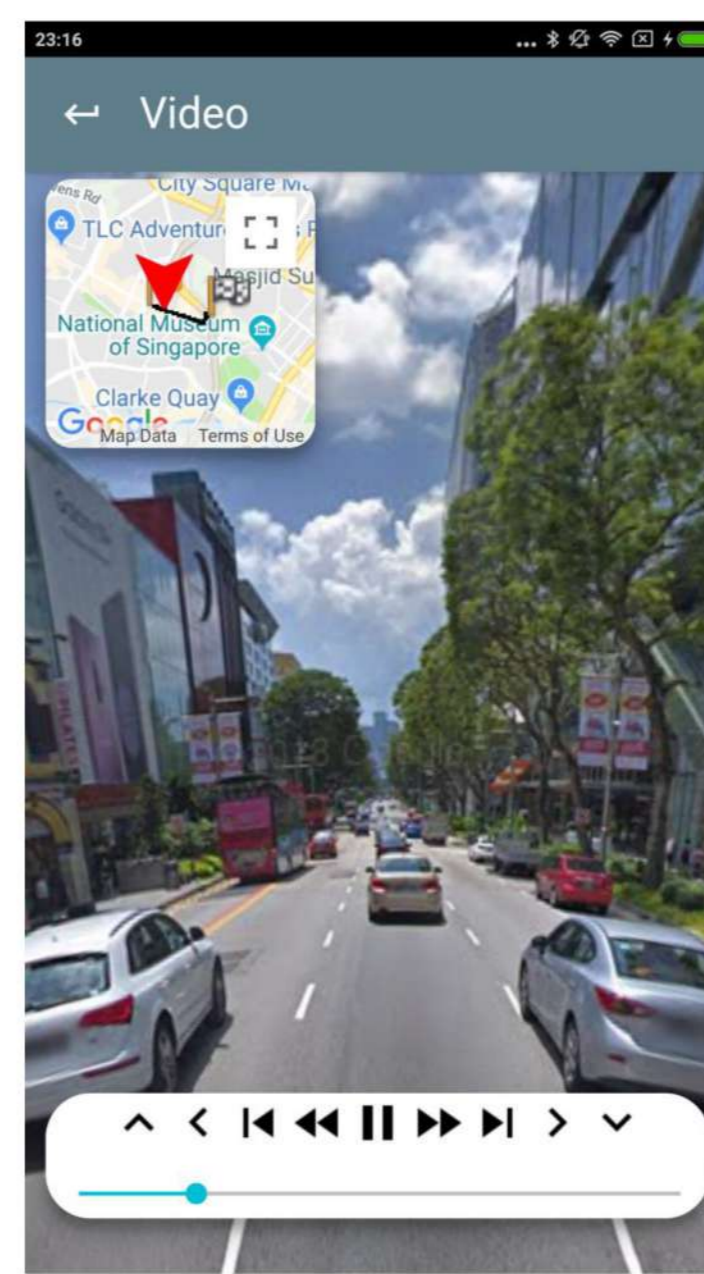
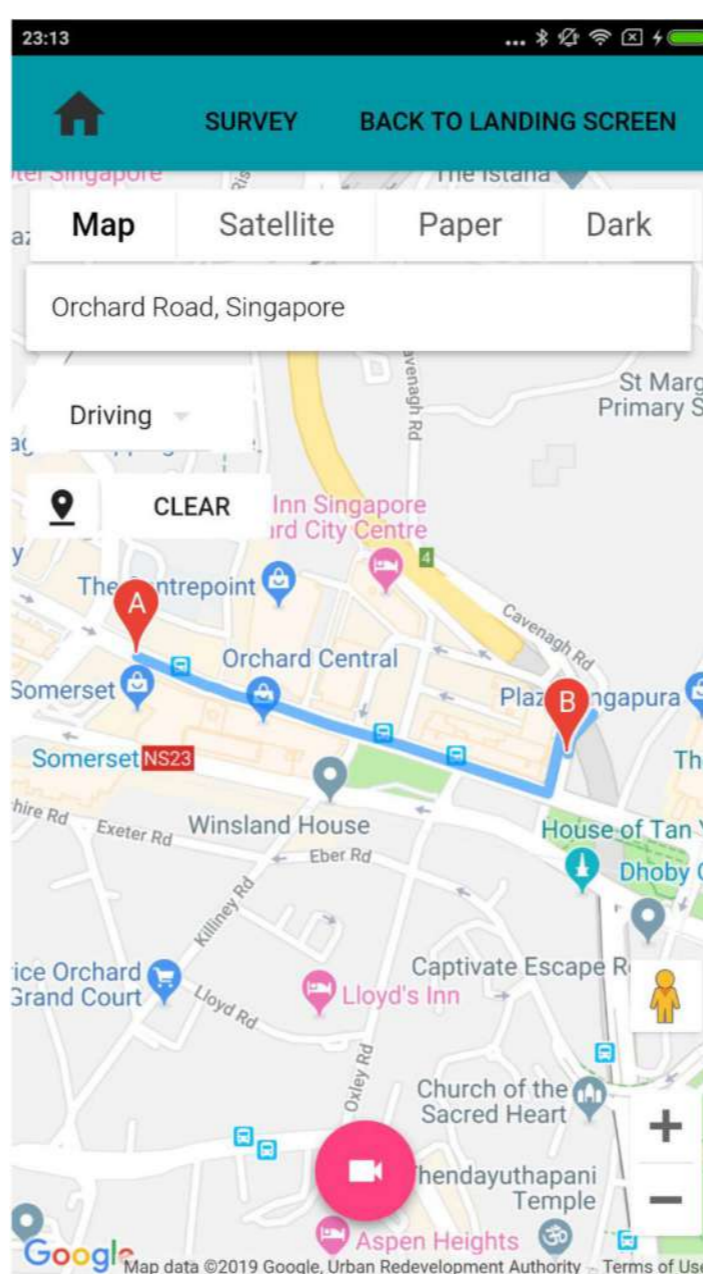
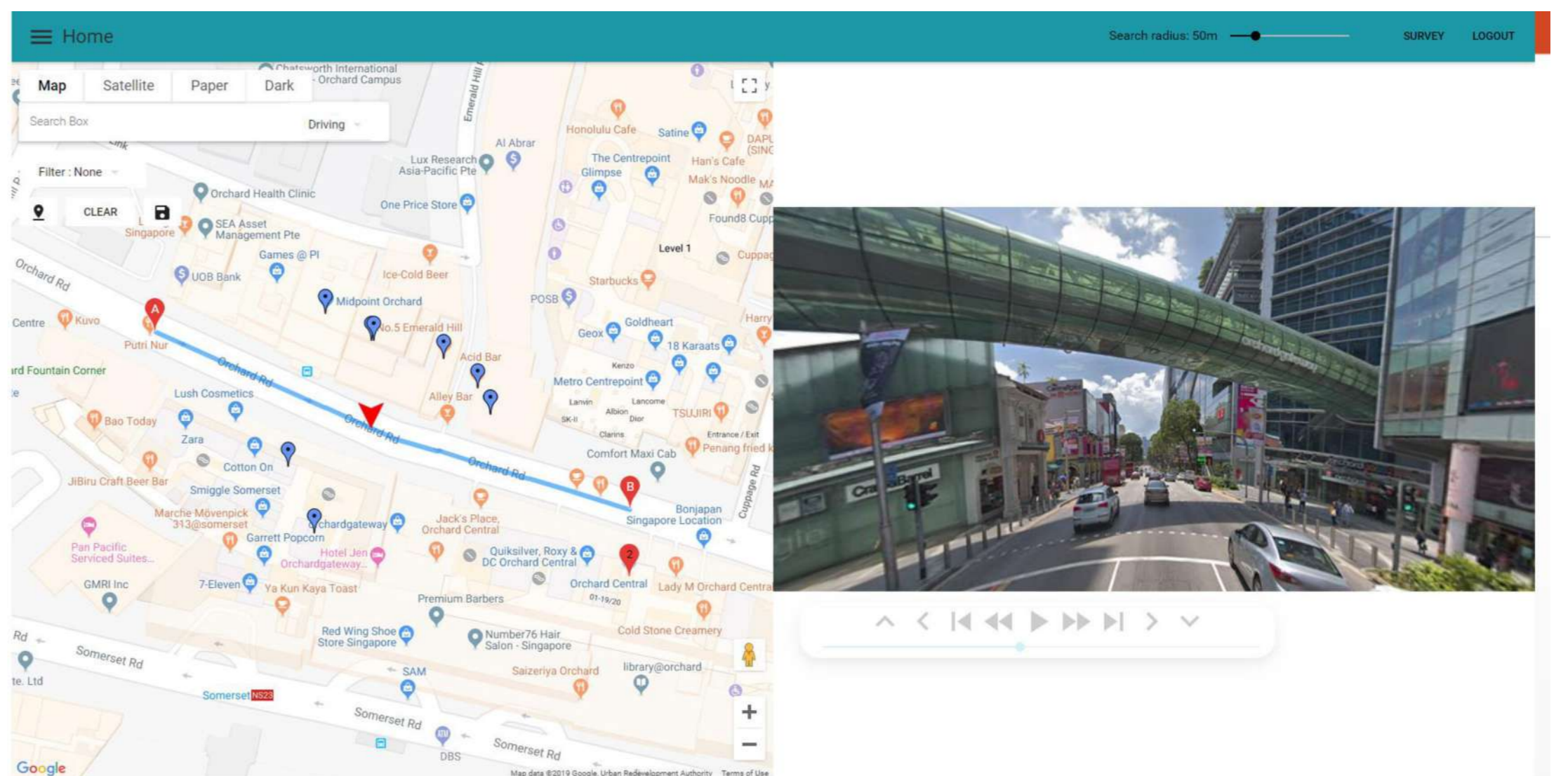
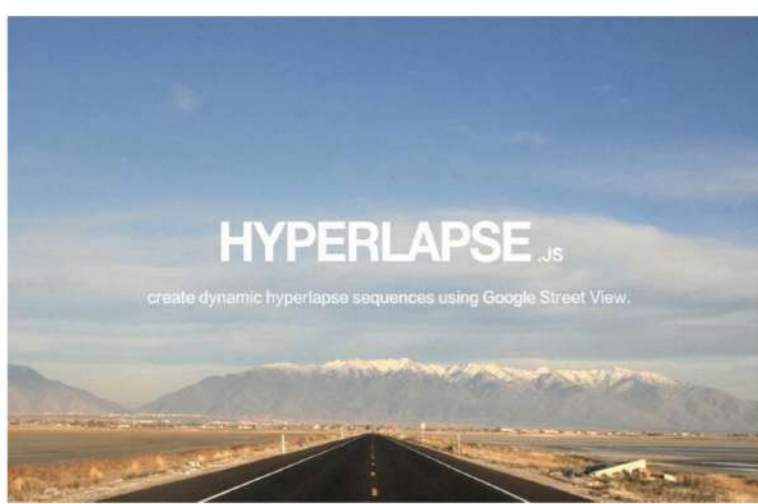
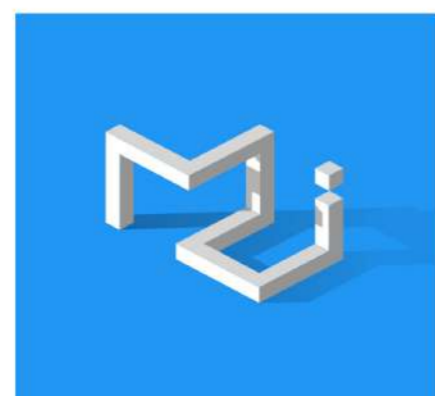


A web and mobile application that uses GPS data based on input coordinates from users. It produces a 360 first person view Hyperlapse video by stitching the Google Street view images using Hyperlapse.js Library. The goal is to make navigating more interactive and also helps to improve navigating by identifying landmarks through the video.

Technology used:

- Google Maps API
- Google Street View API

Frameworks and Libraries:



Users are able to control the video by using the implemented controller. It allows user to pause the video to view the surrounding of the displayed location.

The web and mobile applications works hand in hand with each other. With the “Save” feature, it encourages users to plan their route beforehand and retrieve it on their smart phones.