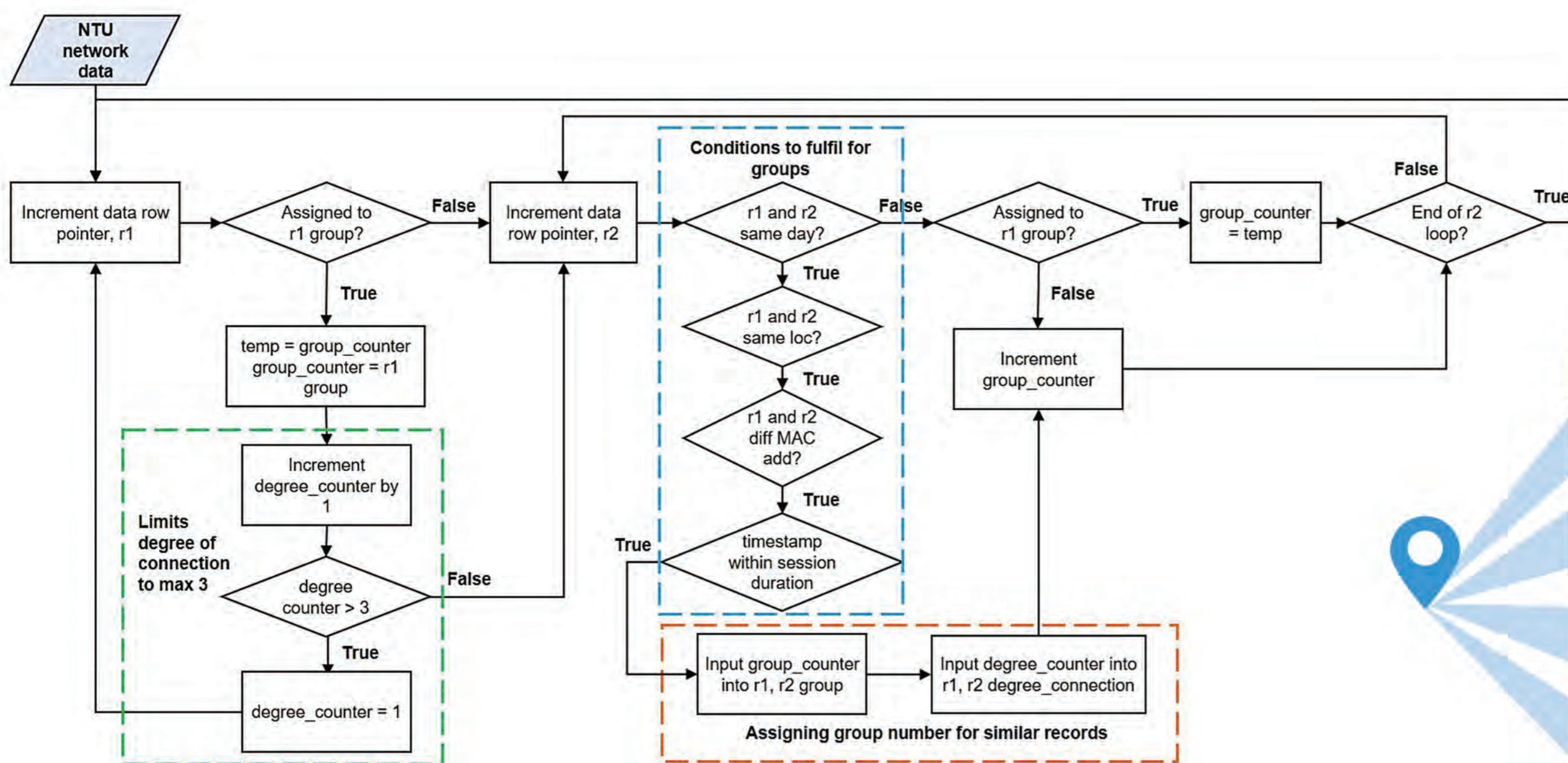
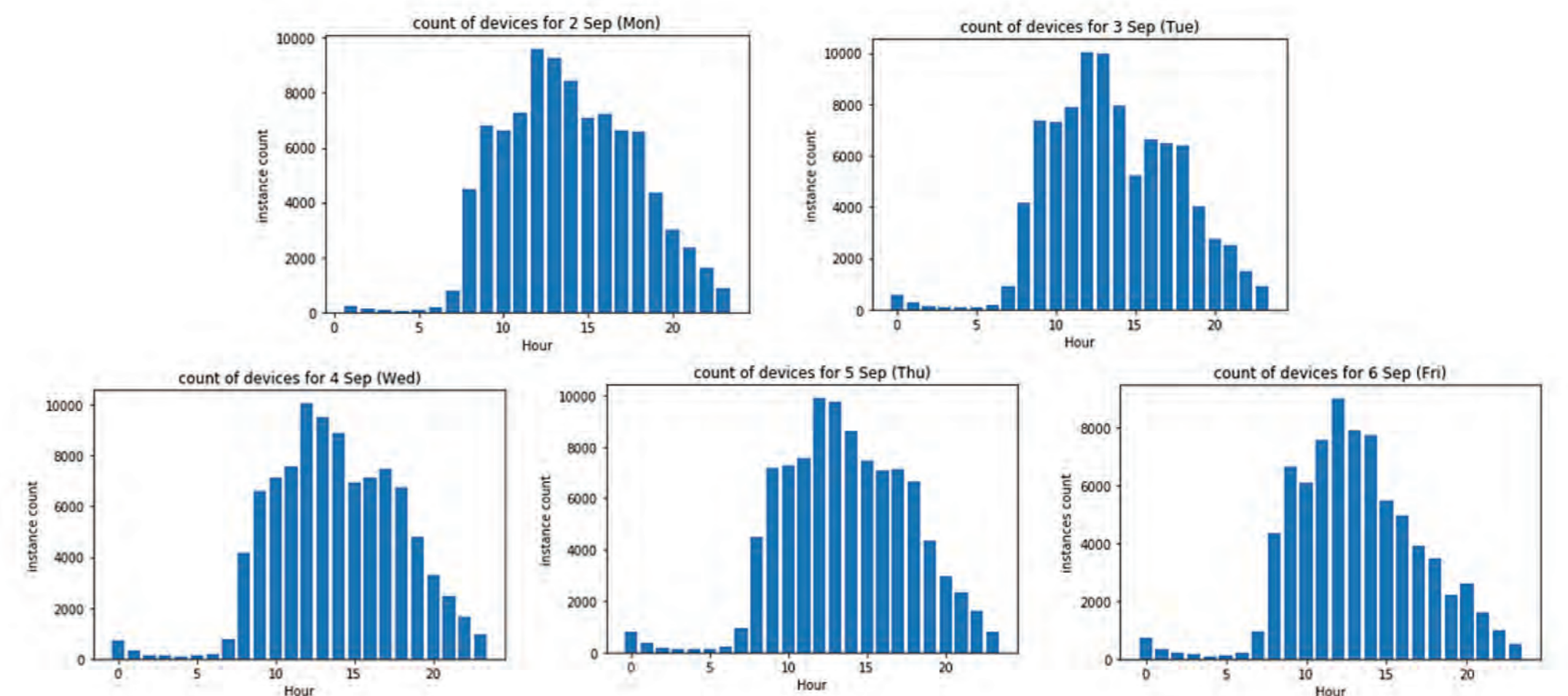
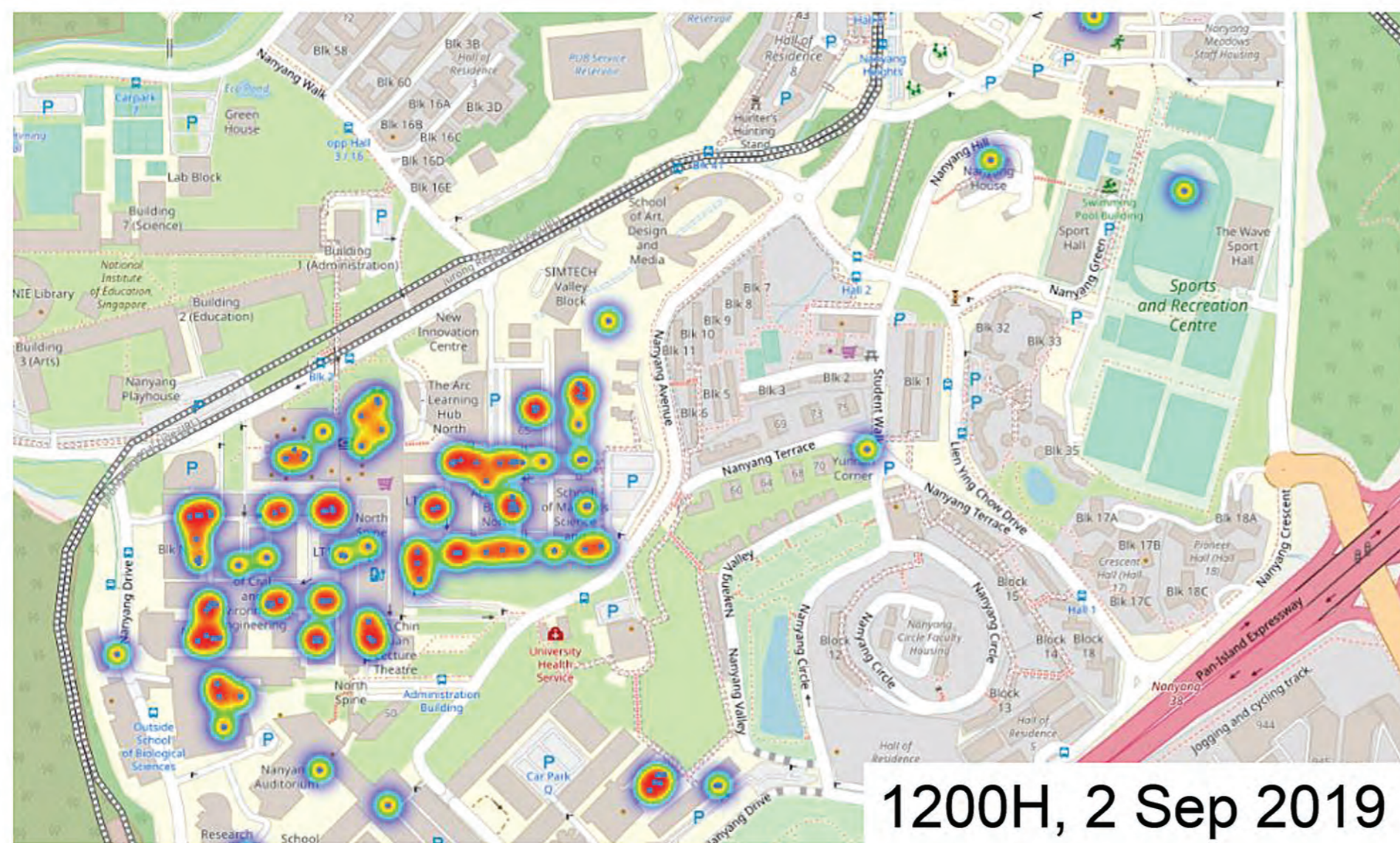


Understanding Campus Mobility

Analysing social behavioural patterns of students who partake in sports-related activities using WiFi data

Student: Christopher Gerard Toh Wei Hong

Supervisor: Assoc Prof Lee Bu Sung, Francis



Activity	Location examples
Study / School / Others	N1, N2, N3, N4, etc.
Recreational	SRC, NYH, YC, etc.
Eating	N2.1, NS3, etc.
Sports	SRC

Project description:

The project aims to understand two things: mobility patterns on campus, and if students who partake in sports-related activities are more sociable than the general student.

Overall, the project includes data pre-processing to prepare the data for visualization and analysis, a visualization module, and a group identification method to group individual users into social groups based on a set of conditions.