

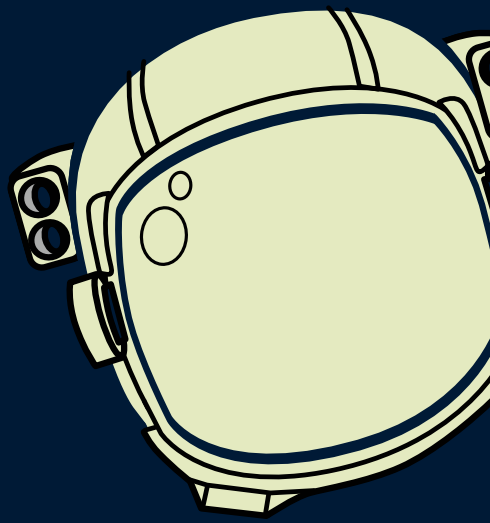
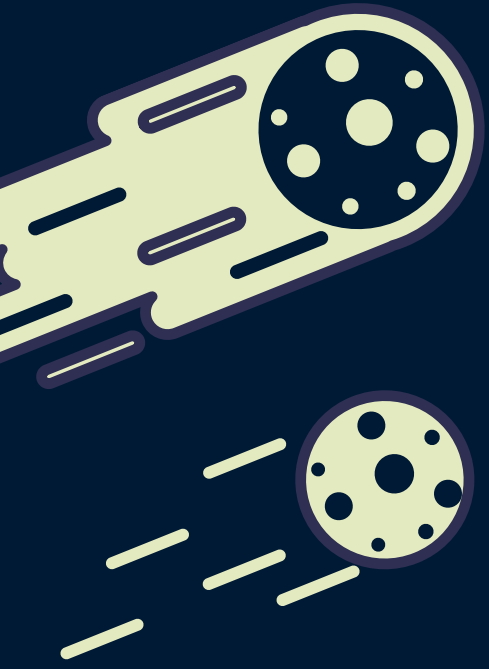


A World Space Week event

*brought to you by*

Office for Space Technology and Industry  
(OSTIn)

NTU Satellite Research Centre (SaRC)



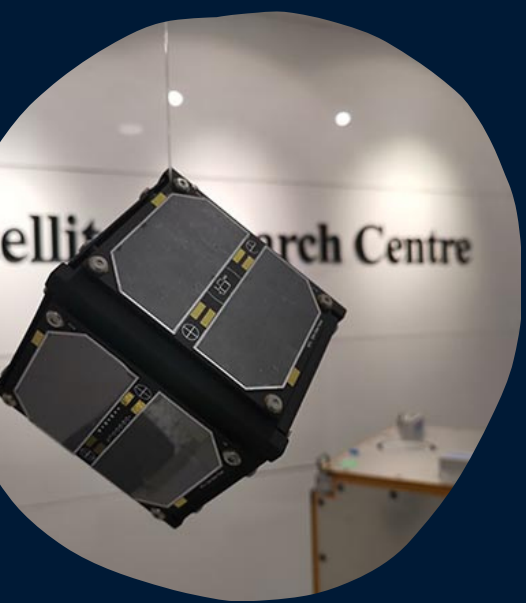
---

# BUILD-YOUR-OWN (PAPER) SPACECRAFT CONTEST

---

WIN a private tour of the NTU Satellite Research Centre for you and your family/friends!

- See how a spacecraft is built, tested & launched
- Sit in a Mission Control room
- Talk to engineers who build things that go into space!



**DEADLINE: 10TH NOV 2021**





# PRIZES:

## WINNERS

**Tour of NTU Satellite Research Centre for each winner + up to 4 family members or friends\***

&

**Entry featured on OSTIn social media**

**1 x** Best in Junior Category

**1 x** Best in Open Category

**1 x** Special prize: *Women in Space*

## RUNNERS-UP

**OSTIn goodie bags (including a book about Space Exploration)**

&

**Entry featured on OSTIn social media**

**2 x** Junior Category runners-up

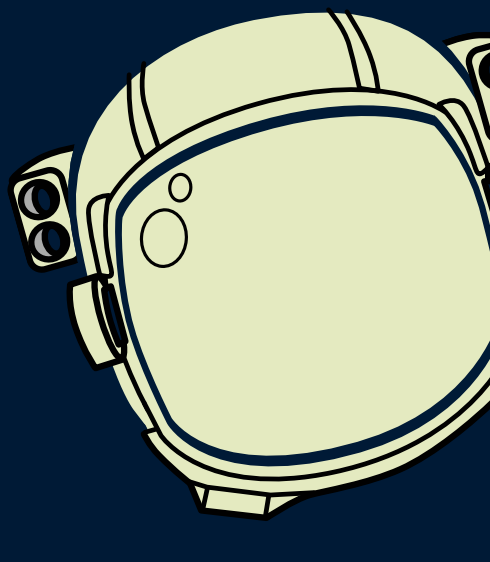
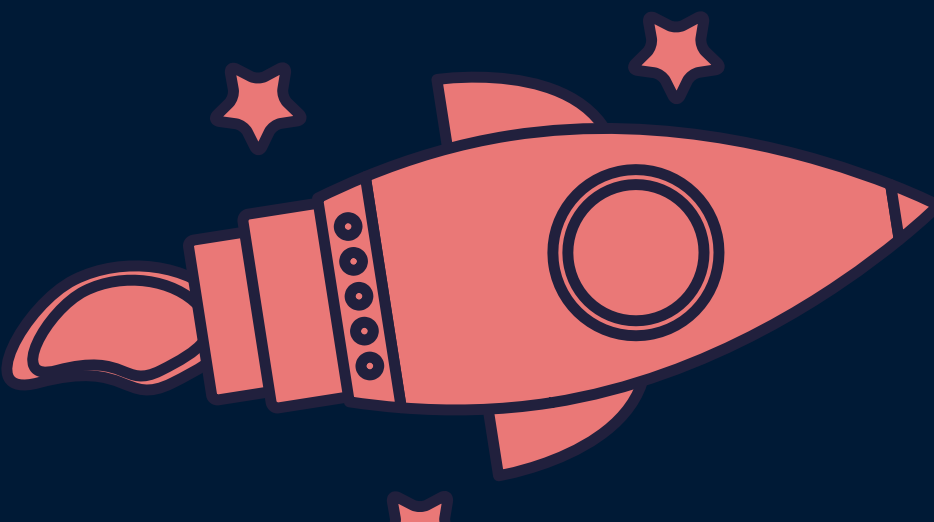
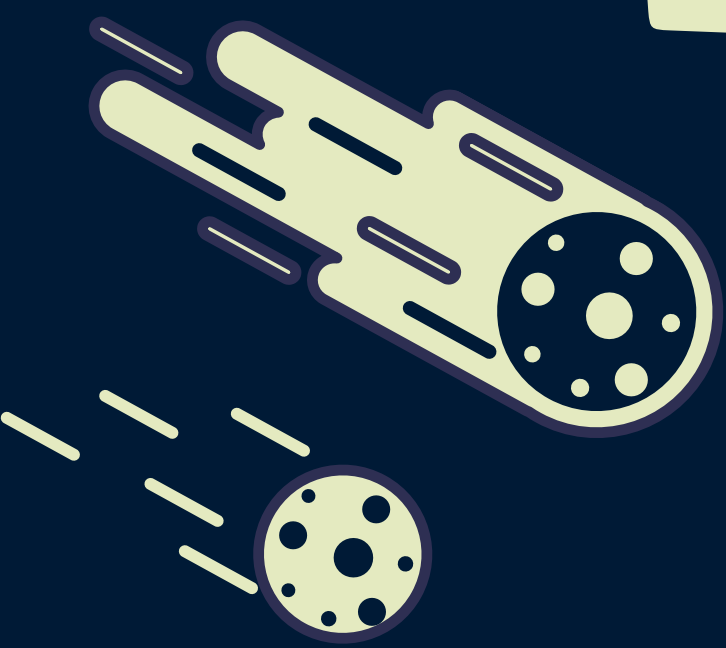
**2 x** Open Category runners-up

*\*The tour will be conducted for all 3 winners and their parties together (subject to COVID-19 restrictions). A date and time will be arranged between the winners and the NTU Satellite Research Centre after winners have been announced.*

## *Women in Space*

"Women in Space" is the theme for this year's World Space Week! A special prize will be awarded to one entry among all submissions that best exemplifies this theme.

*See 'How to Participate' for more details.*



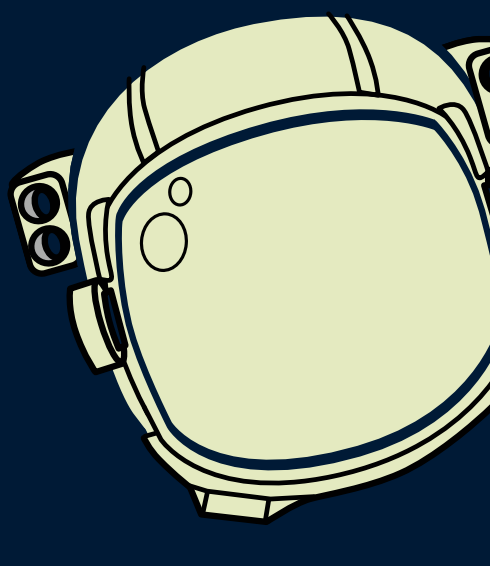
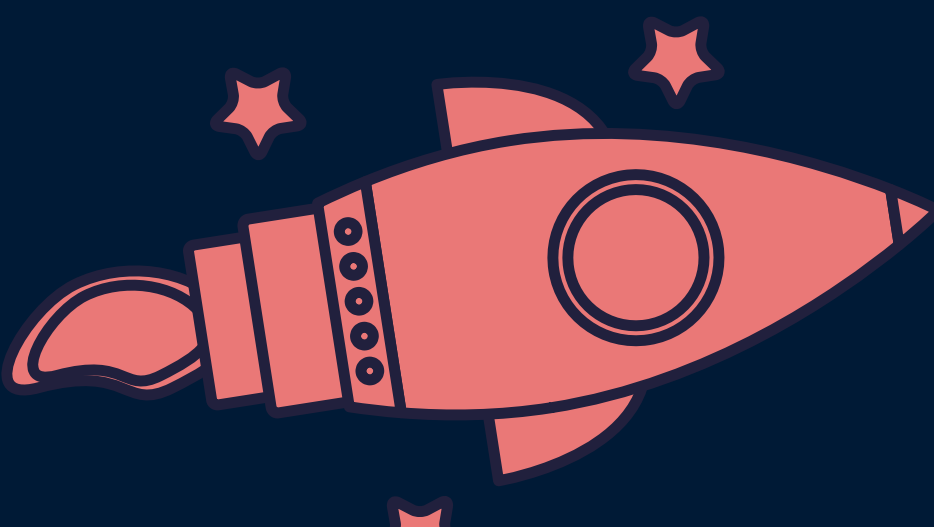
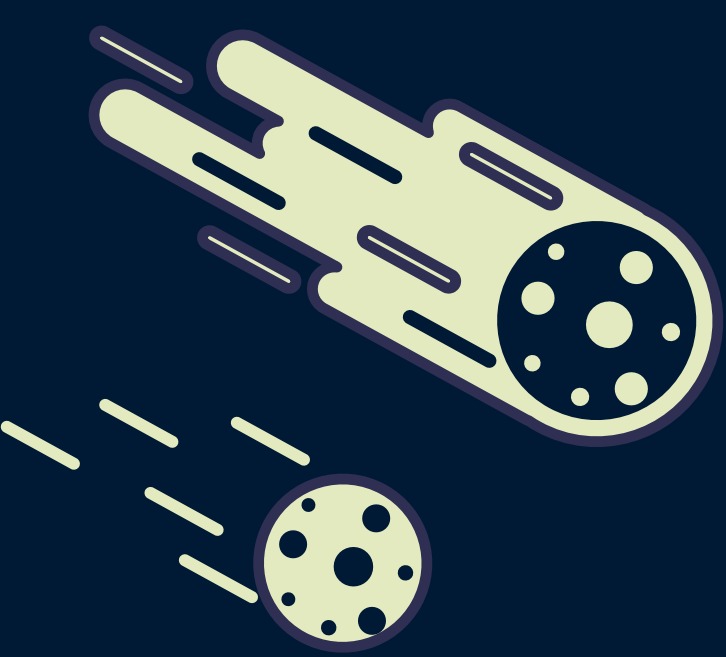


# HOW TO PARTICIPATE:

---

## Junior Category

- Pick your favourite spacecraft from NASA's DIY Spacecraft Models page (<https://science.nasa.gov/toolkits/diy-paper-spacecraft-models>) and follow the instructions to construct your model. *\* You will need access to your own printer*
- Take 4 photos of your model:
  - Front view
  - Back view
  - Top view
  - Creative Shot:
    - Take a picture of your paper model in an interesting and creative setting – Among Us? With a mini Lego engineer? Hurtling toward the Sun? Being visited by Ms. Frizzle in the Magic School Bus? Let the universe be the limit of your imagination!
- Write a 50-word description of the inspiration for your Creative Shot.
- To be eligible for the *Women in Space* prize, your Creative Shot and 50-word description must feature a female. It may be an inspirational historical or present-day figure, or it may represent your/your female friends and family's aspirations in Space.
- Go to <https://go.gov.sg/wsw2021> to submit your entry by 6pm on 10 Nov 2021.



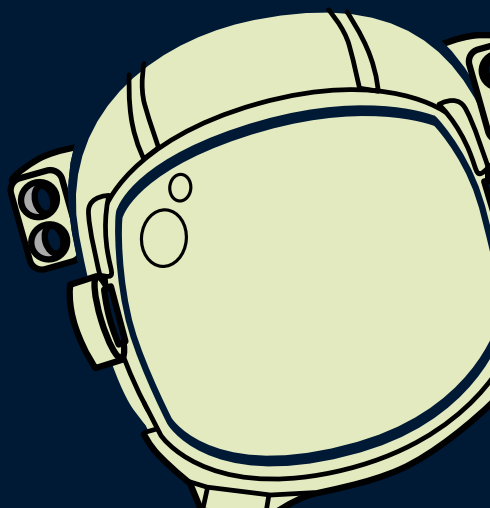
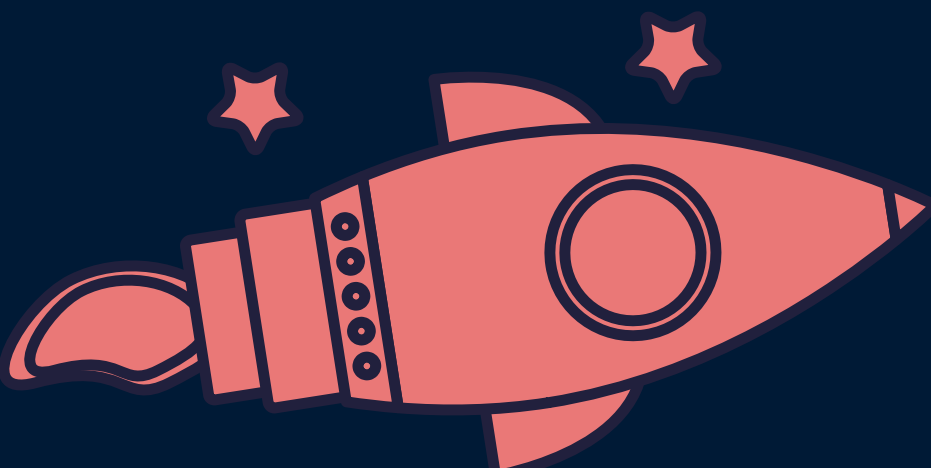
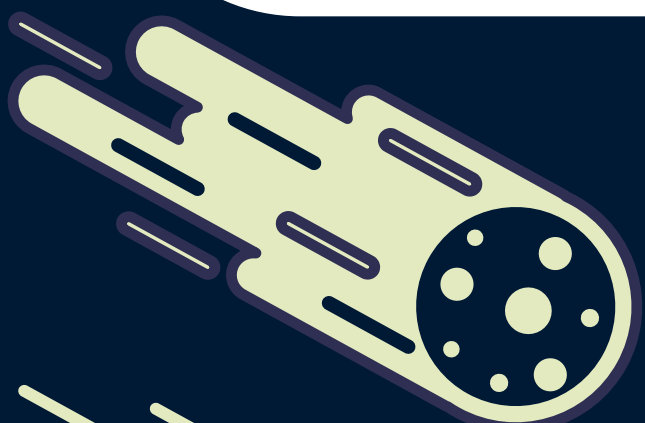


# HOW TO PARTICIPATE:

---

## Open Category

- Visit one of the following local satellite engineering centres' websites, and pick your favourite locally-built satellite:
  - NTU's Satellite Research Centre (SaRC) - <https://www.ntu.edu.sg/sarc/research-capabilities/satellites>
  - NUS's Satellite Technology and Research Centre (STAR) - <https://online.ece.nus.edu.sg/star/programmes.html>
  - ST Engineering Satellite Systems - [https://www.agilspace.com/pdf/TeLEOS-1\\_Brochure.pdf](https://www.agilspace.com/pdf/TeLEOS-1_Brochure.pdf)
- Build your own model of your chosen satellite based on images on the websites. You can familiarize yourself with the typical components of a satellite (antennae, solar panels, payloads etc.) by visiting NASA's DIY Spacecraft Models page (<https://science.nasa.gov/toolkits/diy-paper-spacecraft-models>). *\* You will need access to your own printer*
- Take 4 photos of your model:
  - Front view
  - Back view
  - Top view
  - Creative Shot:
    - Take a picture of your paper model in an interesting and creative setting - Among Us? With a mini Lego engineer? Hurling toward the Sun? Being visited by Ms. Frizzle in the Magic School Bus? Let the universe be the limit of your imagination!
- Write a 50-word description of the inspiration for your Creative Shot.
- To be eligible for the *Women in Space* prize, your Creative Shot and 50-word description must feature a female. It may be an inspirational historical or present-day figure, or it may represent your/your female friends and family's aspirations in Space.
- Go to <https://go.gov.sg/wsw2021> to submit your entry by 6pm on 10 Nov 2021.





# HOW TO PARTICIPATE:

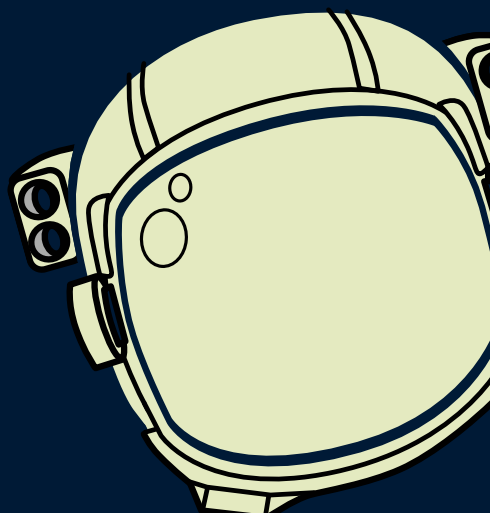
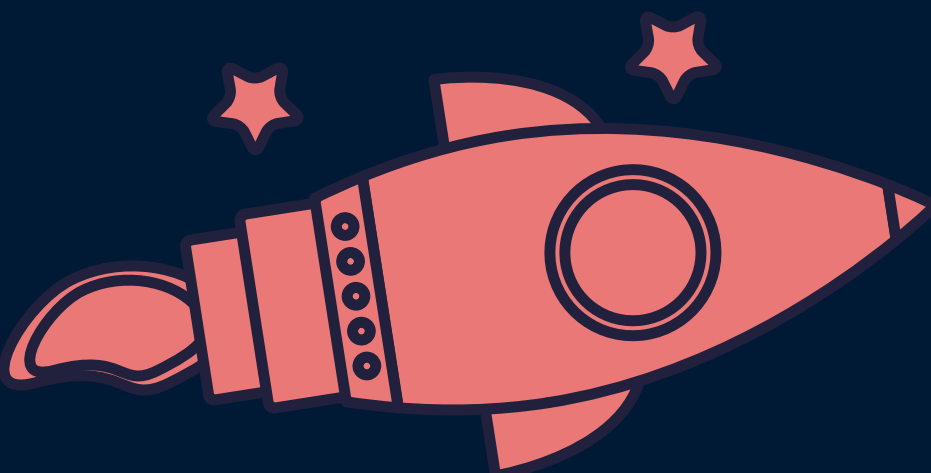
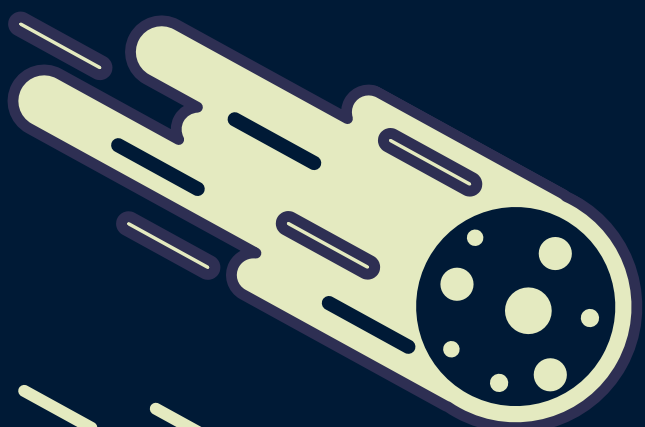
---

## Eligibility

- Junior category
  - participants must be born on or after 1st January 2009
  - participants cannot be immediate family members of employees of OSTIn or NTU SaRC
  - participants must be Singapore citizens or permanent residents
- Open category
  - participants cannot be employees or immediate family members of employees of OSTIn or NTU SaRC
  - participants must be Singapore citizens or permanent residents

## Judging

- Entries will be judged by representatives of the Office for Space Technology and Industry (OSTIn).
- Judges' decision is final.





## *Office for Space Technology and Industry (OSTIn)*

OSTIn is Singapore's national space office. OSTIn is responsible for a) nurturing the development of space technologies to serve national imperatives, b) growing a globally competitive space industry in Singapore, c) fostering an enabling regulatory environment for Singapore's space activities, d) establishing international partnerships and contributing to the development of multilateral norms on space, and e) supporting the development of Singapore's future workforce through space-based STEM outreach.

## *NTU Satellite Research Centre (SaRC)*

Satellite Research Centre (SaRC) is the birthplace of Singapore's first locally-designed satellite, X-SAT. Since the 1st launch of XSAT in 2011, SaRC has designed, built, tested and operated 9 satellites (as of 2020). Among them are satellites as small as 1U size (10cmx10cmx10cm), which communicate with SaRC's UHF/VHF ground station, and satellites as large as 100 kg which utilize a state-of-the-art 24/7 automated mission control station.

SaRC houses various R&D programmes which push for new Science and Technology breakthroughs with various interdisciplinary experts. It also hosts student programmes for undergraduate and postgraduate students to be exposed to the practical aspects of the satellite and space environment.

