

## **Sparse Representation of Multiscale Data and Images (14 - 17 December 2009)**

### **Circular for Speakers**

#### **1. Venue:**

##### **Nanyang Executive Center (See attached NTU map)**

Nanyang Technological University  
60 Nanyang View, Singapore 639673  
Tel: (65) 6790 6699/ 6790 6697 Fax: (65) 6794 7860  
Website: [www.ntu.edu.sg/nec](http://www.ntu.edu.sg/nec)  
Email: [ntu-nec@ntu.edu.sg](mailto:ntu-nec@ntu.edu.sg)

NEC opens 24 hours. You can check in with your passport at the front desk and mention the conference name. Your room access card and internet account will be issued upon check-in.

More information can be found at

<http://www.ntu.edu.sg/ias/upcomingevents/SRMDI09/Pages/LocalInformation.aspx>

#### **Getting there**

##### Taxi

The most convenient way of getting to NTU from Changi Airport is by taxi. The taxi stand at Changi Airport is located just outside the Arrival hall on Level 1 in Terminal 1, and located at the end of the Arrival Hall on Level 1 in Terminal 2 (South Wing). Have the taxi driver take East Coast Parkway (ECP), then Pan Island Expressway (PIE) going towards Tuas, and exit the expressway at Exit 36 Jalan Bahar and keep right. Turn right to Jalan Bahar and soon you will see a white road sign leading to the university. Turn left into Nanyang Avenue, and after a long drive you will reach the main gate. Continue along Nanyang Avenue, and immediately after the bus-stop, turn left into Nanyang Crescent. Drive up along Nanyang Crescent, and turn in to the first road on your right and you will notice the prominent Centre. (See map attached.)

The ride will cost you from S\$35 to S\$40 depending on time of traveling, and it will take 30-40 minutes in smooth traffic. Alternatively, at the Changi Airport taxi stand you can take a limousine taxi, which will cost S\$45 flat (+\$10 for midnight surcharge if time of arrival is after midnight) to any part of Singapore. This cab has a bigger capacity and it is somewhat more comfortable than a regular cab.

Taxis charge according to the meter. A surcharge of S\$3.00 - S\$5.00 is payable for all trips originating from Changi Airport. Details of other surcharges may be found at the taxi stand or posted on the door of the taxis.

#### **2. Registration**

Registration booth will be just outside Lecture Room 1.

Registration starts from 7.30am to 8.30am. Please note that the opening ceremony will begin at 8.40am on 14 Dec 2009.

### **3. Food**

Morning and afternoon tea breaks will be provided. Participants are advised to have lunch at any restaurants and canteens within NTU. Information on eateries and transport services will be provided at the conference.

**If you have any dietary restriction, kindly let us know as soon as possible so we may make alternative arrangements.**

There will be a banquet for invited speakers and paying participants on 14 Dec 2009. Transport between NEC and banquet venue will be provided.

### **4. Scanned Passport (For invited speakers only)**

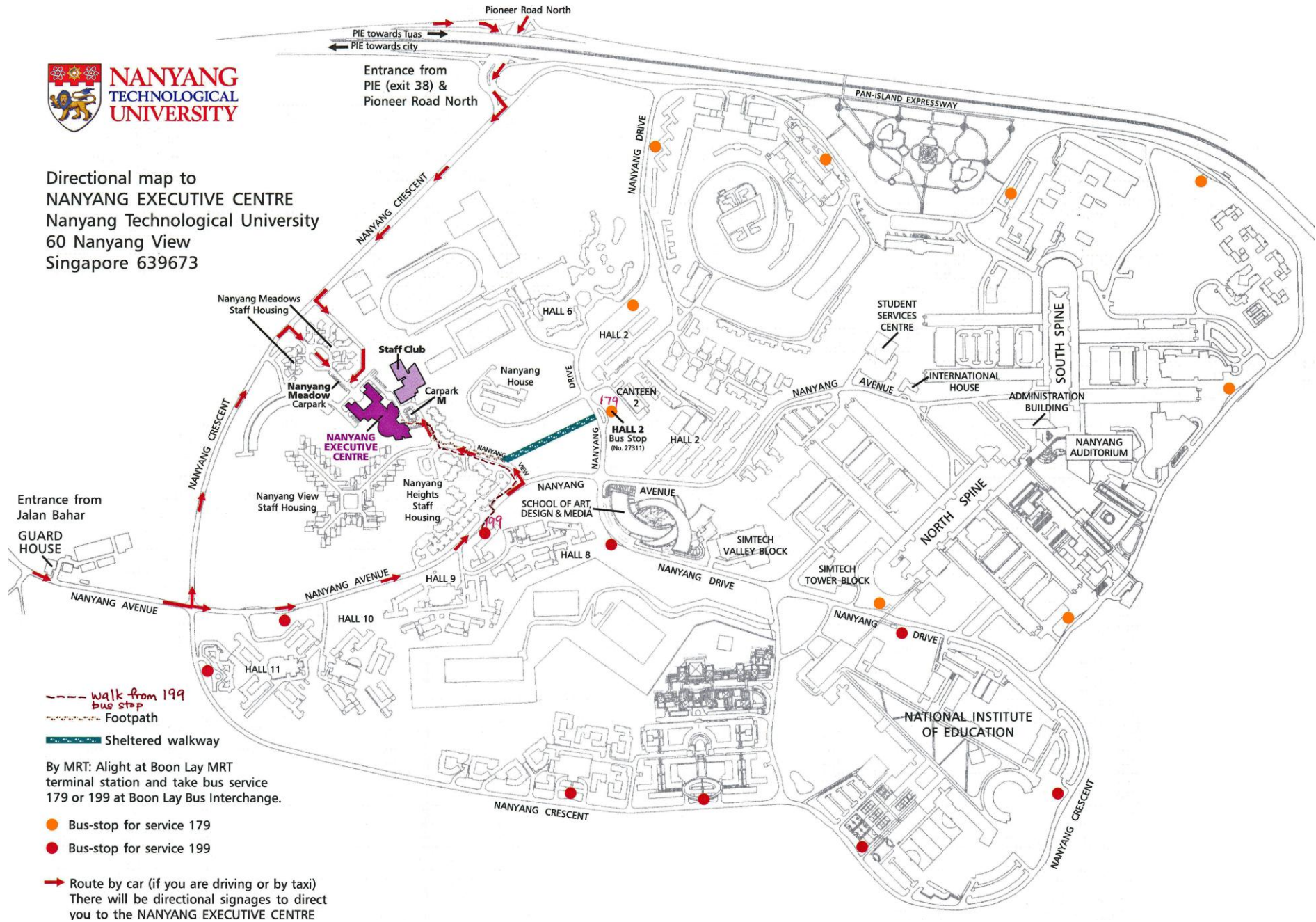
For processing of per diem, all invited speakers are requested to send us a scanned copy of your passport and mailing address. Alternatively, speakers may bring along your passport for us to make a copy during registration.

### **5. Flight Receipt (For invited speakers only)**

For reimbursement of air ticket, kindly furnish us with the original flight receipt upon arrival, or email to us if it is an e-ticket/receipt. Please be informed that it will take at least 3 weeks for the processing of reimbursement.



Directional map to  
**NANYANG EXECUTIVE CENTRE**  
 Nanyang Technological University  
 60 Nanyang View  
 Singapore 639673



- - - walk from 199 bus stop
- · - · - Footpath
- Sheltered walkway

By MRT: Alight at Boon Lay MRT terminal station and take bus service 179 or 199 at Boon Lay Bus Interchange.

- Bus-stop for service 179
- Bus-stop for service 199

→ Route by car (if you are driving or by taxi)  
 There will be directional signages to direct you to the NANYANG EXECUTIVE CENTRE