



NANYANG
TECHNOLOGICAL
UNIVERSITY

NTU

**AT A
GLANCE**
2011

College of Engineering
College of Science
College of Humanities,
Arts, & Social Sciences
Nanyang Business School
National Institute of
Education
S Rajaratnam School of
International Studies
Earth Observatory of
Singapore
Singapore Centre on
Environmental Life
Sciences Engineering 
Lee Kong Chian School
of Medicine

*Singapore's
fastest-growing
research university*

Contents

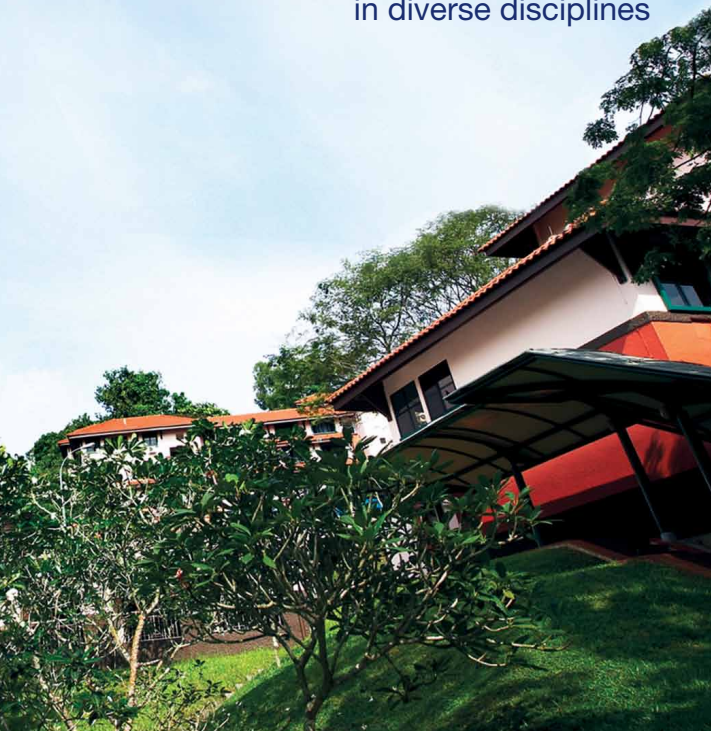
About NTU	2
Research	11
Undergraduate Education	19
Graduate Education	21
Degree Programmes	22
Executive and Continuing Education	30
Students	31
Faculty and Staff	36
Alumni	37



Vision & Mission

A great global university
founded on science
and technology

Nurturing creative and
entrepreneurial leaders
through a broad education
in diverse disciplines



ABOUT NTU

PROFILE

- Singapore's leading science and technology university
- One of the two largest public universities in Singapore
- Youngest university in the top 1% of the world's best universities*
- Research-intensive with lion's share of competitive funding in Singapore in 2010
- More than S\$830m for sustainability research
- S\$359m in competitive research grants in FY2009/10
- Four colleges with 12 schools; four autonomous institutes, including two national Research Centres of Excellence with S\$270m in government funding
- Biggest engineering college in the world
- Upcoming medical school with Imperial College London
- Largest campus in Singapore at 200 hectares, with 16 halls of residence
- Graduate school in one-north, Singapore's science and tech hub
- Third campus to be built in Novena, Singapore's medical district
- NTU Tianjin College in China (by 2013)
- First Kauffman Campus outside the United States for entrepreneurship
- Joint PhD programmes with top universities
- About 23,480 undergraduates and 10,000 graduate students from 72 countries
- About 3,290 faculty and research staff from 72 countries
- More than 145,000 alumni worldwide

* *Quacquarelli Symonds (QS) World University Rankings 2010*

History

Established in 1991, Nanyang Technological University (NTU) has roots that go back to 1955 when its predecessor institution, Nanyang University, was set up. Today, NTU is a research-intensive institution bridging the best of the East and the West, and the youngest university in the Top 100 ranked in the QS World University Rankings 2010.



Yunnan Garden campus



NTU@one-north campus



Novena campus (heritage building, part of medical school)

Joint Medical School with Imperial College London

Combining NTU's core strengths in engineering and business with Imperial College London's world-renowned medical expertise, the **Lee Kong Chian School of Medicine** will prepare the brightest minds to meet the demands of 21st-century healthcare and introduce innovations to medical education in Singapore. The school received philanthropic support of more than S\$400m in January 2011.

A Rich Heritage: National Monuments on Campus

Gazetted as a national monument in 1998 and now housing the **Chinese Heritage Centre**, the beautifully restored former Nanyang University Administration Building, with a distinct oriental character, overlooks the historical Yunnan Garden.



The **Nanyang University Memorial** and original **Nanyang University Arch** were also declared national monuments of Singapore in 1998.

ABOUT NTU

Deep Links with Asia, Global Connections

NTU's international outreach is broad and strong and includes more than 400 academic and research partnerships with institutions across the United States, Europe and the Asia-Pacific, particularly China and India.

NTU is one of the seven founding members of the Global Alliance of Technological Universities, a network of top technological universities united in addressing global issues through leading-edge science and technology.

Global Alliance of Technological Universities

- California Institute of Technology
- Eidgenössische Technische Hochschule Zürich
- Georgia Institute of Technology
- Imperial College London
- Indian Institute of Technology Bombay
- Nanyang Technological University
- Shanghai Jiao Tong University



Governance

The 19-member NTU Board of Trustees is a key pillar of university governance and sets the broad strategic directions for the university. The President of the University is the principal executive. He is assisted by the Provost, Senior Associate Provost, Associate Provosts, Director (National Institute of Education), College Deans, School Chairs and heads of administrative departments/institutes.

Chancellor

The President of the Republic of Singapore is the Chancellor of the university.

Colleges

College of Engineering

The largest engineering college in the world with six schools focused on technology and innovation; research output among the top four in the world

Schools:

- School of Chemical and Biomedical Engineering
- School of Civil and Environmental Engineering
- School of Computer Engineering
- School of Electrical and Electronic Engineering
- School of Materials Science and Engineering
- School of Mechanical and Aerospace Engineering

College of Science

Award-winning faculty, Olympiad medal winners and world-class laboratories; offers Singapore's first double degree programme in Biomedical Sciences and Traditional Chinese Medicine in partnership with Beijing University of Chinese Medicine

ABOUT NTU

Schools:

- School of Biological Sciences
- School of Physical and Mathematical Sciences

Nanyang Business School (College of Business)

The Nanyang MBA is the first Singapore MBA to break into the top 25 in the Financial Times' Top 100 full-time Global MBA Rankings; the school is one of only three in Asia to be awarded both the EQUIS (European Quality Improvement System) and AACSB (Association to Advance Collegiate Schools of Business) accreditations

College of Humanities, Arts, & Social Sciences

Home to the Wee Kim Wee School of Communication and Information, a top communication school in Asia; a fast-growing humanities and social sciences school with distinctive niches of excellence; and Singapore's first professional art school offering degree courses in art, design and interactive digital media

Schools:

- School of Art, Design and Media
- School of Humanities and Social Sciences
- Wee Kim Wee School of Communication and Information



Autonomous Institutes

National Institute of Education

Singapore's main teacher-training institute that provides educational consultancy to countries from Abu Dhabi to Vietnam



S Rajaratnam School of International Studies

An autonomous graduate institution of NTU and a world authority on strategic studies and security research; ranked first among university-affiliated think tanks in Asia and 13th globally in the 2010 Global Go-To Think Tank Rankings

Lee Kong Chian School of Medicine

Combines NTU's core strengths in engineering and business with Imperial College London's world-renowned medical expertise; first intake of 50 students in 2013

Earth Observatory of Singapore

Established in 2008 with S\$150m in state funding and dedicated to hazards-related earth science; a leading resource centre in understanding environmental threats

Singapore Centre on Environmental Life Sciences Engineering

Set up in 2010 to harness microbial biofilms for water and environmental sustainability; awarded S\$120m in government funding over 10 years

Home to Top Students, Faculty and Researchers

NTU develops leaders who are multidisciplinary and multicultural. The university:

- counts among its students top scholars and Olympiad medallists from the region and beyond

ABOUT NTU

- has global academic leaders such as NTU President-Designate Prof Bertil Andersson, a former Trustee of the Nobel Foundation and the former Chief Executive of the European Science Foundation; eminent geologist Prof Kerry Sieh from Caltech; renowned neotectonicist Prof Paul Tapponnier from the University of Paris; Prof Chris Newhall, formerly of the US Geological Survey; MIRALab founder Prof Nadia Thalmann from the University of Geneva; Prof Vibeke Sorensen from the University at Buffalo, New York; Prof Pär Nordlund from Karolinska Institutet; Prof Staffan Kjelleberg from the University of New South Wales; Prof Yehuda Cohen from Hebrew University of Jerusalem; and 1992 Chemistry Nobel laureate Prof Rudolph Marcus, the Arthur Amos Noyes Professor of Chemistry at California Institute of Technology
- regularly welcomes Nobel laureates and eminent academics brought in under its visiting professorship and fellowship schemes



Recruiting the Best

Exceptional young international faculty from diverse disciplines are drawn into the university's academic and research enterprise through the **Nanyang Assistant Professorship** scheme, which awards grants of up to S\$1m over three years for cutting-edge research, as well as the prospect of tenure-track appointments.

Outstanding young researchers may also apply for prestigious fellowships in Science and Technology under a scheme promoted by the Singapore National Research Foundation, which could lead to an offer of a faculty position at NTU

and research funding of up to US\$2m over five years. NTU is actively recruiting bright post-doctorates as well as PhD students from all over the world. PhD students can look forward to new joint PhD programmes with prestigious overseas universities, and the option of attractive scholarships such as the **Nanyang President's Graduate Scholarship**, **NTU Research Scholarship**, Singapore International Graduate Award and sponsorships from various funding agencies and industry.

Residential Community

The Yunnan Garden campus provides a serene backdrop to 16 Halls of Residence housing some 9,200 students and a variety of lodging options, including accommodation for more than 600 graduate students. All new undergraduates are guaranteed a place in a hall of residence.

About 38% of full-time undergraduates and 81% of international undergraduates live on campus. Some 600 housing units are set aside for international academics and staff members.

A Town Called NTU

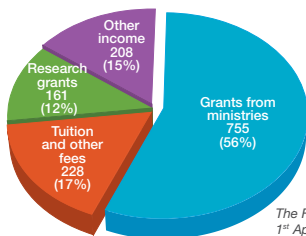
- NTU has the largest on-campus residence infrastructure in Singapore and hosted the inaugural Youth Olympic Games in 2010.
- About 34% of NTU's full-time student population and 57% of faculty and staff members call NTU home.



ABOUT NTU

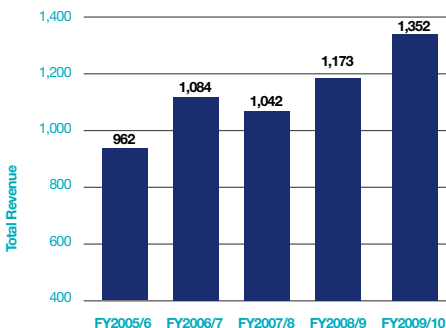
University Budget

Sources of Revenue for FY2009/10 (in S\$m)



The Financial Year (FY) starts on 1st April and ends on 31st March of the following year.

Total Revenue for FY2005/6-FY2009/10 (in S\$m)



Academic Year

Semester 1: August-December

Semester 2: January-May

Special Terms: May-July

RESEARCH

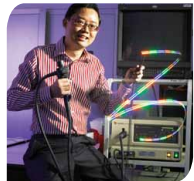
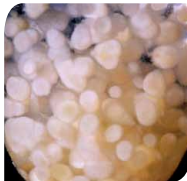
World-class Research

Research is carried out within and across the colleges and institutes, including more than 63 research centres, and often through strategic partnership programmes. This sustained interdisciplinary effort has resulted in many scientific breakthroughs and headlining technologies.

As the main science and technology university in Singapore, NTU makes significant contributions to the nation's renewed drive for research and innovation spearheaded by the Singapore National Research Foundation (NRF). This involves a five-year investment in biomedical sciences, environmental and water technologies, and interactive and digital media – areas NTU is strong in.

Key Research Initiatives

- Earth Observatory of Singapore
- Singapore Centre on Environmental Life Sciences Engineering
- Nanyang Environment & Water Research Institute
- Institute for Media Innovation
- Energy Research Institute@NTU
- Biomedical Structural Biology Laboratory



RESEARCH

Funding Success

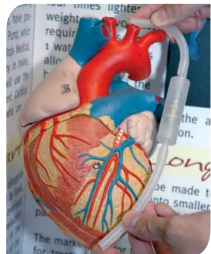
From April 2005 to March 2010, NTU won more than S\$1b in competitive research funding. In FY09, the most significant external competitive research grant received was the award of S\$120m to NTU for the establishment of the Singapore Centre on Environmental Life Sciences Engineering, a Research Centre of Excellence.

Five Peaks of Excellence

NTU has unveiled its five-year strategic plan, NTU 2015, which maps out how it will become a great global university by 2015. Under this, NTU will build on its current strengths and heritage to make its mark internationally in five areas – sustainability, healthcare, new media, the best of the East and West, and innovation.



The areas leverage NTU's diverse strengths, particularly its longstanding expertise in engineering and business, and the interfaces these have with various disciplines such as healthcare, science and the humanities. With more than S\$830m of research funding in the area of sustainability, NTU is already a global leader in this area.



NTU is setting up a medical school jointly with Imperial College London to meet the challenges of ageing and healthcare in Singapore. The Lee Kong Chian School of Medicine will pioneer medical innovations and bring about enhancements to the healthcare system.

Some of Our International Partners

Europe

- Centre National de la Recherche Scientifique
- Eidgenössische Technische Hochschule Zürich
- Fraunhofer-Gesellschaft
- Imperial College London
- Karolinska Institutet
- Technische Universität München

North America

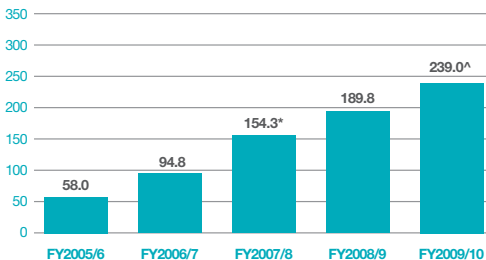
- California Institute of Technology
- Carnegie Mellon University
- Cornell University
- Georgia Institute of Technology
- Massachusetts Institute of Technology
- Stanford University
- University of California, Berkeley
- University of North Carolina at Chapel Hill

Asia and beyond

- Hebrew University of Jerusalem
- Indian Institute of Technology Bombay
- Peking University
- Shanghai Jiao Tong University
- Technion-Israel Institute of Technology
- Tokyo Institute of Technology
- University of New South Wales
- Waseda University

RESEARCH

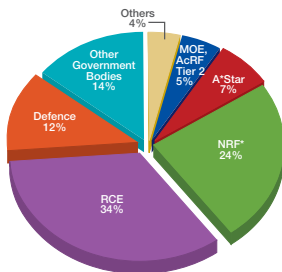
Competitive Research Grants Awarded (in S\$m)



* Excludes S\$150m for the Earth Observatory of Singapore

^ Excludes S\$120m for the Singapore Centre on Environmental Life Sciences Engineering

Breakdown of S\$359m Competitive Research Grants Awarded (FY2009/10)



*Note: For NRF, the contribution from CRP awards is 11% (S\$39.8m)

MOE AcRF:

The MOE Academic Research Fund (AcRF) Tier 2 funds research projects on a competitive basis across Singapore-based universities (NTU, NUS, SMU). Two grant calls are planned for each year, in February and August.

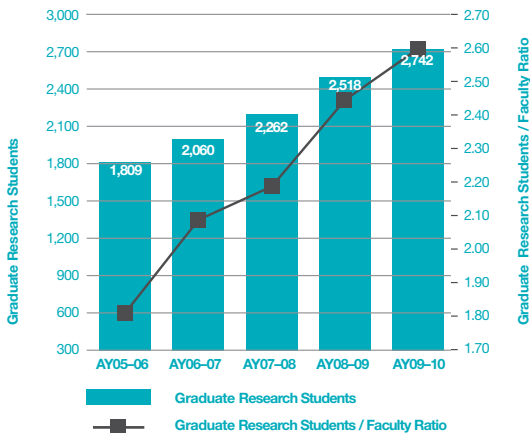
NRF:

The National Research Foundation's (NRF) Competitive Research Programme (CRP) Funding Scheme aims to encourage high-impact research and enhance intellectual and human capital development for R&D. The CRP scheme funds a broad base of research ideas at the programme level through a competitive bottom-up approach and offers funding support of up to S\$10m per programme over three to five years.

RCE:

Research Centres of Excellence (RCEs) are long-term investments, involving careful selection of world-class talent and aimed at developing a virtuous cycle of research excellence in our universities. The NRF and the Ministry of Education (MOE) will co-fund the establishment of a selected number of RCEs.

Graduate Education



Creating Excellence

The CREATE (Campus for Research Excellence and Technological Enterprise) programme is an initiative of Singapore's National Research Foundation to foster ties between elite universities and Singapore-based institutions.

TUM-CREATE Centre for Electromobility: Set up by NTU and Technische Universität München to develop sustainable transport solutions, including electric cars for Asian cities.

BEARS (Berkeley Education Alliance for Research in Singapore): A tie-up between NTU and the University of California, Berkeley, to enhance the efficiency of buildings in the tropics.

Collaboration between NTU, Ben-Gurion University of the Negev and Hebrew University of Jerusalem: A CREATE alliance focused on using nanomaterials to improve energy and water management technologies.

RESEARCH

Strong Links with Industry

NTU has a long record of cooperation with industry and is a partner of choice for leading commercial organisations and government research institutions.

Strategic Priority Areas

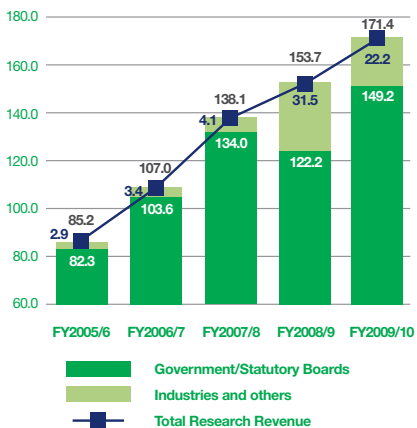
- Earth Sciences
- Clean Energy
- Water Technology
- Environmental Engineering
- Infocommunications Technology
- Biomedical Engineering
- Structural Biology
- Interactive and Digital Media
- Chinese Culture and Language
- Nanotechnology and Nanoscience
- Microelectronics
- Human Language Processing
- Financial Engineering and Risk Management
- Security
- Research and Pedagogy in Education

Major Industrial Research Partners

- Det Norske Veritas
- European Aeronautic Defence and Space Company
- Fraunhofer-Gesellschaft*
- Infineon
- Nitto Denko Corporation
- Robert Bosch*
- Rolls-Royce*
- Sembcorp Industries
- Siemens Pte Ltd
- Thales*
- Toray Industries Inc*

**with laboratories/centres at NTU*

Research Revenue (in S\$m)



SIGNIFICANT RESEARCH ACHIEVEMENTS



- The first Antenna-in-Package solution used in Low Temperature Co-fired Ceramic technology for producing single-chip, 60 GHz radios



- A revolutionary Assisted Celluloid Animation software (CACAni) that automates the labour-intensive process of creating animation sequences



- A compound originally developed to kill cancer cells that can be used against malaria, paving the way for the development of the first malaria vaccine



- More accurate regional earthquake and tsunami forecasts based on the leading-edge study of corals off Sumatra, Indonesia

- An energy-efficient compressor for heating and cooling systems with design features that promise significant fuel savings



- A new, environmentally-friendly super chip that consumes 30 times less energy and runs seven times faster than current technologies

- A nanotechnology application for membrane filtration that eliminates micro-organisms and does not produce waste during water purification



- Singapore's first Global Positioning System (GPS) film and software, for new ways of watching movies on the go

- Comprehensive analysis of the interactions between religion and technology in Asia today, elucidating the complex relationships between spirituality, social and identity formation, sovereignty and power

- MobiTOP, a system for use on the Web and mobile phone that supports social tagging of objects and people in education and tourism applications

UNDERGRADUATE EDUCATION

An NTU education is broad and includes residential living, international experience and an early immersion in business and industry. NTU offers 34 single bachelor's degree programmes. Students can also choose from 15 double degree programmes and four integrated programmes.

The key components of **The NTU Undergraduate Experience** include:

Undergraduate Research Experience on Campus (URECA)

For students with a passion for research; gives access to more than 1,200 projects campus-wide.

CN Yang Scholars Programme

Prepares science and engineering talents for top graduate schools.

Renaissance Engineering Programme (REP)

An elite fully-residential multidisciplinary programme that aims to groom outstanding CEOs and CTOs; students graduate with a Bachelor of Engineering Science degree and an MSc in Technology Management in 4.5 years

iGlobal

An integral part of the complete educational experience at NTU that provides a series of global programmes for undergraduates to "get ahead" by venturing overseas for a semester or two. iGlobal includes:



UNDERGRADUATE EDUCATION

- **Global Immersion Programme (GIP)**
Covers 35 destinations in ten countries. Students study and work for up to a year in some of the world's most dynamic economies.
- **International Student Exchange Programme (INSTEP)**
A programme conducted with 150 partner universities in more than 30 countries. Students can spend up to a year overseas.
- **Global Summer Studies (GSS)**
A short-term study-and-play programme that lets students make the most of their university vacations by travelling overseas and earning academic credits at prestigious universities.
- **Global Discovery Programme (GDP)**
A four-week study-and-visit programme that aims to give students a broad understanding of emerging economies such as Vietnam, India and the Middle East.
- **Overseas Attachment**
International work experience that widens students' perspective of the working world and enhances their employability and career mobility.

A total of 1,574 students participated in GIP/GDP/GSS/INSTEP in AY2009-10. More information about these programmes can be found at: <http://global.ntu.edu.sg>

A range of assistance schemes is available to help students defray the cost of their overseas education.

NTU is the first university in the world to start a joint doctoral programme with Imperial College London. It has been engaging China since the 1990s and now conducts six Master's programmes for Chinese government officials, including vice-mayors.

Some Graduate Programmes with Overseas Partners

- **Joint PhD** – with Imperial College London, Technische Universität München, Karolinska Institutet, Korea Advanced Institute of Science and Technology, Technion-Israel Institute of Technology, Université de Technologie de Troyes and ParisTech Institute of Technology
- **Dual PhD** – with Carnegie Mellon University and Columbia University
- **Double MBA** – with ESSEC Business School and University of St Gallen
- **Double MBA in Management of Technology** – with Waseda University
- **Double Masters Programme (Asian Studies/International Political Economy/International Relations/Strategic Studies)** – with Warwick University
- **Dual Masters Programme – MSc in Systems and Project Management and Master of Engineering in Systems Engineering** – with Stevens Institute of Technology
- **Executive MBA (English) in Advanced Management** – with Haas School of Business, University of California, Berkeley
- **Executive MBA in Shipping, Offshore and Finance** – with BI Norwegian School of Management
- **Executive MBA (Shanghai)** – with Shanghai Jiao Tong University
- **MBA (Nanyang Fellows)** – with Massachusetts Institute of Technology and Wharton Business School
- **MSc in Manufacturing Systems & Technology** (under Singapore-MIT Alliance) – with Massachusetts Institute of Technology
- **MSc (Technopreneurship & Innovation) (English)** – with University of Washington
- **Master of Arts (Interactive Design)** – with Domus Academy
- **Master of Management in Hospitality** – with Cornell University's School of Hotel Administration
- **MSc in Aerospace Engineering/Integrated Circuit Design/Microelectronics** – with Technische Universität München
- **MSc in Communications Engineering/Power Engineering/Signal Processing** – with Wuhan University
- **MSc in Environmental Science & Engineering** – with Stanford University
- **MSc in Financial Engineering** – with Carnegie Mellon University
- **MSc in Infrastructure Engineering & Management** – with Indian Institute of Technology Bombay
- **MSc in Maritime Studies** – with BI Norwegian School of Management

DEGREE PROGRAMMES

College/ School/ Institute	Undergraduate Programmes	Graduate Programmes by Research
Engineering	[Ⓢ] Renaissance Engineering/ ^{*†} Engr and Econs/ [Ⓢ] BEng & MSc Computer Science	
School of Chemical & Biomedical Engineering	Bioengineering/ Chemical and Biomolecular Engr	Master of Engr/ PhD (Bioengineering/ Chemical & Biomolecular Engr) / Joint PhD with Imperial College London
School of Civil & Environmental Engineering	Civil Engr/ Environmental Engr/ Maritime Studies	Master of Engr/ PhD
School of Computer Engineering	[*] Business and Computing/ [Ⓢ] Business and Computer Engr/ Computer Engr/ Computer Science/ [Ⓢ] BEng (Computer Engineering) & MSc (Computer Science)	Master of Engr/ PhD
School of Electrical & Electronic Engineering	Electrical and Electronic Engr/ Information Engr and Media/ [Ⓢ] BEng (Electrical and Electronic Engineering) & MSc (Electrical and Computer Engineering)	Master of Engr/ PhD
School of Materials Science & Engineering	Materials Engr	Master of Engr/ PhD
School of Mechanical & Aerospace Engineering	Aerospace Engr/ Mechanical Engr	Master of Engr/ PhD

[Ⓢ]Double Degree Programme. Students graduate with 2 Bachelor's degrees.

[†]The Bachelor of Engineering degree awarded will be in the specific Engineering programme.

[Ⓢ]Integrated programme.

**Graduate
Programmes by
Coursework & Dissertation**

-

MSc (Civil Engr/ Environmental Engr/ Environmental Science & Engr-NEWRI/ ^Infrastructure Engr & Management/ Intl Construction Management/ ^Maritime Studies)/ Graduate Diploma (Airport Engr/ Construction Management)

MSc (Bioinformatics/ Digital Media Technology/ Embedded Systems/ ~Information Systems)

MSc (Communication Software & Networks/ Communications Engr/ Computer Control & Automation/ Electronics/ ^Integrated Circuit Design/ ^Microelectronics/ Power Engr/ Signal Processing)/ Graduate Diploma in Information-Communication Technology/ **MSc (Communications Engr/ Communication Software & Networks/ Computer Control Automation/ Electronics/ Power Engr/ Signal Processing)

-

MSc (^Aerospace Engineering/ Biomedical Engr/ Computer Integrated Manufacturing/ Human Factors Engr/ Logistics/ Mechanical Engr/ Precision Engr/ Smart Product Design/ System & Project Management)/^Dual Masters (System & Project Management)

°New undergraduate programme offered from Academic Year 2011-12.

^Joint programme with overseas university.

*** Joint education MOU with Wuhan University.*

~Programme is a collaboration between School of Computer Engineering and Wee Kim Wee School of Communication & Information.



DEGREE PROGRAMMES

College/ School/ Institute	Undergraduate Programmes	Graduate Programmes by Research
Science		
School of Biological Sciences	Biological Sciences/ *Biomedical Sciences and Chinese Medicine	Master of Science/ PhD/ Joint PhD with Karolinska Institutet
School of Physical & Mathematical Sciences	Chemistry and Biological Chemistry/ Mathematics and Economics/ Mathematical Sciences/ Physics/ Applied Physics	Master of Science/ PhD
	Sport Science and Management	-
Business	*Accountancy and Business/ Accountancy/ Business	PhD/ ^PhD (Hospitality Management)

*Double Degree Programme. Students graduate with 2 Bachelor's degrees.

^ Joint programme with overseas university.

Programme is conducted in Chinese.

♦ Award of degree is by SJTU (Shanghai Jiao Tong University) and not NTU.

**Graduate
Programmes by
Coursework & Dissertation**

-

-

-

^#EMBA (Chinese)/ ^EMBA (English)/ ^MBA-Nanyang
Fellows Programme/ NTU-Waseda Double MBA in
Management of Technology/ ♦SJTU-MBA/ Nanyang MBA
(General MBA or Specialised in Accountancy/ Finance/
Intl Business/ Intl Studies/ Knowledge Management/
Strategy/ Marketing/ Technology)/ ^Master of Management
in Hospitality/ #MSc (Finance)/ ^MSc (Financial Engineering)

DEGREE PROGRAMMES

College/ School/ Institute	Undergraduate Programmes	Graduate Programmes by Research
Humanities, Arts & Social Sciences		
School of Art, Design & Media	Digital Animation/ Digital Filmmaking/ Interactive Media/ Photography and Digital Imaging/ Product Design/ Visual Communication	-
School of Humanities & Social Sciences	[#] Chinese/ Economics/ English/ Linguistics and Multilingual Studies/ Psychology/ Sociology	Master of Arts/ PhD
Wee Kim Wee School of Communication & Information	Communication Studies	Master of Applied Science/ Master of Communication Studies/ PhD
National Institute of Education	Arts (Education)/ Science (Education)/ Education	Master of Arts/ Master of Science/ [^] Doctor in Education/ PhD

[^] Joint programme with overseas university.

[#] Programme is conducted in Chinese.

⁻ Programme is a collaboration between School of Computer Engineering and Wee Kim Wee School of Communication & Information.

**Graduate
Programmes by
Coursework & Dissertation**

^Master of Arts (Interactive Design)

#Master of Public Administration/ MA (Contemporary China)/
#MSc (Managerial Economics)/ Graduate Diploma in Translation
& Interpretation

Master of Mass Communication/ MSc (Information Studies/
~Information Systems/ Knowledge Management)/ Graduate
Diploma in Mass Communication

Master of Arts (Applied Linguistics/ Applied Psychology/
Counselling & Guidance/ Educational Management/
Instructional Design & Technology/ Social Studies)/
Master of Education/ #Master in Educational Administration/
MSc (Exercise and Sport Studies/ Life Sciences/ Mathematics for
Educators)/ Postgraduate Diploma in Education

DEGREE PROGRAMMES

College/ School/ Institute	Undergraduate Programmes	Graduate Programmes by Research
S Rajaratnam School of International Studies	-	PhD
Nanyang Technopreneurship Centre	-	-
Singapore-MIT Alliance (SMA)	-	^PhD with MIT Masters/ ^PhD with SMA Cert

[^]Joint programme with overseas university.

[#]Programme is conducted in Chinese.

^{*}Double Degree Programme. Students graduate with 2 Master's degrees.

**Graduate
Programmes by
Coursework & Dissertation**

MSc (Strategic Studies with Certification in Terrorism Studies option)/ MSc (Asian Studies/ Intl Political Economy/ Intl Relations)/ The Nanyang MBA (Intl Studies - *jointly offered with Nanyang Business School*)/ *MSc (Asian Studies/ Intl Political Economy/ Intl Relations/ Strategic Studies)/ ^Double Masters (Asian Studies/ Intl Relations/ Intl Political Economy/ Strategic Studies)

MSc (Technopreneurship & Innovation)/
*MSc (Technopreneurship & Innovation)

^NTU MSc (Manufacturing Systems and Technology) &
MIT Master of Engineering in Manufacturing

EXECUTIVE AND CONTINUING EDUCATION

NTU offers professional development courses, regional executive programmes and tailored training programmes for corporate clients through its Centre for Continuing Education (CCE). Executive classes are conducted at the university's one-north campus and at the Nanyang Executive Centre, a modern on-campus facility with 50 conference facilities and 170 guestrooms.

Besides the programmes offered by CCE, customised executive training programmes are also conducted by the Nanyang Business School, College of Engineering, College of Humanities, Arts, & Social Sciences, Centre for Excellence in Learning and Teaching, and Confucius Institute. 294 programmes were conducted in AY2008-09, and 263 programmes in AY2009-10. These programmes attracted approximately 5,200 and 7,700 participants respectively.



STUDENTS

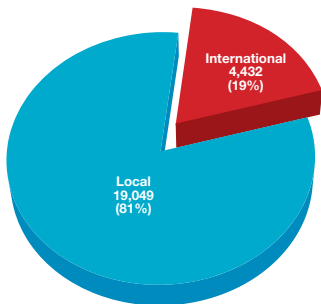
Admissions

NTU welcomes applications from qualified individuals all over the world. Please visit

<http://admissions.ntu.edu.sg>

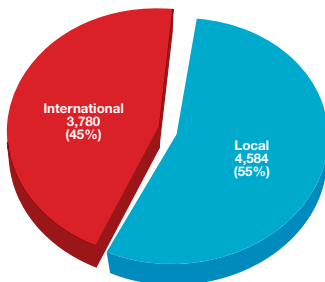
for admission details and contacts.

AY2010-11 Local vs International Undergraduate Enrolment

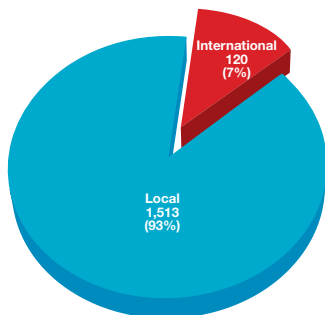


STUDENTS

AY2010-11 Local vs International Graduate Student (Coursework & Research) Enrolment



AY2010-11 Local vs International Graduate Diploma Enrolment



Enrolment by College (AY2010-11)

College	Under-graduates ²	Graduate Students ²		Graduate Diploma ²
		Coursework	Research	
Engineering	10,809	1,644	2,174	30
Science	3,785	-	567	-
Nanyang Business School	3,248	704	63	-
Humanities, Arts & Social Sciences	3,798	647	141	9
NIE	1,841	1,835	314	1,594
Others ¹	-	253	22	-
Total	23,481	5,083	3,281	1,633

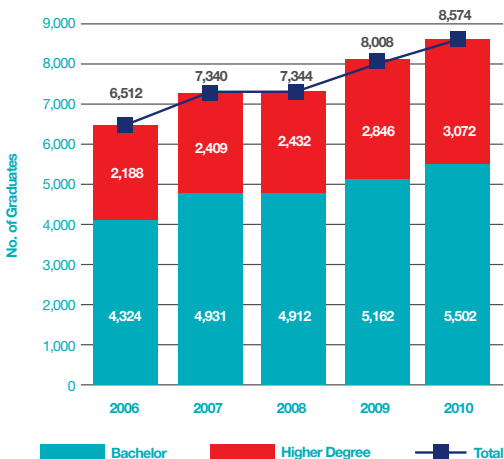
¹ Others include the Nanyang Technopreneurship Centre and S Rajaratnam School of International Studies.

² There are 619 part-time undergraduates and 29 part-time graduate diploma students. A total of 792 graduate research students and 3,114 coursework students take part-time programmes.

Figures are correct as at 27 Sep 10.

STUDENTS

Graduates from 2006 to 2010



Student Life

110 student clubs and organisations on campus

Student Services

- Psychological and professional counselling
- Career services
- Services for international students
- Sports and recreation

- Student clubs and communities
- Health care
- Medical and insurance schemes
- Internal shuttle bus service

More information on these student services can be found at:

<http://www.ntu.edu.sg/services/student-services>

<http://www.ntu.edu.sg/campus>

<http://www.ntu.edu.sg/isc> (services for international students)

Recent Achievements

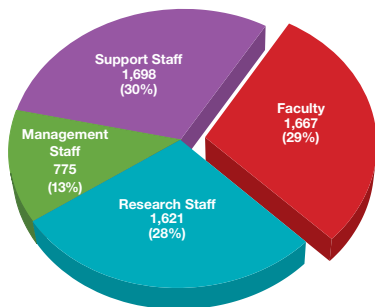
- Solar Grand Prize, Shell Eco-marathon Asia (2010)
- Best of Film, Best of Show, Best of Advertising and Best of Photography at Crowbar Awards (2010)
- Winner of the Global Investment Research Challenge in London (2009)
- Second prize, Safety Award category, Shell Eco-marathon in Germany (2009)
- L'Oréal Brandstorm National Champion (2009)
- President's Social Service Award, conferred by the President of the Republic of Singapore (2008)
- First prize in the Present Around the World Competition in London (2008)



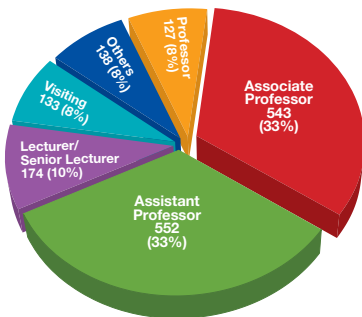
FACULTY AND STAFF

NTU has a total faculty and staff population of 5,761.

Employee Profile



Faculty Profile



Figures are as at 31 Mar 10 and exclude adjunct faculty.

ALUMNI

- 145,026 university alumni in 109 countries
- 30 overseas alumni associations in China (Beijing, Chongqing, Fujian, Guangdong, Guangxi, Hebei, Heilongjiang, Henan, Hubei, Hunan, Jiangsu, Jilin, Liaoning, Shanxi, Shaanxi, Shandong, Shanghai, Sichuan, Tianjin, Yunnan, Zhejiang, Hong Kong), India, Indonesia, Thailand, Vietnam (Ho Chi Minh City, Hanoi), the United Kingdom and the United States (East and West).
- 71% of 8,526 members of the Class of 2010 made a graduation gift to the university for future generations of students



THE NTU FLOWER

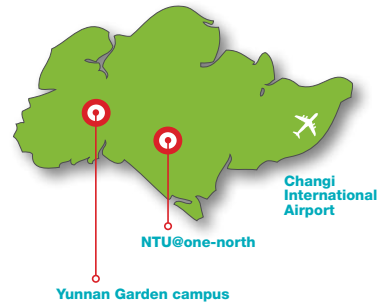


Dendrobium Nanyang is a pristine white orchid with a burst of purple at the heart of the bloom, signifying pure energy and a caring heart. The hybrid was created by students and teachers of Temasek Primary School as part of an orchid hybridisation programme developed at NTU's National Institute of Education. The exquisite white petals represent the qualities that embody the university spirit – passion, tenacity, fortitude, leadership, innovation and entrepreneurship.

LOCATION OF NTU

The Yunnan Garden campus is located in the southwestern part of Singapore, near the Jurong West Extension area. This campus is easily accessible by the *Pan-Island Expressway (PIE)*. It is also near the *Boon Lay Bus Interchange* and the *Boon Lay Mass Rapid Transit (MRT) station*.

NTU's second campus is right next to the Biopolis, Singapore's biomedical research hub, in one-north.



INAUGURAL YOUTH OLYMPIC VILLAGE



In August 2010, NTU extended a warm welcome to more than 5,000 international athletes and officials as the Youth Olympic Village for the inaugural Youth Olympic Games. The National Institute of Education was the heart of the action as the village square, while athletes stayed at halls of residence around the university. With its serene parkland surrounds, the Yunnan Garden campus has long been a place that encourages youthful talents to excel in the academic arena and beyond.



NANYANG TECHNOLOGICAL UNIVERSITY

www.ntu.edu.sg

Yunnan Garden campus
50 Nanyang Avenue
Singapore 639798
Tel: (65) 6791 1744
Fax: (65) 6791 1604

NTU@one-north campus
11 Slim Barracks Rise
(off North Buona Vista Road)
Singapore 138664

Published by the Corporate Communications Office and
Office of Academic Services

© Nanyang Technological University
Reg No 200604393R February 2011

