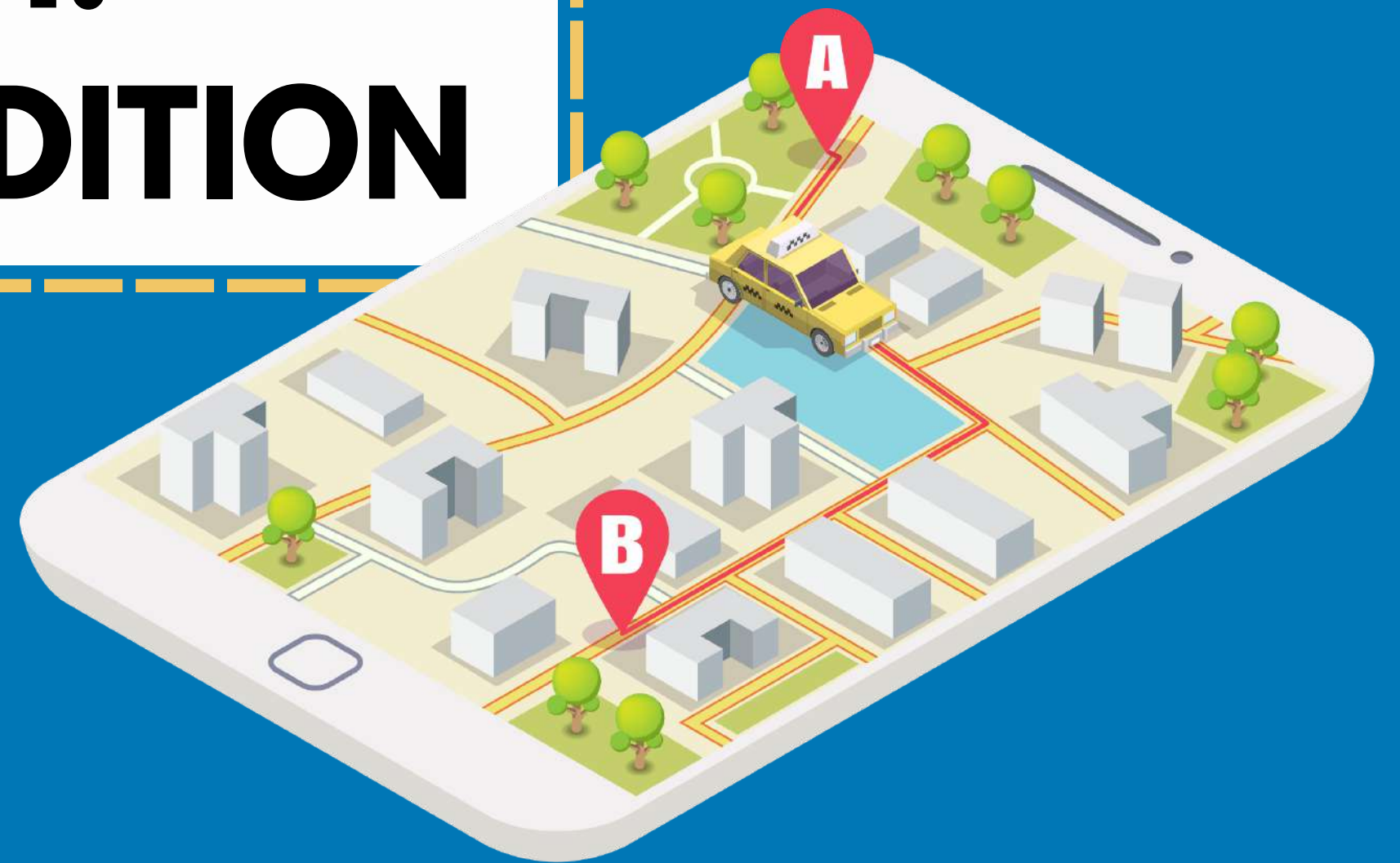


# FRESHMEN 101: INTERNATIONAL EDITION

A complete guide to NTU



**INTEGRATION**  
Student Integration Committee@ntusu

**ntusu**  
VOICE • SERVICE • VIBRANCY

# CONTENTS

Introduction

Key Points of Contact

What to do before arrival

What to do after arrival

Life in Singapore

Hall Life

School Life

Events Calendar



**INTEGRATION**  
Student Integration Committee@ntusu

**ntusu**  
VOICE • SERVICE • VIBRANCY

# Introduction

## About this booklet

We sincerely hope that you are brimming with anticipation for the remarkable journey ahead of you. Our aim is for this booklet to serve as your trusted companion, guiding you through the process of acclimating to your new home away from home. With the valuable information contained within its pages, we are confident that you will swiftly adapt to your surroundings and embrace the enriching experiences that await you. Get ready to embark on an exciting adventure, and remember that we are here to support you every step of the way.





# Introduction

## About us

The NTU Students' Union, Student Integration Committee (NTUSU-SIC) aims to facilitate the seamless integration of NTU's international student community into the vibrant NTU community at large. Our unwavering commitment to diversity underscores our role as passionate advocates for inclusivity within NTU. We wholeheartedly encourage you to connect with us whenever you require any form of assistance. Our doors are always open, and we are eager to provide the support you may need along your journey. Feel free to reach out to us via our socials:



[su-sic@e.ntu.edu.sg](mailto:su-sic@e.ntu.edu.sg)



[@ntusu.sic](https://www.instagram.com/ntusu.sic)



**INTEGRATION**  
Student Integration Committee@ntusu

**ntusu**  
VOICE • SERVICE • VIBRANCY



# Our Event Gallery

# Introduction



Meetings



Bonding Day @Marina Barrage



Integration Night 2022



Confluence 2023





# Key Points of Contact



Transitioning to a new academic environment can be challenging for any student, and this holds especially true for our international students who are faced with the prospect of adapting to an entirely unfamiliar setting.

**Therefore, who should you look for?**



# Key Points of Contact



WHO IS YOUR FIRST POINT OF CONTACT?

## OFFICE OF ADMISSIONS

Everything from the moment you get accepted to when you arrive is handled by this office. Please reach out to them for different issues via the email listed below if you have any queries.

Click [here](#) to view a complete list of contacts.

### Financial Assistance Schemes



**6790 4115**



**finaid@ntu.edu.sg**

### Matriculation



**6592 2451**



**matric@ntu.edu.sg**

### Registration of Courses



**6592 2445/2446**



**regn\_course@ntu.edu.sg**



**INTEGRATION**  
Student Integration Committee@ntusu

**ntusu**  
VOICE • SERVICE • VIBRANCY

# What to do before arrival

## Student Pass Application

1

Obtain login details for Student Pass Application [here](#).

2

Complete the Student Pass Application on the [ICA website](#).

\* You will need

- a) a digital, colored, passport-sized photograph.
- b) the passport particulars page.
- c) the signed e-Form 16.

Once you have confirmed that the information is correct, press 'confirm' and 'submit'. Pay the **S\$30** processing fee within **7 days** of completing e-Form 16. You can view your application status on the ICA website.

3

Print In-Principle Approval (IPA) letter under 'Print outcome letter'.

*\*Note: this IPA letter serves as your single-entry visa to Singapore.*

4

Provide your **Foreign Identification Number (FIN number)** at the NTU acceptance link.

5

Print **MC1** on both sides of an A4 paper and complete **Part 1**.





# What to do before arrival

*Immigration*

1

Fill in the NTU Mandatory Travel Declaration within 2 days after acceptance to NTU. Print and complete N1 and N2 forms, then upload the completed documents.

2

Prepare proof of vaccination and additional entry documents (if required).

3

Book your flight tickets.

4

Fill SG Arrival Card up to 3 days before arrival.

\* If you are not yet fully vaccinated, please refer to [this link](#) for updated information!

Click [here](#) for more information!



**INTEGRATION**  
Student Integration Committee@ntusu

**ntusu**  
VOICE • SERVICE • VIBRANCY

# What to do after arrival

## Student Pass Application

1

Book Health Screening: Book health screening at Fullerton Healthcare, NTU's on-campus medical facility the day after completing SHN (if applicable).

\*Note: Bring Passport, Acceptance Letter, Printed MC1 & MC2 documents, Overseas Vaccination Certificate & Cash for medical check-up to the health screening. Medical report will be available after 3 days.

Click [here](#) to learn more.

2

Pay Issuance Fee: Pay the issuance fee within 7 days of uploading the documents.

3

Make an e-appointment: Make an e-appointment for 'Completion of Formalities' (COF) at the ICA website. Ensure that the period of stay indicated on your passport is valid until the COF can be completed.



# What to do after arrival

## *Student Pass Application*

4

Print & Sign: Print and sign the 'Terms and Conditions of Student Pass' form.

5

Complete COF: Complete the 'Completion of Formalities' (COF) form on the ICA website by uploading your completed MC2 and signed 'T&Cs of Student Pass' form. Please do so one month before your IPA expiry date.

6

Provide Student Pass Details: Provide your Student Pass details to NTU by uploading a scanned copy here.

Need more details regarding matriculation and immigration procedures? You can refer to this list of [important dates](#) to check if your preparations are on track.

Stay tuned for any updates on university-wide activities via the [freshmen portal](#).



**INTEGRATION**  
Student Integration Committee@ntusu

**ntusu**  
VOICE • SERVICE • VIBRANCY



# Life in Singapore

## Opening Bank Account



### 1. Essential items needed to open an bank account

#### Identification Document

- Provide a valid passport (biodata)
- For Malaysian - Provide front and back of Malaysian IC

#### Proof of Study in Singapore

- Student pass (includes In-Principle Approval by ICA)
- Acceptance letter from school (restricted to official letters from educational institutions or schools under the purview of the Council for Private Education of the Ministry of Education)

#### Proof of Residential Address

Provide the latest copy (within the last 3 months) of any of the items below:

- Acceptance letter from school (restricted to official letters from educational institutions or schools under the purview of the Council for Private Education or Ministry of Education)

Click [here](#) to learn more



# Life in Singapore

## Opening Bank Account

### 2. Examples of banks in SG

**DBS**

Click [here](#) to learn more

**OCBC Bank**

Click [here](#) to learn more

### Important notes on opening bank account

- An overseas residential address is acceptable
- For international students staying in-campus, you can log into NTU One Stop Portal and request a Hall of Residence Letter.
- Before opening a bank account, students can top up their matric card, which can be used to make cashless payments at shops within and outside campus, and when taking public buses and MRT trains.



# Life in Singapore

## Phone Line

### STARHUB 4G Prepaid SIM

**\$15**

- \$15 credit for 180 days
- 180-day 8GB local data<sup>^</sup>
- 180-day FREE WeChat, Whatsapp & LINE usage
- FREE 120GB local data, \$100 IDD 018 credit, 5000 mins local calls, 200 local SMS for 28 days

Physically at StarHub Shops & Exclusive Partner outlets, Authorized Retailers, 7-Eleven & Cheers convenience stores

Click [here](#) to learn more

### SINGTEL HI! Prepaid SIM

**\$15**

- \$15 credit for 120 days
- 8GB (3GB for 120 days, 5GB for 30 days)
- Extra 100GB for 28 days
- FREE 30-day Viu Premium & Banglax
- Valid for 120 days (top up to extend validity by 180 days)

- a) Online self-registration
- b) Physical store

Click [here](#) to learn more

### Essential items needed to purchase SIM card

Identification Document:

- Provide a valid Passport (biodata)
- Provide a valid Student Pass to purchase Postpaid SIM

### M1 Prepaid SIM

**\$12**

- 56GB for 28days (2GB per day)
- 5000 mins Local Outgoing Calls, 400 Local SMS, Unlimited Incoming Calls for 28 days
- Top up \$24 each month to get the same benefits

- a) Purchased at M1 shops & M1 Authorised Retailers
- b) Online self-registration

Click [here](#) to learn more

<sup>^</sup>1.2GB from the first month and 200MB per month for the next 5 months, plus 6GB for first 30 days.

Promotion is valid until further notice.

\*Notes: Students can visit HOLA Mobile Pitstop located in NTU North Spine to purchase SIM card.



**INTEGRATION**  
Student Integration Committee@ntusu

**ntusu**  
VOICE • SERVICE • VIBRANCY



# Life in Singapore

*Documents to bring  
with you to Singapore*

**1. Offer letter + Original supporting documents (transcripts/ results slips)**

**2. ID verification  
(Passport/ National Identity Card)**

**3. IPA letter (your single-entry visa)**



**INTEGRATION**  
Student Integration Committee@ntusu

**ntusu**  
VOICE • SERVICE • VIBRANCY

# Hall Life

## Hall Check-in



- Hall check-in is strictly by appointment only
- Monday-Friday from 9 am to 4:30 pm

### Students can...

- Book an appointment in advance using NTU email account
- Authorise proxy (family/friend) to collect room key on behalf of you during appointment time

Q

A

## Need to check in on Saturday/Sunday/Public Holiday?

→ Write an email to Hall Admin Office for assistance at least 2 working days in advance!

- Request for a hall buddy to collect your room keys on your behalf
- Arrangements will be made to hand your room keys to hall buddy, and eventually to you
- Can subsequently proceed in person to Hall Admin Office to complete the check-in process on the next work day after you have checked into your room

**Click [here](#) for more information on hall check-in!**



**INTEGRATION**  
Student Integration Committee@ntusu

**ntusu**  
VOICE • SERVICE • VIBRANCY

# Hall Life

## Hall Facilities

### In each hall, there are...

- Lounges
- Reading rooms
- Computer rooms
- Pantries
- Laundry rooms
- Iron and ironing board

### In each room, there are...

- Study table and chair
- Wardrobe
- Cupboards / shelves
- Drawers
- Bed
- Ceiling fan





# Hall Life

*What to bring? &  
Where to buy?*

## What you need?

- Bedding sets: bedsheets, duvet, pillow
- Toiletries: shampoo, soap, toothbrush, toothpaste, etc.
- Personal belongings: cash, medication, clothes
- Electronic devices: mobile phone, laptop, wifi router with Cat6 Ethernet cable, chargers



## Where can you buy what you need?

### In campus

- Prime Supermarket
- Booklink
- Giant
- 7-Eleven

### Outside of campus

- **Jurong Point**
  - Fairprice
  - Challenger
- **Jurong East** (Jem, Westgate)
  - IKEA

### Online

- Shopee
- Fairprice
- Popular
- Giant
- Challenger



# School Life

*Academic  
Matters*

## Student Intranet

You can access internal information that you may frequently look for through Student Intranet. To access the information, you should either be on the campus network or login to the network.

### What can you access on Student Intranet?

- Degree Audit
- Minor Declaration and Filing
- STARS, Course Content / Class Schedule
- Exam seating arrangement, Exam results
- Heartland shuttle service



[Here](#) is the link to the Student Intranet!



**INTEGRATION**  
Student Integration Committee@ntusu

**ntusu**  
VOICE • SERVICE • VIBRANCY

# School Life

## Non-Academic Matters

### Co-curricular activities (CCAs)

#### Students' Union

Being the largest student organisation in NTU, The Nanyang Technological University Students' Union (NTUSU) provides services, facilities, and representation.

#### Academic Constituent Clubs

Academic Constituent Clubs organize aims to promote student work-life balance, as well as liaise with their respective administrations on academic matters

#### Big 3 Clubs

Big 3 Clubs refers to 3 non-academic constituent clubs that are a part of the Union: Cultural Activities Club, Sports Club, and Welfare Services Club. They focus on the non-academic development of the members, and interactions between students

#### Non-constituent Clubs

Non-Constituent Clubs helps NTU students to experience new things as well as pursue their interests. There are a variety of clubs such as Animal Welfare, Businesses, Community Service, and more!

You can find more information on CCAs [here!](#)



**INTEGRATION**  
Student Integration Committee@ntusu

**ntusu**  
VOICE • SERVICE • VIBRANCY

# School Life

## Non-Academic Matters

### School Facilities ([Explore NTU here](#))



#### Places to Study

- Lee Wee Nam Library
- The ARC
- The Hive
- Starbucks @ North Spine
- Student Activities Centre (SAC) @ North Spine
- Global Lounge
- NIE Library



#### Places to Eat

- A Hot Hideout
- Connect 71
- McDonald's
- Subway
- Food Courts at halls
- Zitimama's
- Koufu
- KFC
- Pizza Hut
- ... and many more!



#### Places to Exercise

- Campus Clubhouse
- Sports & Recreation Centre (SRC)
- The Wave
- Gyms at halls



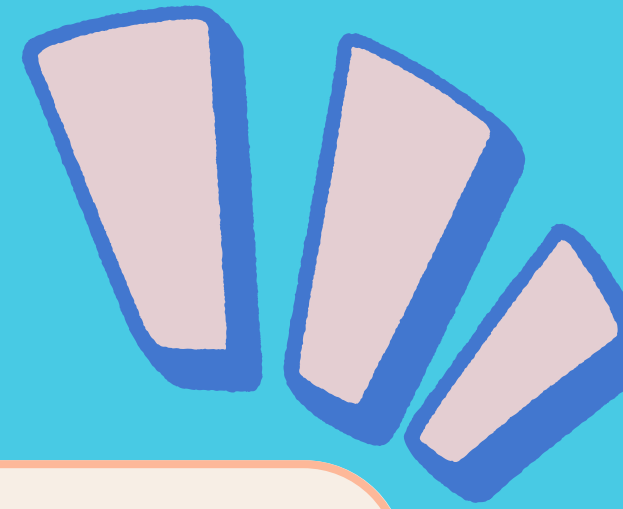
Click [here](#) for the recent video created by NTUSU on food exploration at NTU!





# School Life

*Useful  
Apps*



## NTU Omnibus

- Available for both iOS and Android
- Provides real-time shuttle bus info and campus map



## uWave

- Available for both iOS and Android
- Community-based social app
- You can link your timetable and check it in weekly manner



## Blackboard Learn

- Available for both iOS and Android
- You can access Blackboard Learn (NTULearn) on your phone and check..
  - Updates to your course & content
  - Take assignments and tests
  - View grades for courses, assignments, and tests



**INTEGRATION**  
Student Integration Committee@ntusu

**ntusu**  
VOICE • SERVICE • VIBRANCY

# Events Calendar

*Click on each event to learn more!*

MON	TUE	WED	THU	FRI	SAT	SUN		
3	4	5	6	7	8	9		
10	11	12	13	14	SIC Virtual Tea 	16		
17	18	19	20	LKC Medicine Orientation 	22	23		
Chinese Medicine / CN Yang Scholars Programme / University Scholars Programme Orientation			Clubs' Orientation*					
LKC Medicine Orientation		26	27	28		29		30
24	25							
31								

# JULY

\*include orientations organized by Union Orientation Committee (UOC), Cultural Activities Club (CAC), Sports Club (SC), Welfare Services Club (WSC), NTU Fest



**INTEGRATION**  
Student Integration Committee@ntusu

**ntusu**  
VOICE • SERVICE • VIBRANCY

# Events Calendar

# August

MON	TUE	WED	THU	FRI	SAT	SUN
	Halls' Orientation				International Students' Briefing	Faculty Orientation
	1 	2	3	4	5	6 
Faculty Orientation*						
7 	8	9	10 	11	12	13
NTU Welcome Week		NTUFest		SIC Adjustment Programme		
Start of Semester						
14	15	16	17	18	19	20
21	22	23	24	25	26	27
28	29	30	31			

\*More details will be shared by NTU at a later date

